



# Studio

Balanced Flue with Thermostatic Remote Control



**IMPORTANT:**  
FOR EASY TO FOLLOW,  
STEP BY STEP VIDEO  
INSTRUCTIONS ON HOW TO  
OPERATE AND MAINTAIN YOUR  
GAZCO REMOTE SYSTEM GO TO  
[WWW.GAZCO.TV](http://WWW.GAZCO.TV)

## Instructions for Use

For use in NZ (New Zealand).

### IMPORTANT

**THE OUTER CASING, FRONT AND GLASS PANEL BECOME EXTREMELY HOT DURING OPERATION AND WILL RESULT IN SERIOUS INJURY AND BURNS IF TOUCHED. IT IS THEREFORE RECOMMENDED THAT A FIREGUARD IS USED IN THE PRESENCE OF YOUNG CHILDREN, THE ELDERLY OR INFIRM.**

This product contains a heat resistant glass panel. This panel should be checked during Installation and at each servicing interval. If any damage is observed on the front face of the glass panel (scratches, scores, cracks or other surface defects), the glass panel must be replaced and the appliance must not be used until a replacement is installed. Under no circumstances should the appliance be used if any damage is observed, the glass panel is removed or broken.

These Instructions must be left with the appliance for future reference and for consultation when servicing the appliance. Please make the customer aware of the correct operation of the appliance before leaving these instructions with them.

# Contents

## Studio Balanced Flue

Covering the following models:

STUDIO 1	STUDIO 2	STUDIO 3
8700BFCHECNZ	8701BFCHECNZ	8702BFCHECNZ
P8700BFCHECNZ	P8701BFCHECNZ	P8702BFCHECNZ
8700BFLECNZ	8701BFLECNZ	8702BFLECNZ
P8700BFLECNZ	P8701BFLECNZ	-

## Welcome

*Congratulations on purchasing your Studio fire, if installed correctly Gazco hope it will give you many years of warmth and pleasure for which it was designed.*

*The purpose of this manual is to familiarise you with your appliance and give guidelines for its installation, operation and maintenance. If, after reading, you need further information, please do not hesitate to contact your Gazco retailer.*

<b>User Instructions.....</b>	<b>3</b>
General.....	3
Control Options .....	4
Changing the Appliance Batteries .....	7
Cleaning the Appliance.....	7
Arrangement of the Fuel Bed .....	8
Log Layout.....	9
Flame Failure Device .....	13
Running In .....	13
Servicing .....	14
Ventilation .....	14
Installation Details .....	14
Hot Surfaces.....	14
Appliance Will Not Light .....	14
Abnormal Operation .....	14

## WARRANTY

For the length, terms and conditions of the product warranty available in your region please consult your Gazco retailer.

# User Instructions

## 1. General

- 1.1 Installation and servicing must only be carried out by an authorised person.
- 1.2 In all correspondence, please quote the appliance type and serial number, which can be found on the data badge located on a plate under the Main Burner or on the Commissioning Check sheet.
- 1.3 **Do not** place curtains above the appliance:  
You must have 300mm (1') clearance between the appliance and any curtains at either side.
- 1.4 No furnishings or other objects should be placed within 1 metre of the front of the appliance.
- 1.5 If a shelf is fitted, a distance of 400mm above the appliance is required.
- 1.6 If any cracks appear in the glass panel do not use the appliance until the panel has been replaced.
- 1.7 Do not obstruct the flue terminal in any way, i.e. by planting flowers, trees, shrubs etc. in the near vicinity, or by leaning objects against the terminal guard.
- 1.8 Do not put any objects on the terminal guard; it will lose its shape.
- 1.9 If you use a garden sprinkler, do not let quantities of water into the flue terminal.
- 1.10 This appliance is designed to operate with luminous flames and slight carbon deposits may be experienced.
- 1.11 This product is guaranteed from the date of installation, as set out in the terms and conditions of sale between Gazco and your local Gazco retailer. Please consult with your local Gazco retailer if you have any questions. In all correspondence always quote the Model Number and Serial Number.



**IMPORTANT : NEVER position a television or screen above this appliance.**

## WARNING



**In the event of a gas escape or if you can smell gas, please take the following steps:**

- Immediately turn off the gas supply at the meter/emergency control valve
- Extinguish all sources of ignition
- Do not smoke
- Do not operate any electrical light or power switches (On or Off)
- Ventilate the building(s) by opening doors and windows
- Ensure access to the premises can be made

**Please report the incident immediately to the National Gas Emergency Service Call Centre or Gas Supplier.**

**The gas supply must not be used until remedial action has been taken to correct the defect and the installation has been recommissioned by a competent person.**



**DO NOT OPERATE THIS APPLIANCE BEFORE READING THE INSTRUCTION BOOKLET.**

**DO NOT PLACE ARTICLES ON OR AGAINST THIS APPLIANCE.**

**DO NOT USE OR STORE FLAMMABLE MATERIALS NEAR THIS APPLIANCE.**

**DO NOT SPRAY AEROSOLS IN THE VICINITY OF THIS APPLIANCE WHILE IT IS IN OPERATION.**

**DO NOT OPERATE WITH PANELS, COVERS OR GUARDS REMOVED FROM THE APPLIANCE**

**DO NOT MODIFY THIS APPLIANCE.**

# User Instructions

## 2. Control Options

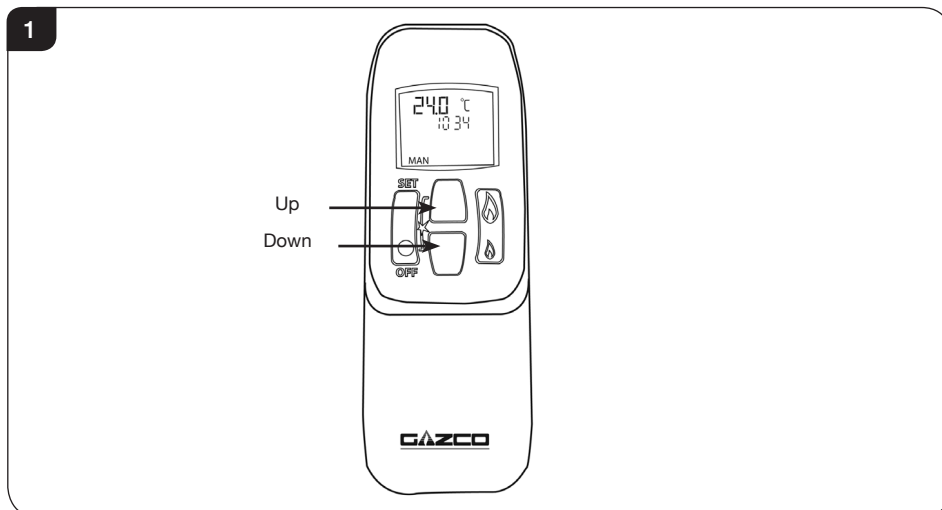
The appliance is operated by thermostatic remote control.

### 2.1 Turning the appliance On

Your remote can control the gas fire from pilot ignition through to shut down.

To turn the fire on press the OFF button and the UP button simultaneously. You hear several short signals.

**The pilot and main burner ignite and the remote is now in Manual Mode:**



**IMPORTANT: YELLOW FLAMES TYPICALLY APPEAR WHEN THE APPLIANCE HAS REACHED NORMAL OPERATING TEMPERATURE. THIS CAN TAKE UP TO 30 MINUTES.**



**WARNING: IF THE APPLIANCE FAILS TO LIGHT OR BECOMES EXTINGUISHED IN USE, WAIT 3 MINUTES BEFORE ATTEMPTING TO RELIGHT.**

2.2 There are 3 different modes available for controlling and operating the appliance:

1. Manual Mode
2. Temp Mode (Automatic)
3. Timer Mode (Automatic)

2.3 In **MANUAL MODE** you can:

- turn on the main burner using the UP button
- regulate the flame from high to low and back
- turn off the burner leaving just the pilot burning

In **TEMP MODE (Automatic)** you can:

- set the room temperature so the thermostat in the remote automatically maintains that temperature

In **TIMER MODE (Automatic)** the fire:

- turns on and off according to the set time periods
- automatically regulates the room temperature during the set periods



**NOTE: When operating the fire in Temp or Timer mode, the pilot remains lit and the fire then automatically switches on at programmed times to bring the room to the set temperature whether or not you are in the room.**

**NEVER LEAVE ANY COMBUSTIBLE MATERIALS WITHIN 1 METRE OF THE FRONT OF THE APPLIANCE.**

# User Instructions

## Switching Between Modes

- 2.4 Press the SET button to change to Temperature Mode.  
Press again to change to Timer Mode.  
Keep pressing to run through all operating modes. These are:
- MAN
  - DAY TEMP
  - NIGHT TEMP
  - TIMER
- and back to MAN

**NOTE: MAN mode can also be reached by pressing either the UP or DOWN button.**

## Manual Mode

- 2.5 Press the OFF button and the UP button simultaneously. You hear several clicks and audible beeps as the fire begins the ignition process, (up to 30 seconds).

### Turning the appliance Off:

Press the OFF button to turn the appliance off.


**FOR SAFETY, YOU MUST WAIT 30 SECONDS BEFORE LIGHTING THE FIRE AGAIN.**

### Increasing the Flame Height:

Press the UP button once to increase flame height one stage. Press and hold the UP button to increase to maximum.

### Decreasing the Flame Height:

Press the DOWN button once to decrease flame height one stage. Press and hold the DOWN button to decrease to minimum. At the lowest point the fire goes to 'Standby Mode' (Only Pilot lit).

 **NOTE: While pressing a button a symbol indicating transmission appears on the display. The receiver confirms transmission with a sound signal.**

## Temp Mode (Automatic)

- 2.6 The display shows the current **room** temperature.

To increase or decrease the fire's output:

Press the SET button to select either the DAY TEMP or the NIGHT TEMP mode by briefly pressing the SET button.

Hold the SET button until the TEMP display flashes and then let go.

Set the desired temperature with the UP and DOWN arrows. (Minimum temperature 5C, maximum 40C or 40F to 99F when Fahrenheit is the preferred option).

Press the OFF button to stop the display flashing or wait to return to TEMP mode.

 **NOTE: If you set a temperature that is beneath the current room temperature, the fire automatically switches to PILOT (Stand by).**

**If you would like the Night temperature control to turn off then decrease the temperature until [--] is displayed.**

# User Instructions

## Timer Mode (Automatic)

- 2.7 There are two programmable settings you can make over a 24 hour period, P1 and P2. These are normally used to provide an early morning and evening setting for each working week:

- P1 + ● = Start Timed Setting 1
- P1 + ⤵ = End of Timed Setting 1
- P2 + ● = Start Timed Setting 2
- P2 + ⤵ = End of Timed Setting 2

### 2.8 P1 - Program 1 for a Timed Setting

Press the SET button until the TIMER mode is displayed.

Hold the SET button. The display flashes the current time for P1.

**While the time displayed is flashing you can alter the hours and minutes set.**

To set the time your fire first lights, change P1 ●

- Press the UP button to alter the hour.
- Press the DOWN button to alter the minutes in 10 minute increments.

Press SET again to move to the end setting for P1 ⤵ This is the time your Studio first shuts down:

- Press the UP button to alter the hour.
- Press the DOWN button to alter the minutes.

### 2.9 P2 - Program 2 for a Timed Setting

Use the same steps outlined in 2.8 to change the setting for P2.

If you have already set P1 and want to alter the setting for P2 only:

- Press the SET button until TIMER mode is displayed.
- Hold the SET button **until the display flashes the current time** for P1 ●.
- Press the SET button once again to scroll past the settings for P1 ● and P1.

With the time still flashing:

- Press the UP button to alter the hour.
- Press the DOWN button to alter the minutes.

Once all four times are set press the OFF button.

### 2.10 To view existing settings:

- Select Timer Mode.
- Press and briefly hold the SET button you see the start time for P1.
- Repeat the above step for the start and end of each program.

### Low Battery

“BATT” is displayed on the remote when its batteries need replacement.

### Setting the time

Simultaneously press the up and down buttons.

Press the up button to set the hour and the down button to set the minutes.

Press OFF to return to the manual mode or simply wait.

### Setting the °C/24 Hour or °F/12 Hour clock

Press OFF and the down arrow until the display changes from °C/24 hour clock to °F/12 hour clock and vice versa.



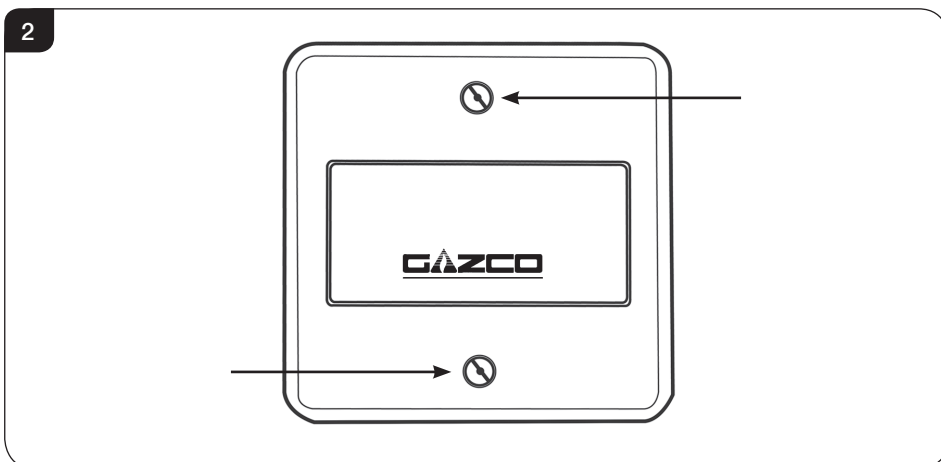
**If the remote is removed, lost or damaged, signals transmitted to the receiver cease. Your fire will go to standby (pilot) mode after 6 hours.**

# User Instructions

## 3. Changing the appliance batteries

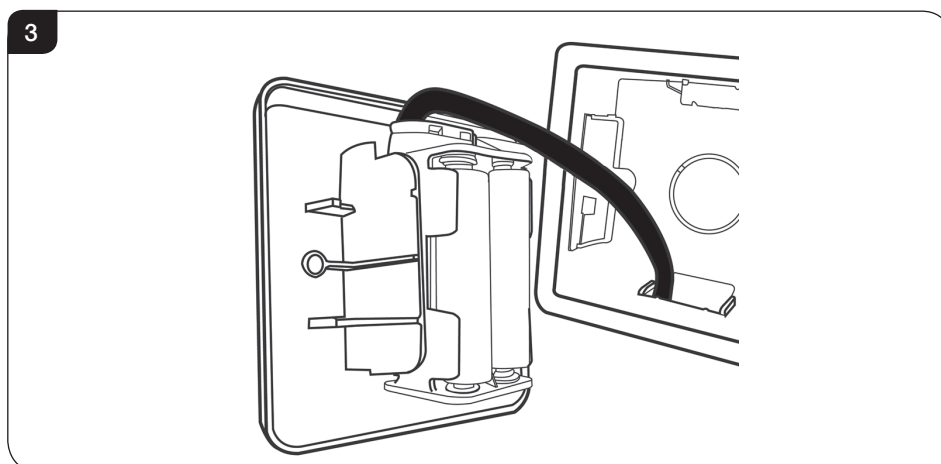
The appliance batteries are located behind the wall plate.

- 3.1 Undo the two screws securing the wall plate and remove, see Diagram 2.



- 3.2 Unclip the battery holder from the wall plate and remove the old batteries.

- 3.3 Correctly position the four new AA size batteries into the battery holder. Re-assemble the battery holder as shown in Diagram 3.



**PLEASE ENSURE NO WIRES ARE TRAPPED BEFORE REPLACING THE WALL PLATE. THE LEAD IS EASILY DAMAGED.**

## 4. Cleaning the Appliance

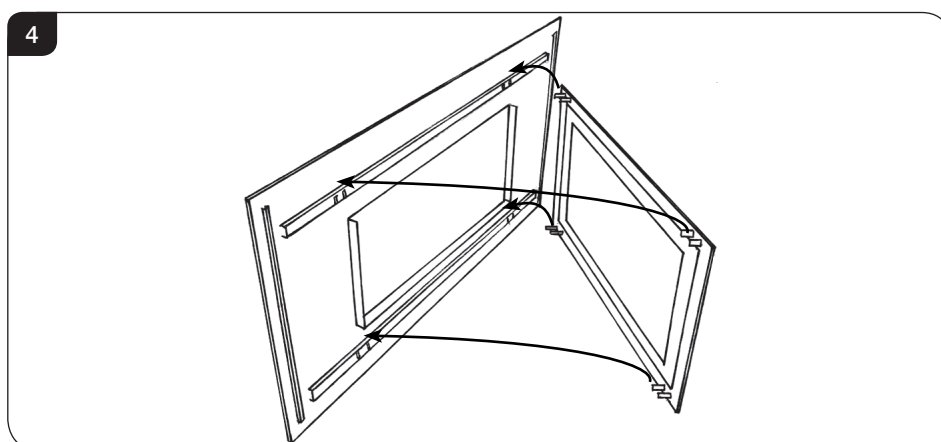
- 4.1 Make sure the appliance and surrounds are cool before cleaning.
- 4.2 Use:
- A damp cloth for the painted frame.
  - A damp cloth to clean the granite/ enamelled inner panels.
  - Soap and water to clean the glass.

### Opening the Glass Window:

- 4.3 **Steel, Verve or Glass Frame**

If fitted with a Steel, Verve or Glass Frame, this needs to be removed first:

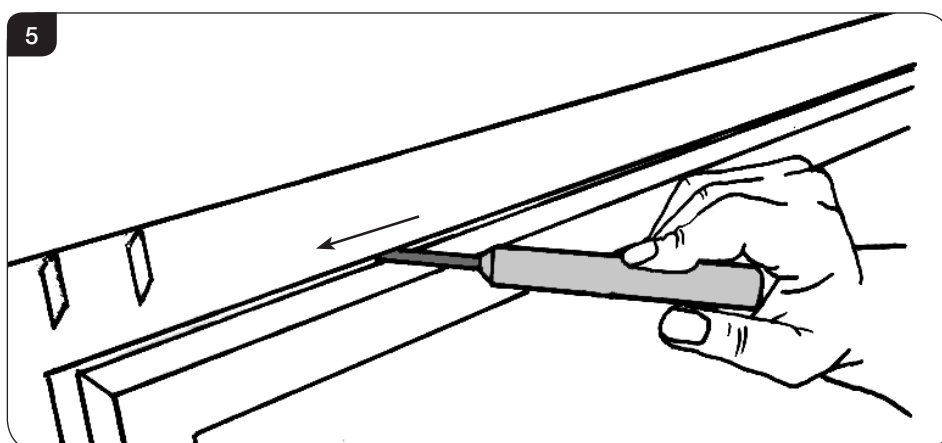
- 4.4 Lift the frame upwards off its four support brackets, see Diagram 4.



# User Instructions

## All models

- 4.5 Using the hexagon key provided release the window locks at the top of the glass door, see Diagram 5.
- 4.6 The locks move from shut to open towards the outer edges of the glass door, see Diagram 5.
- 4.7 Support the door and let it fall gently forward.
- 4.8 Open it down to its stop position.
- 4.9 **When closing the door ensure the door catches are fully engaged.**



**UNDER NO CIRCUMSTANCES SHOULD THE APPLIANCE BE USED WITHOUT THE CATCHES HOLDING THE DOOR IN PLACE.**

## 5. Arrangement of the fuel bed

### Advice on handling and disposal of fire ceramics



The fuel effect of the log version of this appliance is made from Refractory Ceramic Fibre (RCF), a material which is commonly used for this application.

Protective clothing is not required when handling these articles, but we recommend you follow normal hygiene rules of not smoking, eating or drinking in the work area and always wash your hands before eating or drinking.

To ensure that the release of RCF fibres are kept to a minimum, during installation and servicing a HEPA filtered vacuum is recommended to remove any dust accumulated in and around the appliance before and after working on it. When servicing the appliance it is recommended that the replaced items are not broken up, but are sealed within heavy duty polythene bags and labelled as RCF waste.

RCF waste is classed as stable, non-reactive hazardous waste and may be disposed of at a licensed landfill site.

Excessive exposure to these materials may cause temporary irritation to eyes, skin and respiratory tract; wash hands thoroughly after handling the material.

- 5.1 **White Stone and Glass Fuel Effects:** To replace the white stone effect chippings or glass granules, make sure they are flattened so they are level with the rim of the tray.

It is important to wash the Stone Chippings or Glass Granules to remove any dust particles. Alternatively clean with a low pressure air hose.

- 5.2 **Vermiculite for Log Layout:** Use the entire bag of supplied Vermiculite.

**TAKE CARE NOT TO SPILL THE EFFECT INTO THE PILOT AREA.**

**STACK STONES/GLASS EFFECT IN FRONT OF THE PILOT SHIELD TO OBSCURE THE BLACK METAL SHIELD.**

**ONLY GENUINE GAZCO PARTS CAN BE USED IN THIS APPLIANCE.**



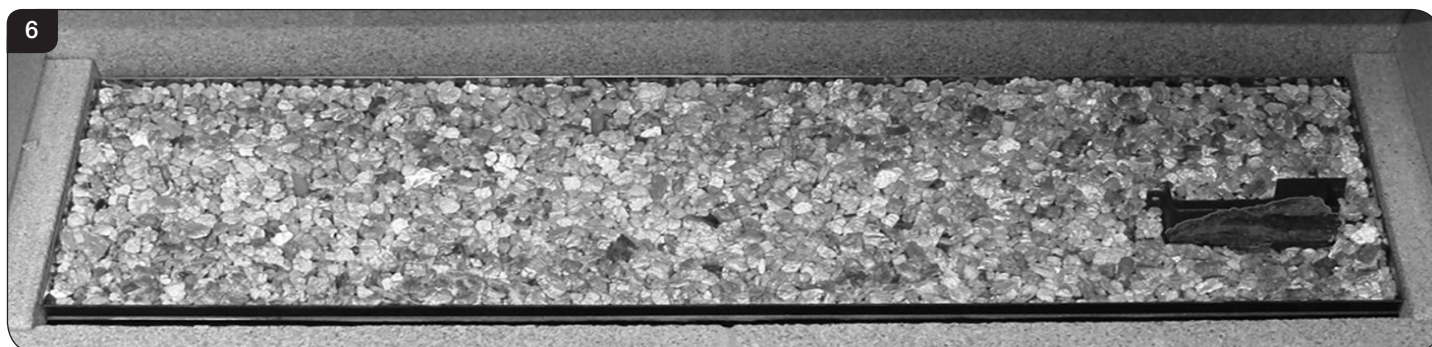
# User Instructions

## 6. Log Layout

**LOGS MUST BE POSITIONED ACCORDING TO THE FOLLOWING INSTRUCTIONS TO GIVE THE CORRECT FLAME EFFECT**

### Layout for Studio 1

- 6.1 Use all the vermiculite to fill the burner tray and spread evenly across the whole burner.
- 6.2 Rest the ceramic bark against the front face of the pilot shield, see Diagram 6.



All logs can be identified by a letter (A - H) on their underside. The first three logs, A, B and C, also have holes to locate each onto a burner stud.

- 6.3 Working from left to right place logs A, B and C onto their studs, see Diagram 7.

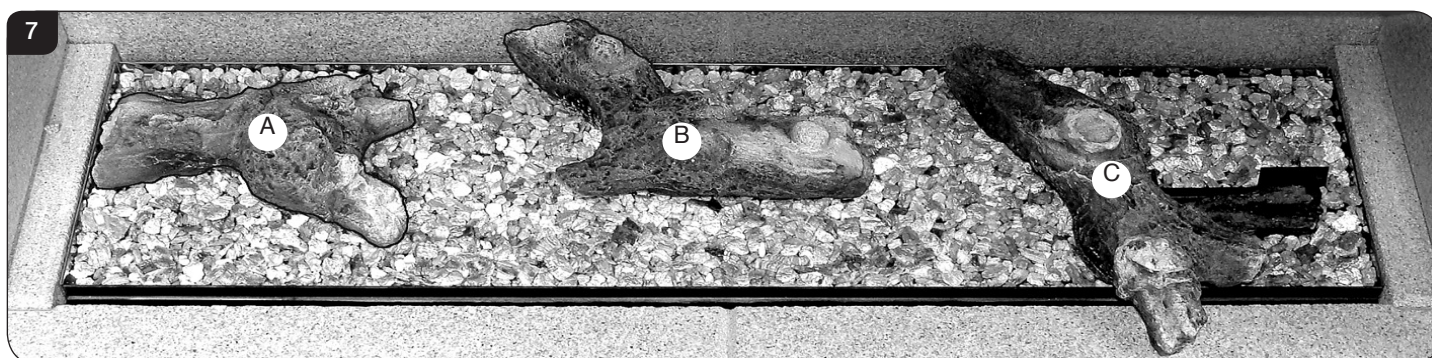
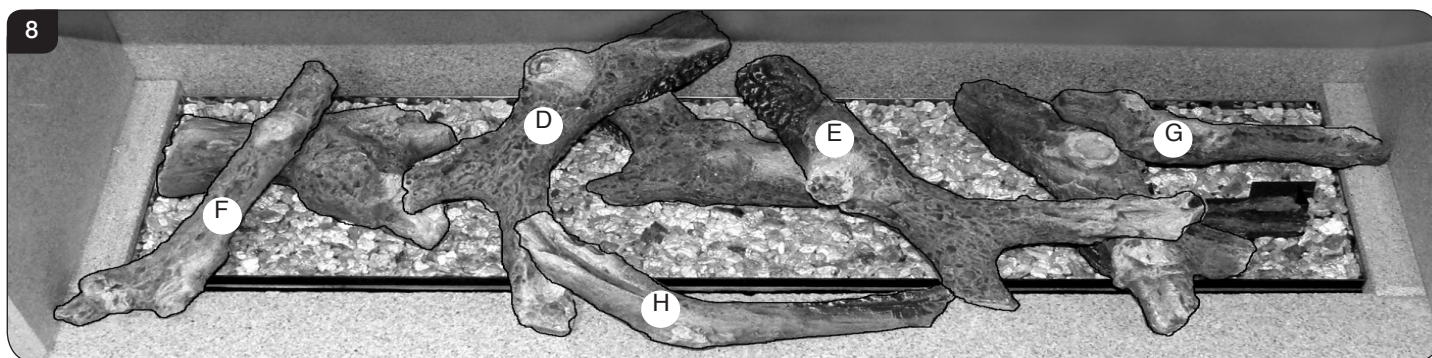


Diagram 8 shows the layout of logs D to H.

- 6.4 Log D has a recess on the underside to fit onto the stud of Log B at the back left. The small branch of the log rests on Log A.
- 6.5 A recess in the back of Log E fits the stud on Log B and its long branch rests snugly behind a wood knot of Log C.



# User Instructions

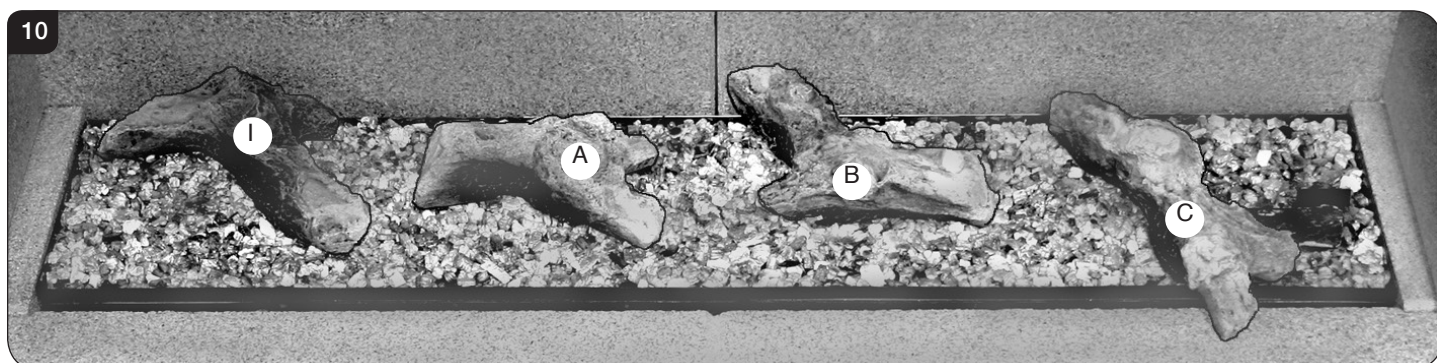
- 6.6 Log F fits centrally onto Log A with its front edge resting on the front panel.
- 6.7 Log G is centrally positioned around the moulded wood knot of Log C and rests against the right side panel crossing the pilot shield beneath.
- 6.8 The small branch underneath Log H rests on the front panel and overlaps Log D just touching Log E.
- 6.9 Separate the Embaglow material into smaller pieces and pull into shape to create a fine layer.
- 6.10 Place the pieces of Embaglow between the logs in the highlighted areas shown in Diagram 9. Ensure the material is placed loosely between the logs to create a random glow.



## Layout for Studio 2

- 6.11 Preparation of vermiculite and the ceramic bark pilot shield is the same as for Studio 1, see 6.1 and 6.2.  

All logs can be identified by the letters (A - J) on their underside. The first four logs, I, A, B and C also have holes to locate each onto a burner stud.
- 6.12 Place logs I, A, B and C onto their studs, see Diagram 10.





# User Instructions

Diagram 11 shows the layout of logs D, E and J.

- 6.13 Log D has a recess on the underside to fit onto the stud of Log B at the back left. The small branch of the log rests on Log A.
- 6.14 A recess in the back of Log E fits the stud on Log B and its long branch rests snugly behind a wood knot of Log C.
- 6.15 The underside of log J has a moulded 'stop'. This rests about 12mm in from the left edge of Log A. The left branch of Log J also rests in the recess in Log I, see Diagram 11.

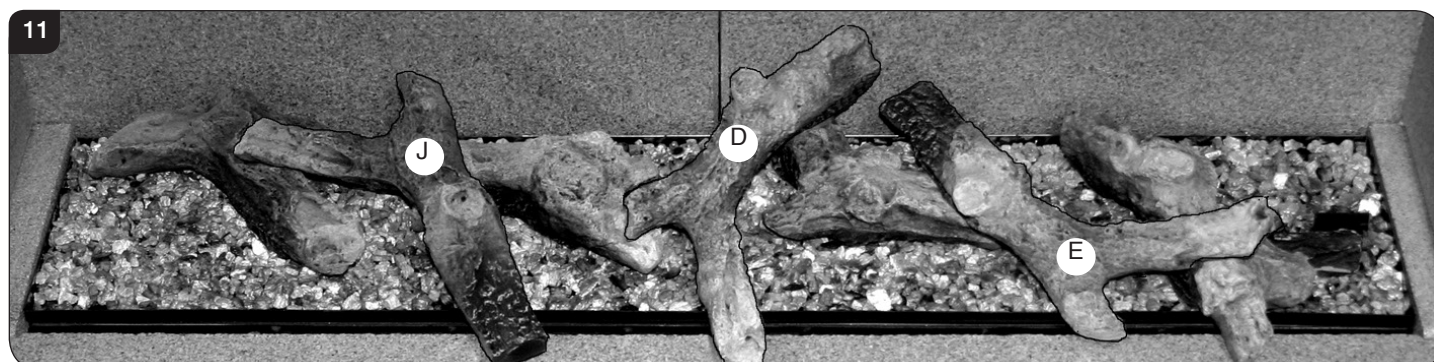
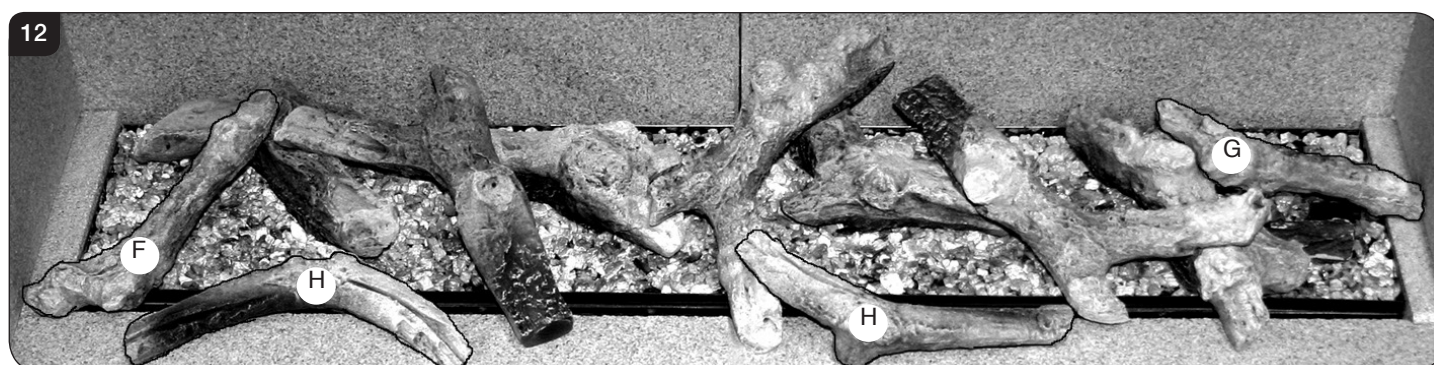


Diagram 12 shows the layout of the last four logs, F, G and two of log H:

- 6.16 Log F fits centrally onto Log I with its front edge resting on the front panel.
- 6.17 Log G is centrally positioned around the moulded wood knot of Log C and rests against the right side panel crossing the pilot shield beneath.
- 6.18 The first Log H rests on the front panel, overlapping Log D and touching Log E.
- 6.19 The second Log H rests anywhere on the front panel between F and J. **DO NOT LET THIS LOG OVERLAP THE BURNER.**



- 6.20 Separate the Embaglow material into smaller pieces and pull into shape to create a fine layer.
- 6.21 Place the pieces of Embaglow between the logs in the highlighted areas shown in Diagram 13. Ensure the material is placed loosely between the logs to create a random glow.





# User Instructions

## Layout for Studio 3

6.22 Use all the vermiculite to fill the burner tray and spread evenly across the whole burner.

6.23 Rest the ceramic bark against the front face of the pilot shield, see Diagram 14.

All logs can be identified by the letters (A - K) on their underside. The first five logs, K, I, A, B and C also have holes to locate each onto a burner stud.

6.24 Place logs K, I, A, B and C onto their studs as illustrated in Diagram 14.

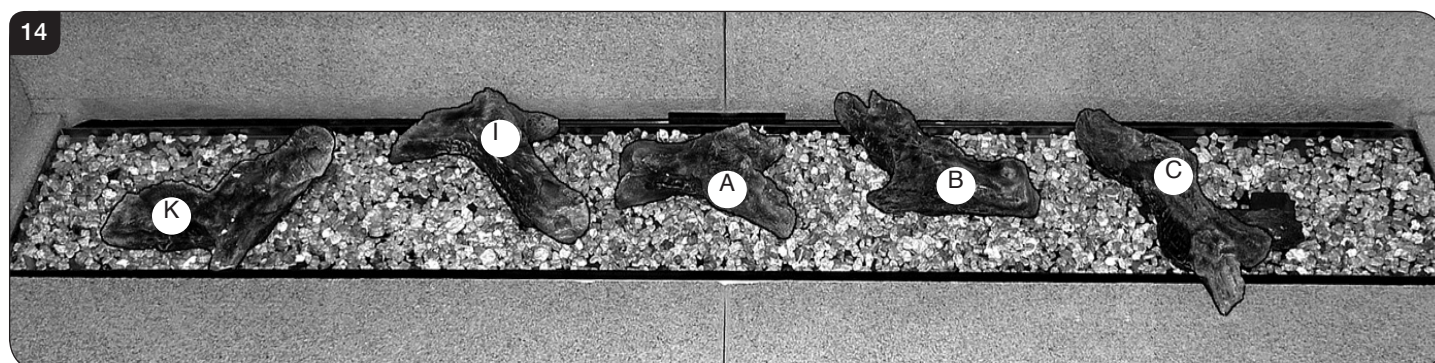
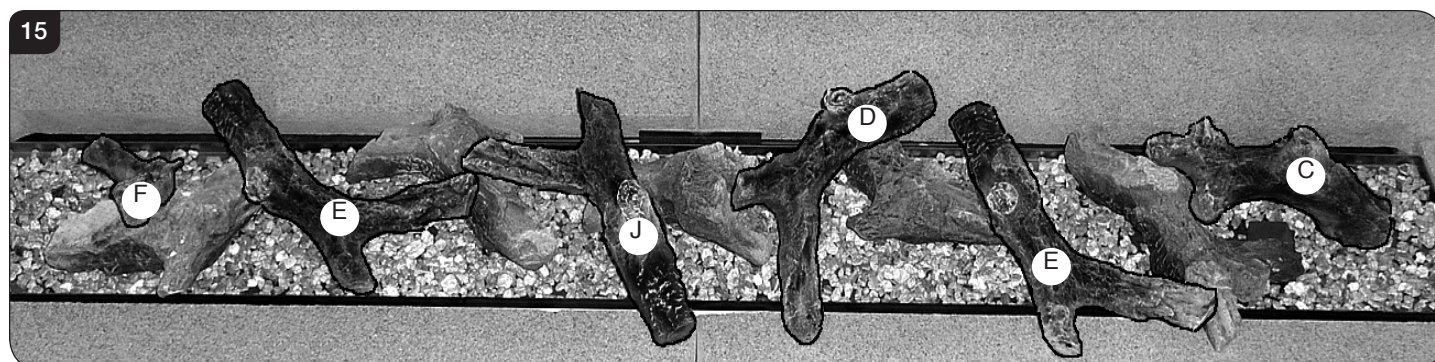


Diagram 15 shows the layout of logs F, E, J, D, E and C. Working from left to right:

6.25 Log F rests in an indent in Log K with the letter on the underside facing down and a top stud lying towards the back left of the burner tray.

6.26 Log E fits onto the stud on the back right of Log K. The right-hand branch rests against Log I, see Diagram 15.

6.27 The underside of log J has a moulded 'stop'. This rests about 12mm in from the left edge of Log A. The left branch of Log J rests in a recess in Log I, see Diagram 15.



6.28 Log D has a recess on the underside to fit onto the stud of Log B at the back left. The small branch of the log rests on Log A.

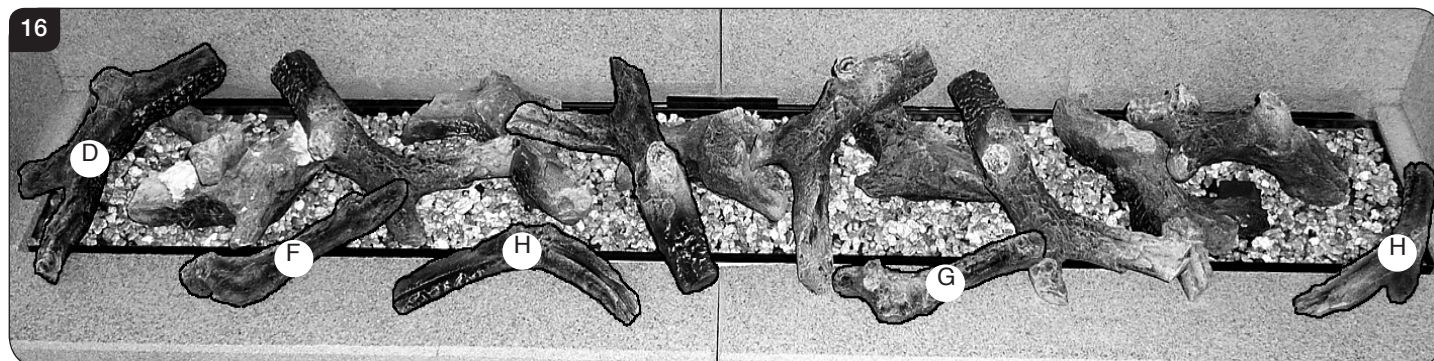
6.29 A recess in the back of Log E fits the stud on Log B and its long branch rests snugly behind a wood knot of Log C.

6.30 The fork of the branches of Log C rest around the wood knot of Log C beneath and cross the pilot shield below.

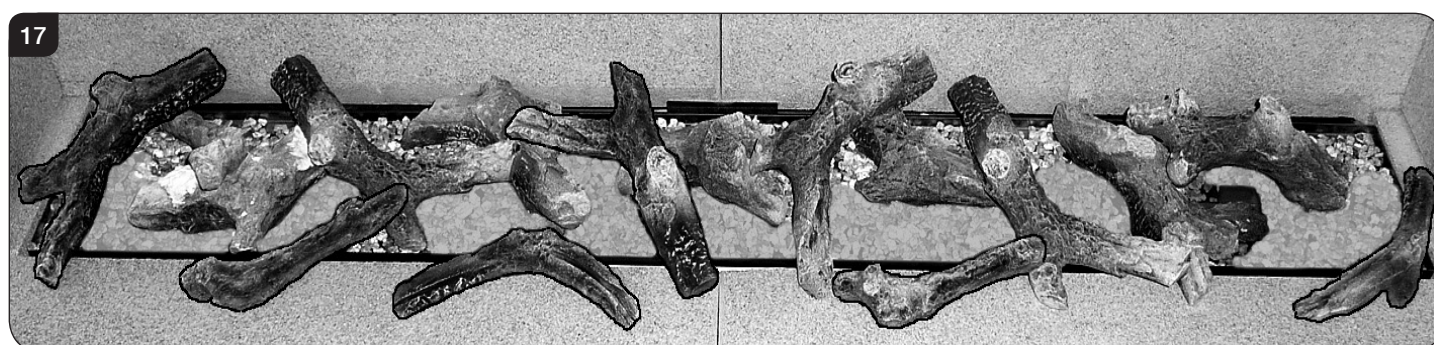
# User Instructions

Diagram 16 shows the layout of logs D, E, H, G, H. Working from left to right:

- 6.31 Log D's recess fits the stud at the back left of Log F. The branch must overlap the side and front edge panels, see Diagram 16.
- 6.32 Log F rests on a little notch on the lower branch of Log E and overlaps the front edge panel, see Diagram 16.



- 6.33 Log H rests anywhere on the front panel between F and J.
- 6.34 Log G rests against the lower branch of Log E, see Diagram 16.
- 6.35 The second Log H arches across the side and front panels. **DO NOT LET THIS LOG SIT ON THE BURNER TRAY.**
- 6.36 Separate the Embaglow material into smaller pieces and pull into shape to create a fine layer.
- 6.37 Place the pieces of Embaglow between the logs in the highlighted areas shown in Diagram 17. Ensure the material is placed loosely between the logs to create a random glow.



## 7. Flame Failure Device

- 7.1 This is a safety feature incorporated on this appliance which automatically switches off the gas supply if the pilot goes out and fails to heat the thermocouple.

**IF THIS OCCURS DO NOT ATTEMPT TO RELIGHT THE APPLIANCE FOR 3 MINUTES.**

## 8. Running In

- 8.1 During initial use of a new GAZCO appliance a strong odour will be encountered as various surface coatings become hot for the first time. Although these odours are harmless it is recommended that the appliance is operated on maximum for 4 to 8 hours in order to fully burn off these coatings. After this period the odours should then disappear.

If the odours persists, please contact your installer for advice.

- 8.2 During the first few hours of burning there may be discolouration of the flames. This will also disappear after a short period of use.



# User Instructions

## 9. Servicing

- 9.1 The appliance must be serviced every 12 months by a authorised person. In all correspondence always quote the Model number and the Serial number which may be found on the Commissioning Checklist (Page 3).

## 10. Ventilation

- 10.1 This appliance requires no additional ventilation.

## 11. Installation Details

- 11.1 The installer should have completed the commissioning sheet at the front of this book. This records the essential installation details of the appliance. In all correspondence always quote the Model number and Serial number.

## 12. Hot Surfaces

- 12.1 Parts of this appliance become hot during normal use.
- 12.2 Regard all parts of the appliance as a working surface.
- 12.3 Provide a suitable fire guard to protect young children and the infirm.

## 13. Appliance will not light

If you cannot light the Studio:

- 13.1 Check and change the batteries in the remote handset.
- 13.2 Check and change the appliance batteries (see Section 3).
- 13.3 Consult your Gazco retailer or installer if the Studio still does not light.

## 14. Abnormal Operation

- 14.1 If main burner does not light but pilot stays on, shut down the appliance and contact your dealer.
- 14.2 If excessive carbon on logs or glass contact your dealer for service.



Distributed by



The Fireplace  
0800 843 347 | 0800 The Fire  
[www.thefireplace.co.nz](http://www.thefireplace.co.nz)

Manufactured by

**Gazco Limited, Osprey Road, Sowton Industrial Estate, Exeter, Devon, England EX2 7JG**  
**Technical Customer Services (01392) 261950 Fax: (01392) 261951**  
**E-mail: [technicalservices@gazco.com](mailto:technicalservices@gazco.com)**

A member of the Stovax Group  
Adapted from English Issue 15

E & O E



PR2094