



Fire Your Imagination

Studio Duplex

Balanced Flue with Thermostatic Remote Control



IMPORTANT:
FOR EASY TO FOLLOW,
STEP BY STEP VIDEO
INSTRUCTIONS ON HOW TO
OPERATE AND MAINTAIN
YOUR GAZCO REMOTE
SYSTEM GO TO
WWW.GAZCO.TV

Instructions for Use, Installation & Servicing

For use in NZ (New Zealand).

IMPORTANT

THE OUTER CASING, FRONT AND GLASS PANELS BECOME EXTREMELY HOT DURING OPERATION AND WILL RESULT IN SERIOUS INJURY AND BURNS IF TOUCHED. IT IS THEREFORE RECOMMENDED THAT A FIREGUARD IS USED IN THE PRESENCE OF YOUNG CHILDREN, THE ELDERLY OR INFIRM.

This product contains Heat resistant glass panels. These panels should be checked during Installation and at each servicing interval. If any damage is observed on the front face of the glass panel (scratches, scores, cracks or other surface defects), the glass panel must be replaced and the appliance must not be used until a replacement is installed. Under no circumstances should the appliance be used if any damage is observed, the glass panels are removed or broken.

This appliance is guaranteed for 2 years (subject to the conditions on page 3 of this Instruction manual). The second year of the guarantee will only be valid if the annual service recommended in this Instruction manual has been completed by a suitably qualified engineer, and a copy of the service report is available for inspection by a Gazco engineer.

These Instructions must be left with the appliance for future reference and for consultation when servicing the appliance. Please make the customer aware of the correct operation of the appliance before leaving these instructions with them.

The commissioning sheet found on Page 3 of this Instruction manual must be completed by the Installer prior to leaving the premises.

Contents

Studio Duplex Balanced Flue

Covering the following models:

	Nat Gas	LPG
Log Effect	123-364NZ	123-411NZ

Appliance Commissioning Checklist3

User Instructions.....4

Installation Instructions14

Technical Specifications 14

Site Requirements..... 17

Installation20

Commissioning.....32

Servicing Instructions.....33

Fault Finding..... 33

How to Replace Parts 36

Basic Spare Parts List..... 42

Service Records43

Appliance Commissioning Checklist

To assist us in any guarantee claim please complete the following information:-

IMPORTANT NOTICE

Explain the operation of the appliance to the end user, hand the completed instructions to them for safe keeping, as the information will be required when making any guaranteed claims.

FLUE CHECK	PASS	FAIL
1. Flue Is correct for appliance		
2. Flue flow Test N/A		
3. Spillage Test n/a		
GAS CHECK		
1. Gas soundness & let by test		
2. Standing gas pressure	mb	
3. Appliance working pressure (on High Setting NB All other gas appliances must be operating on full	mb	
4. Gas rate	m ³ /h	
5. Does Ventilation meet appliance requirements N/A		

RETAILER AND INSTALLER INFORMATION

Retailer Contact No. Date of Purchase Model No. Serial No. Gas Type	Installation Company Engineer Contact No. Date of Installation
--	---

This product is guaranteed for 2 years from the date of installation, as set out in the terms and conditions of sale between Gazco and your local Gazco retailer. **This guarantee will be invalid, to the extent permitted by law, if the above Appliance Commissioning Checklist is not fully completed by the installer and available for inspection by a Gazco engineer.** The guarantee will only be valid during the second year, to the extent permitted by law, if the annual service recommended in the Instructions for Use has been completed by a suitably qualified engineer, and a copy of the service visit report is available for inspection by a Gazco engineer.

User Instructions

Welcome

Congratulations on purchasing your Studio fire, if installed correctly Gazco hope it will give you many years of warmth and pleasure for which it was designed.

The purpose of this manual is to familiarise you with your appliance, and give guidelines for its installation, operation and maintenance. If, after reading, you need further information, please do not hesitate to contact your Gazco retailer.

WARNING



In the event of a gas escape or if you can smell gas, please take the following steps:

- Immediately turn off the gas supply at the meter/emergency control valve
- Extinguish all sources of ignition
- Do not smoke
- Do not operate any electrical light or power switches (On or Off)
- Ventilate the building(s) by opening doors and windows
- Ensure access to the premises can be made

Please report the incident immediately to the National Gas Emergency Service Call Centre or Gas Supplier.

The gas supply must not be used until remedial action has been taken to correct the defect and the installation has been recommissioned by a competent person.

1. General

- 1.1 Installation and servicing must only be carried out by a competent person.
- 1.2 In all correspondence, please quote the appliance type and serial number, which can be found on the data badge located on a plate attached to the lower slotted trim.
- 1.3 **Do not** place curtains above the appliance: You must have 300mm (1') clearance between the appliance and any curtains at either side.
- 1.4 No furnishings or other objects should be placed within 1 metre of the front of the appliance.
- 1.5 If a shelf is fitted, a distance of 400mm above the appliance is required.
- 1.6 If any cracks appear in the glass panels do not use the appliance until the panels have been replaced.

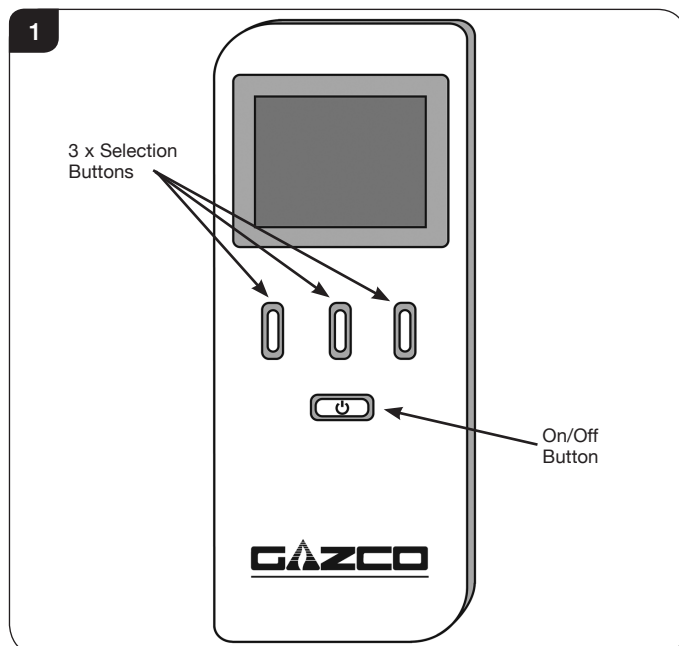
- 1.7 Do not obstruct the flue terminal in any way, i.e. by planting flowers, trees, shrubs etc. in the near vicinity, or by leaning objects against the terminal guard.
- 1.8 Do not put any objects on the terminal guard; it will lose its shape.
- 1.9 If you use a garden sprinkler, do not let quantities of water into the flue terminal.
- 1.10 In the unlikely event the appliance is receiving interference from other electronic devices, the handset/Control box can be reprogrammed. Please refer to the commissioning section in order to change the communication channel.
- 1.11 This product is guaranteed for 2 years from the date of installation, as set out in the terms and conditions of sale between Gazco and your local Gazco retailer. Please consult with your local Gazco retailer if you have any questions. In all correspondence always quote the Model Number and Serial Number.



IMPORTANT : NEVER position an LCD/Plasma TV above this appliance.

2. Operating the Appliance

- 2.1 The appliance has 4 flame settings:
 1. High.
 2. Medium.
 3. Low.
 4. Standby (Pilot only).
- 2.2 Both touch pad and handset allow you to manually switch between flame settings.
- 2.3 The Thermostatic handset also allows you to set the appliance to automatically regulate the room temperature.

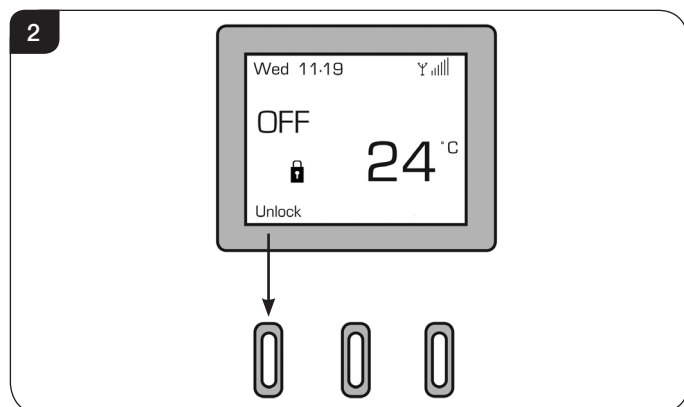


User Instructions

Before using the remote control:

- 2.4 If there is no display on the LCD screen press any key.
- 2.5 When first powered, the handset displays the OFF screen. The handset may be locked as indicated by the padlock symbol (🔒), see Diagram 2.

NOTE: To select a function from the options displayed at the bottom of the screen press the button directly below the desired function.



- 2.6 To unlock the handset select Unlock followed by OK - the symbol will change to an open padlock (🔓).
- 2.7 There are 3 different modes available for controlling and operating the appliance:
 1. Manual Mode
 2. Automatic Mode
 3. Program Mode

1. Manual Mode

Manual mode can be used to turn the appliance on or off and adjust the flame height. Gazco recommend using the handset in manual mode until familiar with operating the appliance.

Switching the Appliance ON:

- 2.8 Select On followed by OK. The appliance will emit a single beep and light on **pilot only**.

If the pilot fails to light, press the ON/OFF button to switch the appliance OFF. Wait for at least 30 seconds before attempting to relight.
- 2.9 Select Manual and the screen will highlight the current flame setting (Pilot).

Increasing the Flame Height:

- 2.10 To light the main burner press UP (↑). The screen will highlight the next flame setting (Low) and the main burner will light on the **low** setting.
- 2.11 From the **low** setting press UP (↑) once to increase the flame setting to **medium**.
- 2.12 From the **medium** setting press UP (↑) once to increase the flame setting to **high**.

Decreasing the Flame Height:

- 2.13 From the **high** setting press DOWN (↓) once to decrease the flame setting to **medium**. The screen will highlight the next flame setting (Med) and the main burner will change to the **medium** setting.
- 2.14 From the **medium** setting press DOWN (↓) once to decrease the flame setting to **low**.
- 2.15 From the **low** flame setting press DOWN (↓) once to put the appliance in **Standby** mode (Pilot only).

Switching the Appliance OFF:

- 2.16 To turn the appliance **OFF** press the ON/OFF button once, see Diagram 2.

Advanced Controls

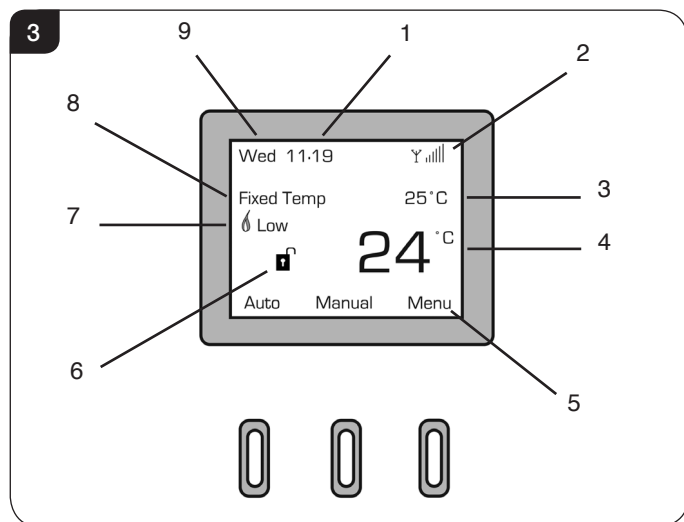
- 2.17 The thermostatic remote control handset has been pre-set as follows:
 - a) Thermostat mode - the appliance will alter automatically to achieve and maintain a desired room temperature in Auto (Fixed Temp) or Program mode.
 - b) Gap temperature set at 2°C - in Auto or Program mode the appliance will automatically ignite if the room temperature falls 2°C below the fixed temperature.
 - c) Program mode enabled - this allows one of three temperatures (Night temperature, Comfort temperature or Off) to be set for each hour of the day on a daily or weekly cycle.
 - d) Soft start enabled - in Auto or Program mode there is a 10 second delay between flame settings when more than one change of setting is required (i.e. from High to Low).
 - e) Sounder ON - the appliance will beep to confirm that it has received a command from the handset or touch pad.
 - f) Safety Temperature pre-set at 40°C - the appliance will automatically switch off if the room temperature (as displayed on the handset) exceeds 40°C.

NOTE: If the Safety Temperature is exceeded the appliance can not be turned on again until the room temperature has dropped below the safety temperature.

- 2.18 The LCD screen displays the following information, see Diagram 3:
 - 1) Time (24 hr clock)
 - 2) Signal strength (between handset and appliance)
 - 3) Selected Setting - set fixed temperature (in degrees) when in Auto mode (small number)
 - 4) Current room temperature (large number)
 - 5) Button function
 - 6) Child lock status (shown by open or closed padlock)

User Instructions

- 7) Current flame status (Low, Med, High)
- 8) Selected Mode - Manual Flame / Fixed Temp (Auto) / Program - when appliance is switched on
- 9) Day of the week (Mon - Sun)



2. Automatic Mode

Auto mode allows you to pre-set a room temperature. The appliance controls the flame setting automatically to achieve and maintain this temperature.

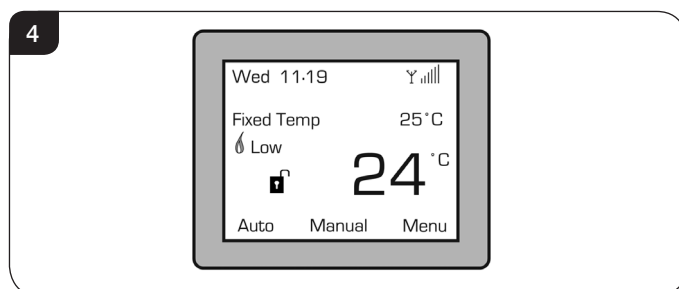
NOTE: WHEN IN AUTOMATIC MODE, THE PILOT REMAINS LIT AND THE MAIN BURNER AUTOMATICALLY ADJUSTS TO MAINTAIN THE FIXED TEMPERATURE WHETHER OR NOT ANYONE IS IN THE ROOM.

- 2.19 If the appliance is switched off, select On followed by OK. The appliance will emit a single beep and the pilot will light.
- 2.20 Select Auto. The screen will display the word 'Thermo' and the current fixed room temperature will be highlighted.
- 2.21 Use the buttons directly below the up (↑) or down (↓) symbols to select a temperature between 0°C and 37°C.

The flame setting required to achieve the desired room temperature will now be displayed below the word 'Thermo'.

- 2.22 The appliance will maintain the fixed temperature by automatically adjusting the flame height as follows:
 - a) If the room temperature falls 1°C below the fixed temperature the flame height will increase.
 - b) If the room temperature rises 1°C above the fixed temperature the flame height will decrease.
 - c) There will be a delay of 10 seconds between each flame setting adjustment.
- 2.23 Once the desired room temperature has been set, select Back to return to the main screen.

- 2.24 The screen will now display the words 'Fixed Temp', the chosen fixed temperature (e.g. 25°C) and the current room temperature (e.g. 24°C), see Diagram 4.



- 2.25 To change the fixed temperature at any time select Auto and follow 2.21.
- 2.26 To exit the Auto mode at any time select Manual and follow Section 2.10.
- 2.27 To turn off the appliance press the ON/OFF button once, see Diagram 1.

Setting the Display

Items displayed on the main screen, such as day and time, can be set using the Adjust Menu function.

- 2.28 To access the Adjust Menu function select Menu from the main screen.
- 2.29 Select Adjust Menu.
In this menu it is possible to set the:
 - Temperature Unit (°C/°F)
 - Language
 - Autolock (On/Off)
 - Day (Mon - Sun)
 - Hour (24hr clock)
 - Minute
 - Comfort temperature (for use when in Program mode)
 - Night temperature (for use when in Program mode)

Access can be gained to the programmable functions via the Change Prog option, see Program mode.

Setting the Day and Time:

- 2.30 Use (↓) to scroll down to Day and press Select.
Use (↑) and (↓) to set the day of the week.
- 2.31 Press Back and scroll down to Hour and select it.
Use (↑) and (↓) to set the hour.
- 2.32 Press Back and scroll down to Minute and press Select.
Use (↑) and (↓) to set the minutes.
- 2.33 The same process can be used to set any of the functions within this menu.

User Instructions

3. Program Mode

Program mode allows the appliance to be pre-set to a choice of temperature options on a daily or weekly cycle. The appliance will automatically switch on and off and control the flame setting to maintain pre-set hourly temperatures during each 24hr period.

NOTE: WHEN IN PROGRAM MODE, THE PILOT REMAINS LIT AND THE MAIN BURNER AUTOMATICALLY SWITCHES ON AT THE PROGRAMMED TIMES AND ADJUSTS THE FLAME HEIGHT TO BRING THE ROOM TO THE SET TEMPERATURE WHETHER OR NOT ANYONE IS IN THE ROOM.

Note: The current day and time must be set in order for the programmable functions to work. (See Section 2.30 for details).

2.34 There are two types of program mode:

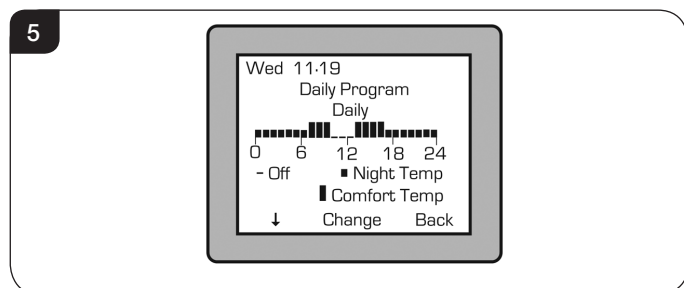
1. Daily - the temperature can be set for each hour over a 24hr period - This pattern is then repeated every day.
2. Weekly - the temperature can be set for each hour over a 24hr period for each individual day of the week (Mon - Sun). This pattern is then repeated every week.

2.35 One of 3 options can be chosen for each hour across a 24 hour period:

- Off - the appliance will remain in Standby mode (pilot only). **The appliance will not switch off completely when in Program mode.**
- Night Temp - the appliance will automatically maintain a pre-set night temperature.
- Comfort Temp - the appliance will automatically maintain a pre-set comfort temperature.

2.36 To set the Comfort and Night temperature select Menu. In the next screen select Adjust Menu. Using (↓) scroll to Comfort Temperature and select. Use (↑) and (↓) to set a chosen temperature. Repeat for Night Temperature.

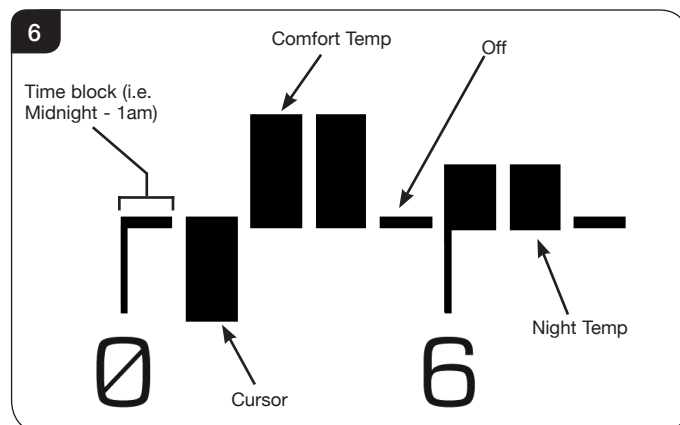
2.37 To access the programming screen select Menu. In the next screen select Adjust Menu. Using (↓) scroll to Change Prog and select. The programming screen will be displayed as shown, see Diagram 5.



Setting Daily Operating Times:

2.38 In the program menu highlight the word 'Daily'. Press (↓) to access the 24 hour timer below 'Daily'. The arrow should now point to the right (→).

2.39 The timer reads 0 - 24 with both 0 and 24 representing midnight. Press (→) to scroll through the 24 hour timer. With the cursor resting on the chosen hour, press Change until the desired setting for that hour (Comfort Temperature, Night Temperature or Off) is reached. Use (→) to scroll to the next hour and select the desired function for each hour until all 24 hours are set, see Diagram 6.



2.40 The program must now be launched. To do to this see Section 2.45.

Setting Weekly Operating Times:

2.41 Access the programming screen as detailed in Section 2.37. The word 'Daily' will be highlighted. Select 'Change' to scroll from 'Daily' to the required day of the week (Monday - Sunday).

2.42 Press (↓) to access the timer. Select the function settings for each hour of the chosen day as detailed in 2.39. Repeat for the rest of the week.

2.43 Once the programming is completed select Back to return to the main screen.

2.44 The program must now be launched. To do to this see 2.45.

Launching a Daily or Weekly Program:

2.45 Select Menu. In the next screen use (↓) to scroll to Program and confirm. Select Change until the highlighted text reads ON.

Note: The appliance must be ON (pilot lit or any flame setting) in order to launch the program.

2.46 Select Back and use (↓) to select Prog Type. Select Change until the desired program (Daily or Weekly) is highlighted. Select Back twice to return to the main screen.

To Switch Off Program Mode

2.47 To switch off the set program select Stop from the options on the main screen. The appliance will switch to Stand-by (pilot only). Alternatively select Auto; this will end the program cycle and return to the main screen. The appliance will automatically adjust the flame height to maintain any previously set Fixed Temperature.

User Instructions

Locking The Handset

- 2.48 To lock the handset Select Lock. If the option is not visible on the screen (i.e. when the appliance is lit) select Menu and scroll down to Lock. Press Select and use the Change function to scroll to Yes. The handset is now locked.

3. Replacing the Handset Batteries

- 3.1 **BEFORE USE:**
Ensure the remote handset contains 2 x AA 1.5v alkaline batteries (provided). Always replace the batteries with high quality batteries (Duracell or similar). **DO NOT USE RECHARGEABLE BATTERIES.**
- 3.2 Communication between the handset and the appliance may take up to 2 minutes after batteries have been replaced.
- 3.3 If communication is not regained after this time the control unit and the handset may need pairing. Please refer to Commissioning, Section 2, Pairing the Appliance.

4. Handset Troubleshooting



IMPORTANT - THE CONTROL SYSTEM HAS BEEN PROGRAMMED TO CHANNEL 'A'. SOME HOUSEHOLD APPLIANCES MAY HAVE ALSO BEEN SET TO OPERATE ON THE SAME FREQUENCY. ALTHOUGH THIS HAS NO EFFECT ON SAFETY OF THE SYSTEM AN EXCESSIVE DELAY MAY BE ENCOUNTERED BETWEEN COMMANDS. IF THIS OCCURS FOLLOW THE INSTRUCTIONS IN COMMISSIONING SECTION 3 TO CHANGE THE CHANNEL.

CHANNEL SETTINGS

- 4.1 The appliance has been factory set to only communicate with the handset it is supplied with. It will not respond to any other remote control, even one from an identical appliance.

A replacement handset will need to be paired with the appliance before use. Please refer to Commissioning, Section 2, Pairing the Appliance.

LOW BATTERY

- 4.2 If the batteries in the remote control handset become discharged the LCD display will show the message Low Battery.

Follow Section 3 - Replacing The Handset Batteries.

REMOTE SIGNAL STRENGTH



NOTE: If the handset is taken out of range the signal strength indicator will show 'Loss of Signal'. When the handset is returned to the appliance it will be necessary to press any button and wait for the signal indicator to recognise the handset. This can take up to 4 minutes

- 4.3 If the appliance does not respond to the handset, check the strength of the signal in the top right hand corner of the LCD display (Y|||).

No vertical bars next to the signal symbol (Y) means communication between the appliance and the handset has been lost. If the communication loss exceeds 18 minutes the appliance will emit 20 beeps and switch OFF. Try the following:

- 4.4 Move the handset closer to the appliance.
- 4.5 Replace the batteries in the handset, see Section 3.
- 4.6 If there is still no signal, operate the appliance using the touch pad control, see Section 5 and consult your installer or Gazco retailer.

5. Touch Pad Control

7



The touch pad control is located on the front of the wall switch and allows manual operation of the appliance, see Diagram 7.

With the touch pad it is possible to turn the appliance ON, OFF and control the flame setting.

NOTE: When using the touch pad buttons a beep will be emitted from the appliance to indicate an accepted command.

To Switch ON:

- 5.1 To turn the appliance ON press the ON/OFF button once. The ignition sequence will commence. This may take up to 20 seconds. The pilot will be lit once the start up sequence has completed.
- 5.2 If the pilot fails to light, press the ON/OFF button again to switch OFF. Wait for at least 30 seconds before attempting to switch on again.

To change the flame level:

- 5.3 With the Pilot lit the appliance is in Standby mode.
- 5.4 Press the Up button (↑). The main burner will be ignited on the Low flame setting.

User Instructions

- 5.5 Press the Up button (↑) again to increase the flame setting to the Medium position.
- 5.6 Press Up button (↑) once more to increase the flame setting to the High position.
- 5.7 To reduce the flame, press the Down Button (↓). At the lowest setting only the Pilot will be lit and the appliance will be in Standby mode.

To Switch OFF:

- 5.8 To turn the appliance OFF press the ON/OFF button. The pilot flame will be extinguished.

NOTE: Following main burner operation do not attempt to switch on the appliance again for at least 3 minutes.

TOUCH PAD CONTROL NOT WORKING

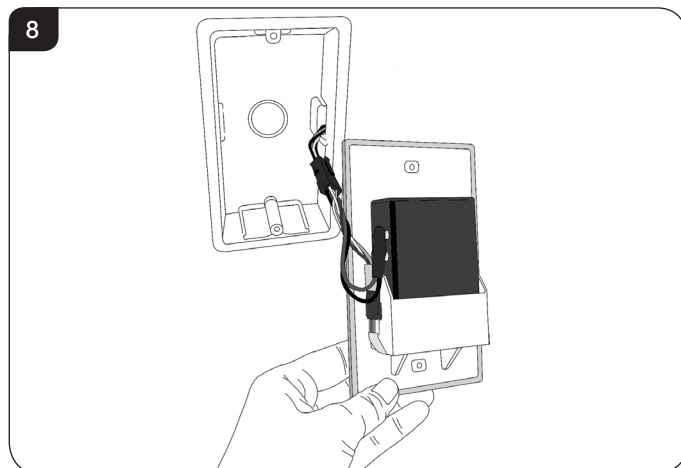
If the appliance is not operating with the touch pad control:

- 5.9 In accordance with Section 6, replace the batteries in the wall switch unit.
- 5.10 If the appliance still fails to operate consult your installer or Gazco retailer.

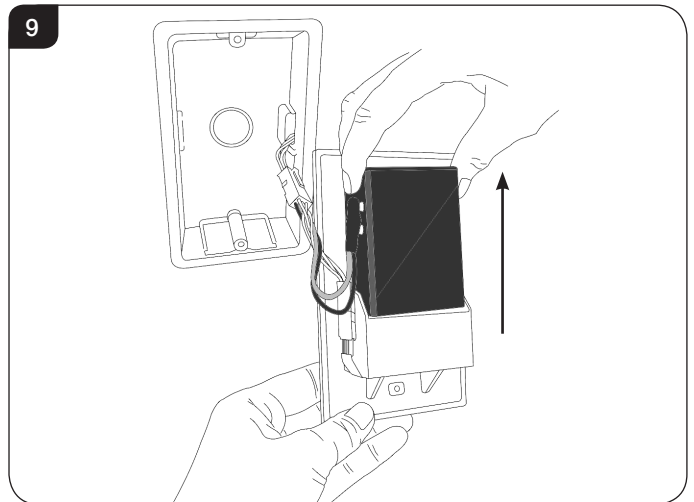
6. Changing the Studio Batteries

The appliance batteries are located behind the wall switch plate.

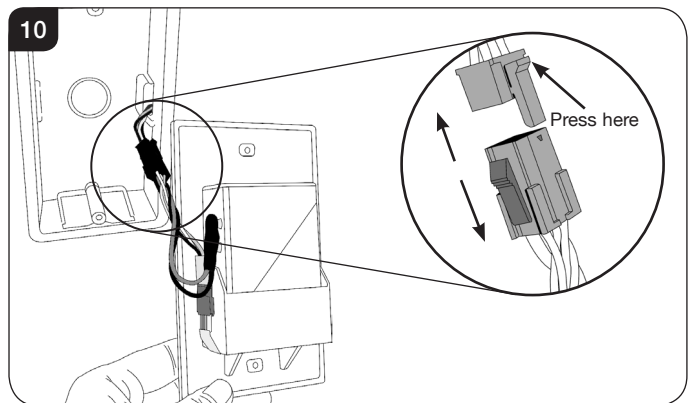
- 6.1 Undo the two screws securing the wall plate and gently bring it forward to expose the wires behind. Keep the wall plate supported, taking care not to put any strain on the wires, see Diagram 8.



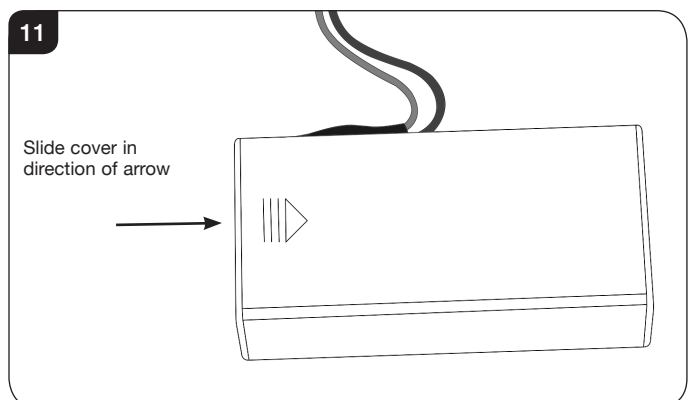
- 6.2 Whilst supporting the wall plate remove the battery holder from its location, see Diagram 9.



- 6.3 If it is not possible to support the wall plate and battery holder at the same time separate the wall plate from the dry lining box by disconnecting the plug as shown, see Diagram 10. Press the top of the clip on the upper section to release.

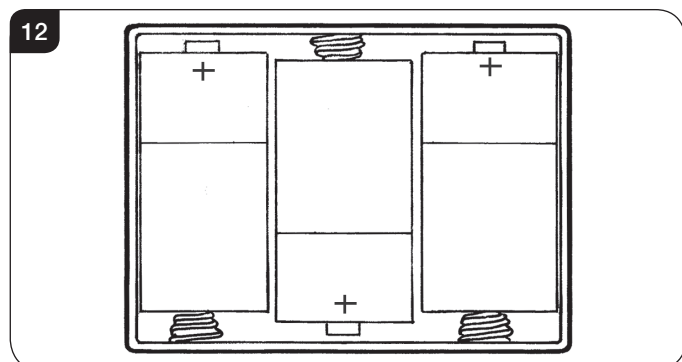


- 6.4 Flip the battery holder over end to end and remove the cover by sliding off in the direction of the arrow shown in Diagram 11.



User Instructions

- 6.5 Remove the old batteries and correctly position the three new high quality (Duracell or similar) size C / HR14 batteries into the battery holder, see Diagram 12.



- 6.6 Re-assemble in reverse.

PLEASE ENSURE NO WIRES ARE TRAPPED BEFORE REPLACING THE WALL PLATE. THE TOUCH PAD LEAD IS EASILY DAMAGED.

7. Cleaning the Studio

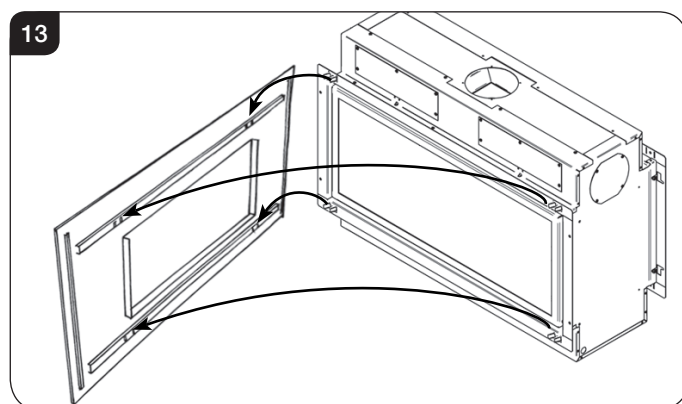
- 7.1 Make sure the appliance and surrounds are cool before cleaning.
- 7.2 Use:
- A damp cloth for the painted frame.
 - A damp cloth to clean the granite/enamelled inner panels.
 - Soap and water to clean the glass.

Opening the Glass Window:

7.3 Decorative Front

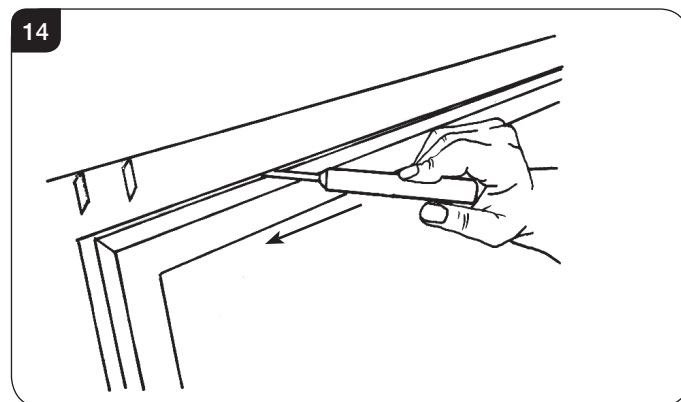
If fitted with a decorative front, this needs to be removed first:

- 7.4 Lift the frame upwards off its four support brackets, see Diagram 13.



All models

- 7.5 Using the hexagon key provided release the window locks at the top of the glass door (see Diagram 14).
- 7.6 The locks move from shut to open towards the outer edges of the glass door, see Diagram 14.



- 7.7 Support the door and let it fall gently forward.
- 7.8 Open it down to its stop position.
- 7.9 **When closing the door ensure the door catches are fully engaged.**

8. Arrangement of the fuel bed

Advice on handling and disposal of fire ceramics



The black reeded liners are made from Refractory Ceramic Fibre (RCF), a material which is commonly used for this application.

Protective clothing is not required when handling these articles, but we recommend you follow normal hygiene rules of not smoking, eating or drinking in the work area and always wash your hands before eating or drinking.

To ensure that the release of RCF fibres are kept to a minimum, during installation and servicing a HEPA filtered vacuum is recommended to remove any dust accumulated in and around the appliance before and after working on it. When servicing the appliance it is recommended that the replaced items are not broken up, but are sealed within heavy duty polythene bags and labelled as RCF waste.

RCF waste is classed as stable, non-reactive hazardous waste and may be disposed of at a licensed landfill site.

Excessive exposure to these materials may cause temporary irritation to eyes, skin and respiratory tract; wash hands thoroughly after handling the material.

User Instructions

- 8.1 **Vermiculite for Log Layout:** Use the entire bag of supplied Vermiculite.

TAKE CARE NOT TO SPILL THE VERMICULITE INTO THE PILOT AREA. ONLY USE THE FUEL EFFECT SUPPLIED BY GAZCO IN THIS APPLIANCE.

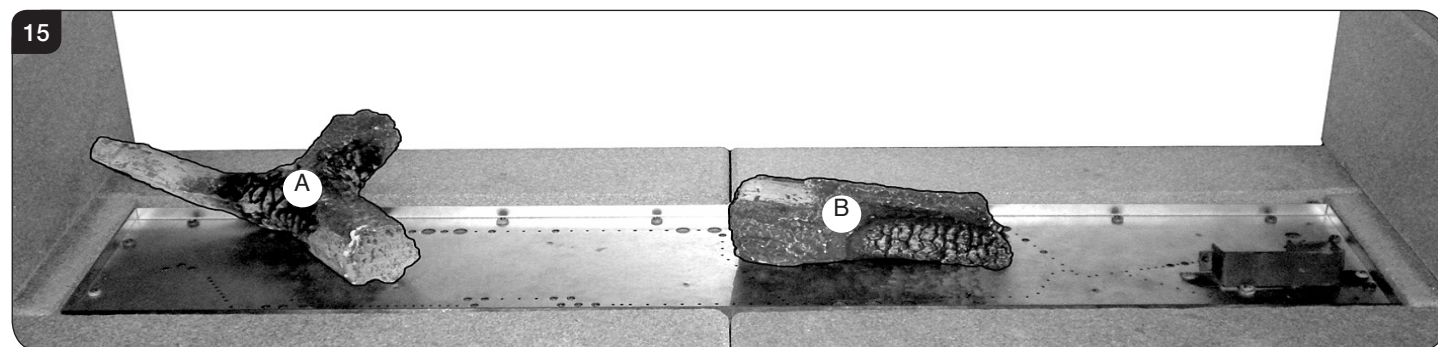
9. Log Layout

LOGS MUST BE POSITIONED ACCORDING TO THE FOLLOWING INSTRUCTIONS TO GIVE THE CORRECT FLAME EFFECT.

- 9.1 In order to install the correct log layout the pilot burner must be situated on the bottom right hand side of the appliance, see Diagram 15.

All logs can be identified by a letter (A - I) on their underside. The first 2 logs, A and B, also have holes to locate each onto a burner stud.

- 9.2 Working from left to right place logs A and B onto their studs on the burner tray, see Diagram 15.



- 9.3 Use all the vermiculite to fill the burner tray between Logs A and B. Spread evenly across between the logs, so the whole burner is covered, see Diagram 16.

Ensure not to drop vermiculite down the edges of the burner tray.

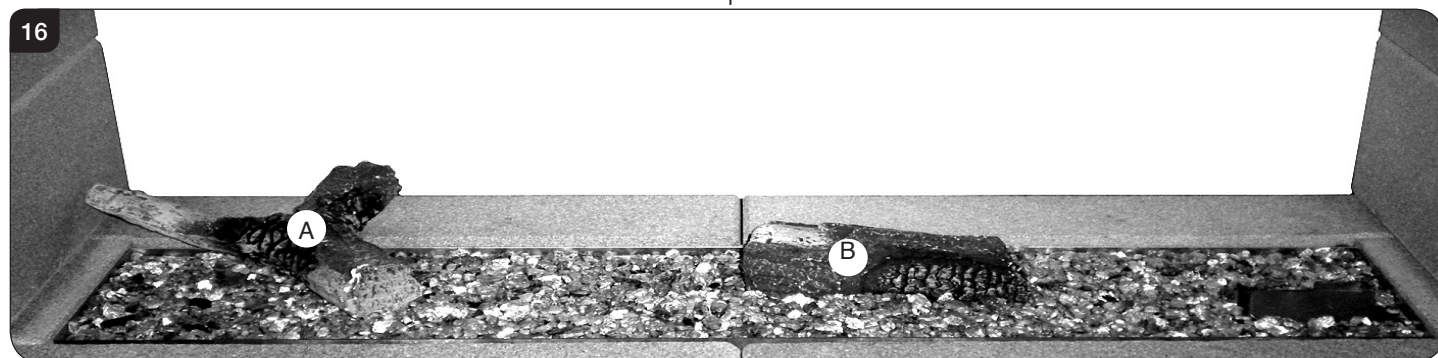
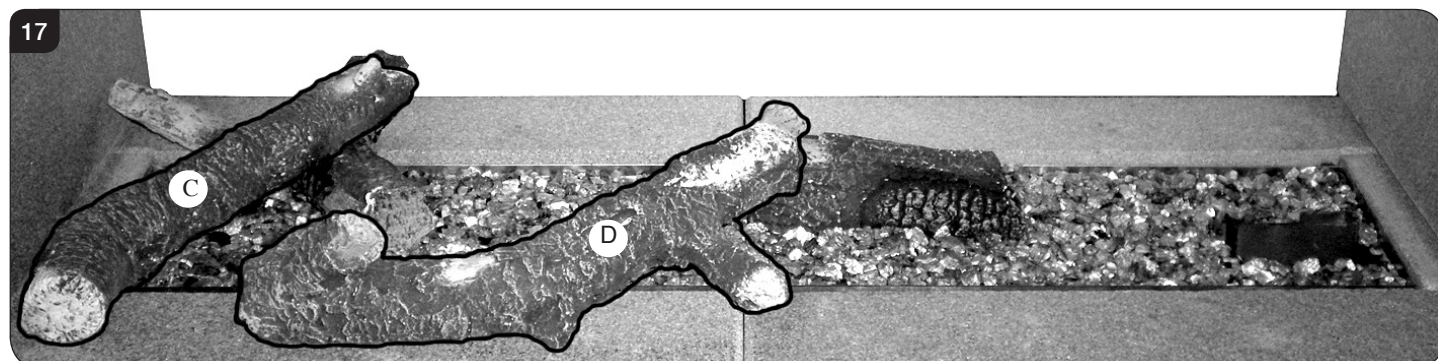


Diagram 17 shows the layout of logs C and D.

- 9.4 Place the front end of Log C on the front left panel and rest the rear end across Log A.

- 9.5 Place the front end of Log D along the front panel with the bend curving backwards with the rear end resting on Log B.



User Instructions

Diagram 18 shows the layout of logs E and F.

- 9.6 Place the back end of Log E on the back panel and rest the front end across Log D.

- 9.7 Place the front end of Log F onto the front right panel and rest the back end across Log B.

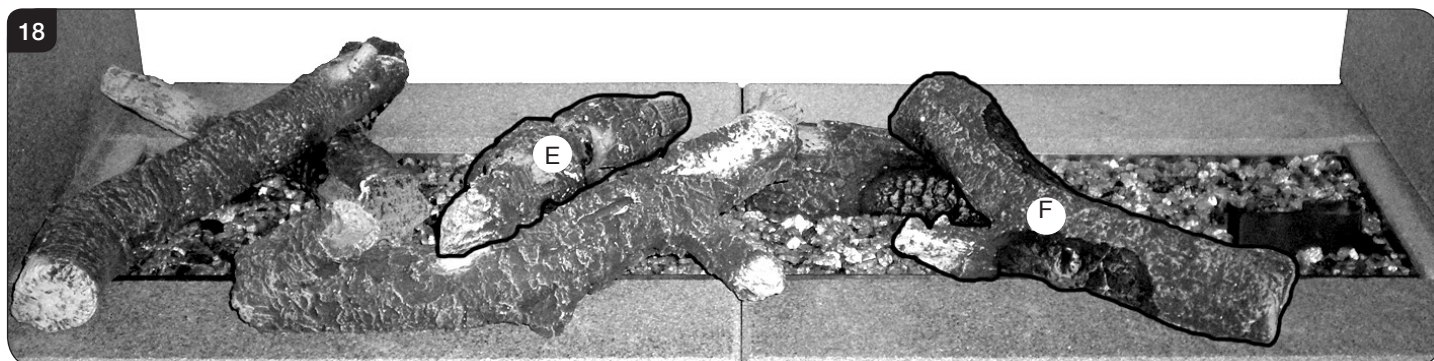


Diagram 19 shows the layout of log G.

- 9.8 Place the back end of Log G on the back right hand panel and rest the front end onto Log F.



Diagram 20 shows the layout of logs H and I.

- 9.9 Place the front end of Log H onto the front right panel and against the right side panel.

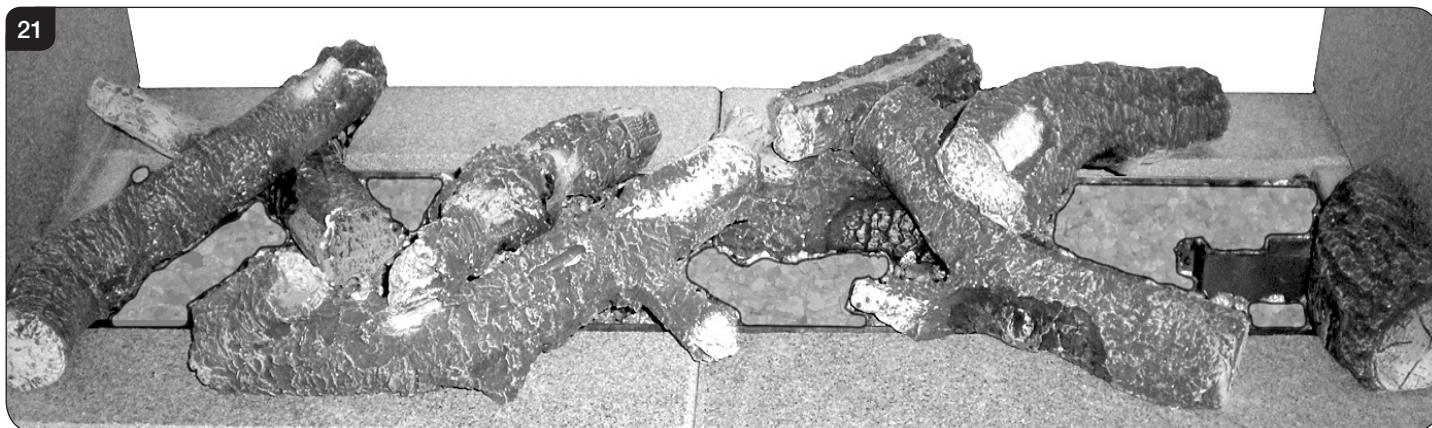
- 9.10 Place the back end of Log I on the back right hand panel and rest the front end onto Log B.



- 9.11 Separate the Embaglow material into smaller pieces and pull into shape to create a fine layer.

- 9.12 Place the pieces of Embaglow between the logs, in the highlighted area show in Diagram 21, to produce a random glow and ensure the final effect is achieved.

User Instructions



10. Flame Failure Device

- 10.1 This is a safety feature incorporated on this appliance which automatically switches off the gas supply if the pilot goes out and fails to heat the thermocouple.

IF THIS OCCURS DO NOT ATTEMPT TO RELIGHT THE APPLIANCE FOR 3 MINUTES.

11. Running In

- 11.1 During initial use of a new GAZCO appliance a strong odour will be encountered as various surface coatings become hot for the first time. Although these odours are harmless it is recommended that the appliance is operated on maximum for 4 to 8 hours in order to fully burn off these coatings. After this period the odours should then disappear.

If the odours persists, please contact your installer for advice.

- 11.2 During the first few hours of burning there may be discolouration of the flames. This will also disappear after a short period of use.

12. Servicing

- 12.1 The appliance must be serviced every 12 months by a qualified Gas Engineer. In all correspondence always quote the Model number and the Serial number which may be found on the data badge.

13. Ventilation

- 13.1 Any purpose provided ventilation should be checked periodically to ensure that it is free from obstruction.

14. Installation Details

- 14.1 Your installer should have completed the commissioning sheet at the front of this book. This records the essential installation details of the appliance. In all correspondence always quote the Model number and Serial number.

15. Hot Surfaces

- 15.1 Parts of this appliance become hot during normal use.
- 15.2 Regard all parts of the appliance as a working surface.
- 15.3 Provide a suitable fire guard to protect young children and the infirm.

16. Appliance will not light

If you cannot light the Studio:

- 16.1 Check and change the batteries in the remote handset.
- 16.2 Check and change the wall switch batteries (see Section 6).
- 16.3 Consult your Gazco retailer or installer if the Studio still does not light.

Installation Instructions

Technical Specification

Covering the following models:

	Nat Gas	LPG
Log Effect	123-364NZ	123-411NZ

Log Versions

Model	Gas CAT.	Gas Type	Working Pressure	Aeration	Injector	Gas Rate m ³ /h	Input kW (Gross)		Country
							High	Low	
Studio 2 Duplex	I ₂ H	Natural (G20)	20mbar	14mm x 15mm	098	0.914	9.6	4.0	NZ
	I ₃ BP	Butane (G30)	29mbar	16mm x 23mm (2)	161	0.266	9.3	4.5	NZ
		Propane (G31)							
Efficiency Class 1 - 82% / NO _x Class 4									
Flue Outlet Size Ø 100mm									
Flue Inlet Size Ø 150mm									
Gas Inlet Connection Size Ø 8mm									

SPECIFIC INFORMATION FOR NEW ZEALAND

Gas Type	Natural Gas	LPG
Test Pressure Point	2kPa	2.75kPa
Gas Input Rate	34.6 Mj/h	33.5 Mj/h
Max Supply Pressure	6kPa with external regulator	3.5kPa
Design Standard	EN 613:2000 + A1:2003	

RESTRICTOR REQUIREMENT

VERTICAL & HORIZONTAL FLUE			TOP EXIT - VERTICAL ONLY INCLUDING OFFSET	
Vertical Flue Height	Horizontal Length	Restrictor Size	Vertical Flue Height	Restrictor Size
Nat Gas			Nat Gas	
1000mm - 1490mm	Up to 1000mm	No restrictor	3000 - 5990mm	Ø 70mm
1500mm - 1990mm	Up to 3000mm	No restrictor	6000mm - 10,000mm	Ø 60mm
2000mm - 3000mm	Up to 5000mm	No restrictor		
LPG			LPG	
1000mm - 1490mm	Up to 1000mm	No restrictor	3000 - 5990mm	Ø 60mm
1500mm - 1990mm	Up to 3000mm	No restrictor	6000mm - 10,000mm	Ø 52mm
2000mm - 2490mm	Up to 4000mm	No restrictor		
2490mm - 3000mm	Up to 5000mm	No restrictor		

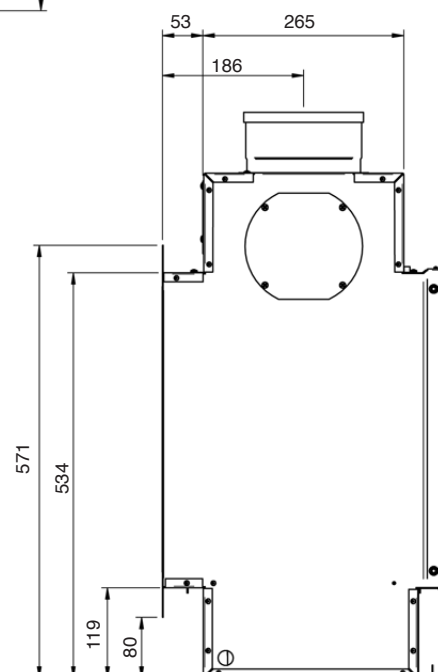
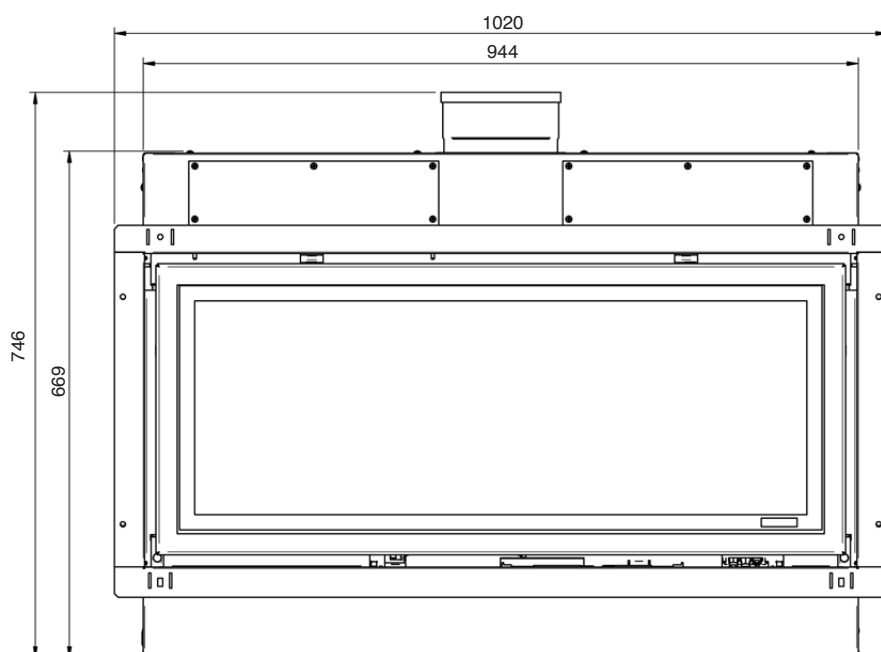
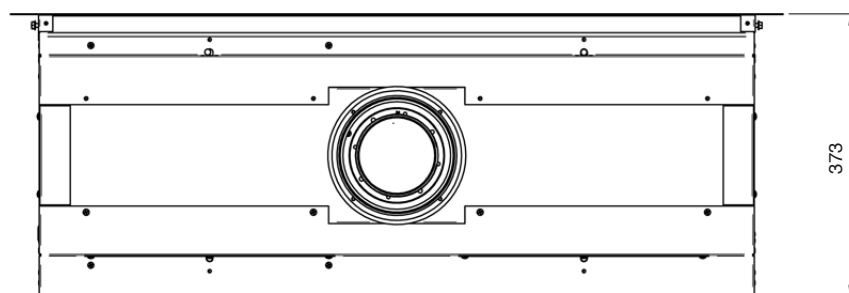
Installation Instructions

Technical Specification

This appliance has been certified for use in countries other than those stated. To install this appliance in these countries, it is essential to obtain the translated instructions and in some cases the appliance will require modification. Contact Gazco for further information.

PACKING CHECKLIST

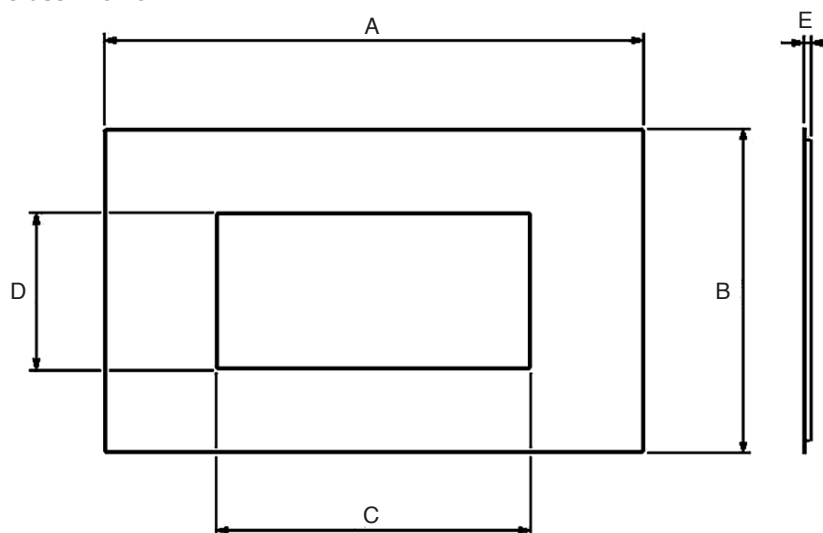
Qty Description	Fixing Kit containing:
Log Version:	1 x Instruction Manual
1 x Log Set	4 x Wood Screws
1 x Vermiculite	4 x Wall Plugs
1 x Bag Embaglow material	1 x Handset
	2 x AA 1.5 alkaline batteries
White Stone Effect Version	3 x Size C / HR14 batteries
1 x White Stone Effect	1 x Wall box
1 x Liner Set	1 x Wall plate / touch pad
	1 x Battery holder
	1 x Foam seal



Installation Instructions

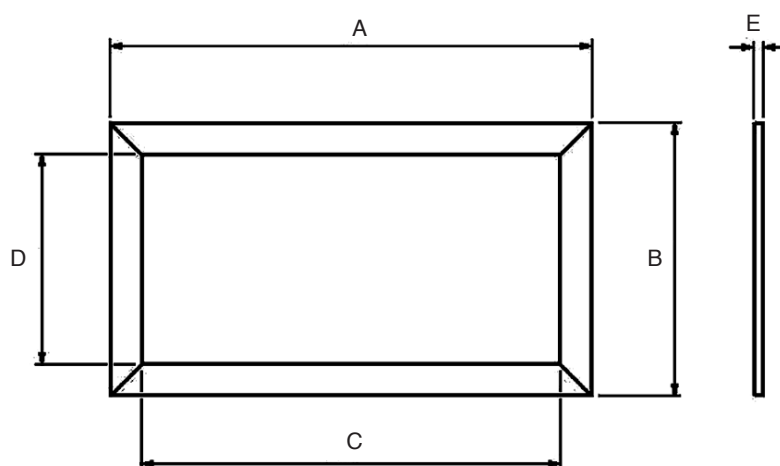
Technical Specification

Steel / Glass / Verve



Steel / Glass / Verve Fronts					
Front	A	B	C	D	E
Steel	1500	528	846	320	27
Glass	1500	528	852	324	29
Verve	1500	528	850	324	53

Profil / Bauhaus



Profil / Bauhaus Frames					
Frame	A	B	C	D	E
Profil	1036	510	940	414	12.5
Bauhaus	1050	524	940	414	28

Installation Instructions

Site Requirements

1. Flue & Chimney Requirements

Note: This appliance must only be installed with the flue supplied.

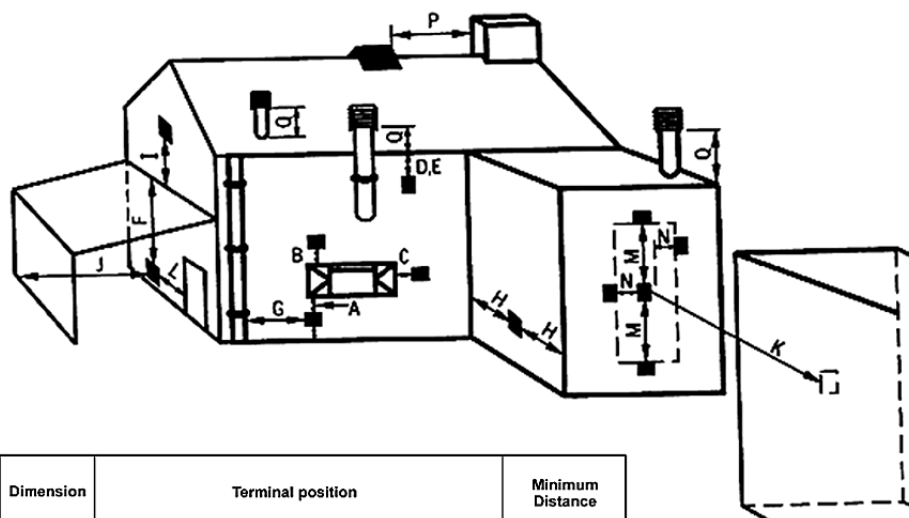
You must adhere to the following:

- 1.1 The flue must be sited in accordance with BS5440: Part 1 (latest edition), see Diagram 1.
- 1.2 Fit a guard to protect people from any terminal less than 2 metres above any access such as level ground, a balcony or above a flat roof.
- 1.3 All vertical and horizontal flues must be securely fixed and fire precautions followed in accordance with local and national codes of practice.
- 1.4 A restrictor may be required, see Technical Specifications on page 14.
- 1.5 Two types of flue terminals are available, horizontal and vertical.

- 1.6 To measure for a horizontal terminal decide on the terminal position.
- 1.7 Measure the height from the top of the appliance to the centre of the required outlet.
- 1.8 For minimum and maximum flue dimensions see Diagrams 1A/1B.
- 1.9 Allow enough room either above or to the side of the appliance to assemble the flue on top
- 1.10 Assemble a horizontal flue in the following order:
 - Vertical section
 - 90° elbow
 - Horizontal plus terminal
- 1.11 Support the opening of a masonry installation with a lintel.
- 1.12 Only the horizontal terminal section can be reduced in size.

1

UK Dimensions



Dimension	Terminal position	Minimum Distance
A*	Directly below an opening, air brick, opening windows, etc.	600mm
B*	Above an opening, air brick opening windows, etc.	300mm
C*	Horizontally to an opening, air brick opening windows etc.	400mm
D	Below gutters, soil pipes or drain pipe	300mm
E	Below eaves	300mm
F	Below balconies or car port roof	600mm
G	From a vertical drain pipe or soil pipe	300mm
H	From an internal or external corner	600mm
I	Above group roof or balcony level	300mm
J	From a surface facing the terminal (also see 6.1.2)	600mm
K	From a terminal facing the terminal	600mm
L	From an opening in the car port (e.g. door, window) into the dwelling	1200mm
M	Vertically from a terminal on the same wall	1500mm
N	Horizontally from a terminal on the same wall	300mm
O	From the wall on which the terminal is mounted	N/A
P	From a vertical structure on the roof	600mm
Q	Above intersection with roof	300mm

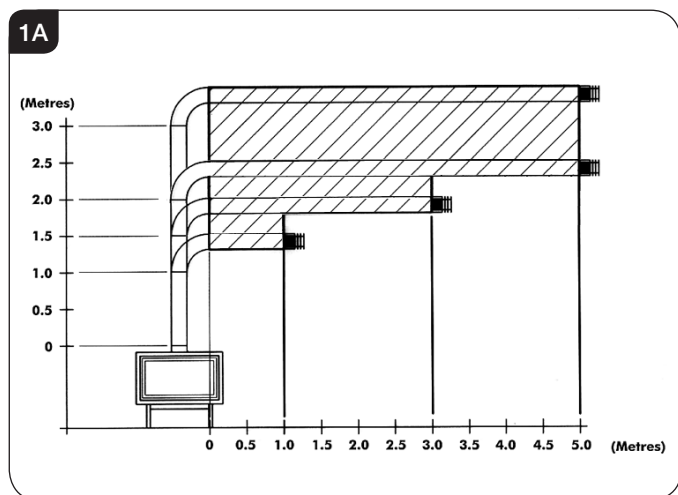
* In addition, the terminal should not be nearer than 300mm to an opening in the building fabric formed for the purpose of accommodating a built-in element such as a window frame

Installation Instructions

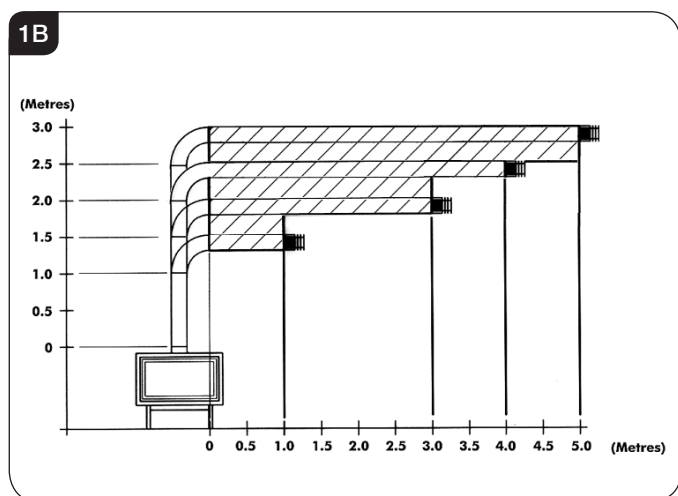
Site Requirements

2. Flue Options

STUDIO DUPLEX BF - Nat Gas



STUDIO DUPLEX BF - LPG



Start of bend to centre line of horizontal flue 170mm. Centre line of vertical flue to end of bend 220mm.

2.1 TOP FLUE UP & OUT KIT

Vertical from the top of the appliance then horizontally out, see Diagram 1A. The basic kit comprises:

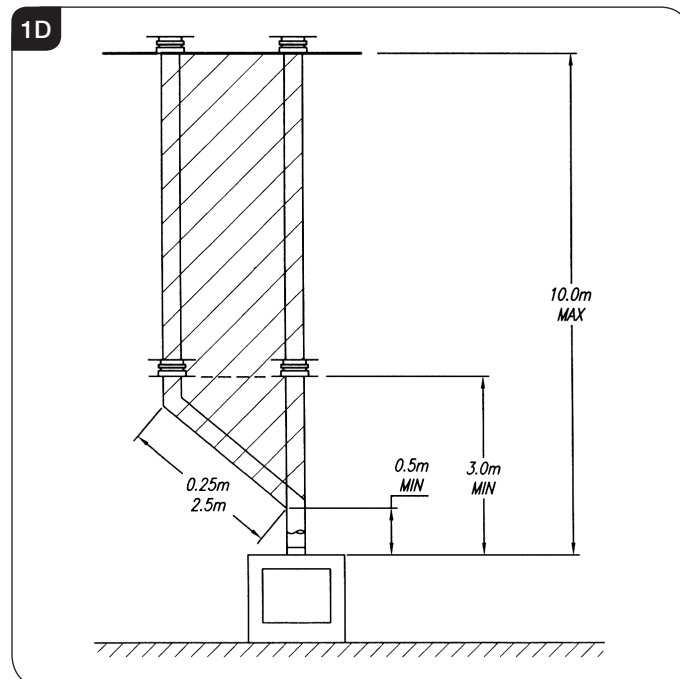
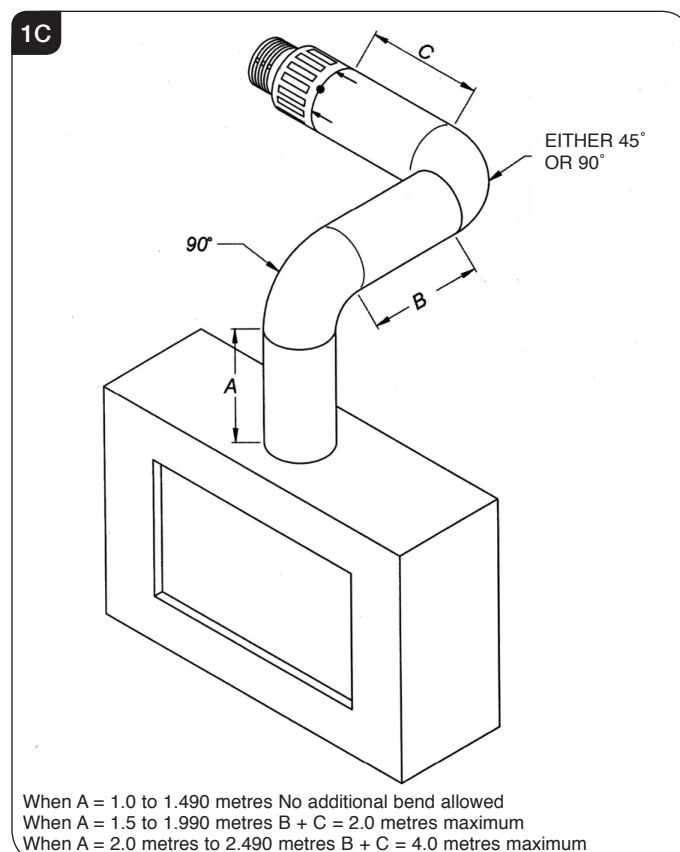
STUDIO DUPLEX BF (8567/8567AN)

- 1 x 1000mm vertical length
- 1 x 500mm terminal length (cut to length on site)
- 1 x 90° elbow
- 1 x wall plate

The kit may be used on its own. Extra lengths may be added to the vertical and horizontal, see Section 2.5.

2.2 TOP FLUE UP & OUT WITH ADDITIONAL BEND

Any additional bend may be used on the horizontal section (either 45° or 90°), but the overall horizontal flue run will be reduced. Refer to Diagram 1C.



Installation Instructions

Site Requirements

2.3 TOP FLUE VERTICAL KIT (8524/8524AN)

Vertical from the top of the appliance, see Diagram 1D. A minimum vertical rise 3m (9'10") to a maximum 10m (32'10"). The basic kit comprises:

- 2 x 1m lengths
- 1 x 1m terminal length
- 1 x 52mm restrictor
- 1 x 47mm restrictor
- 1 x 60mm restrictor
- 1 x 70mm restrictor

Extra lengths may be added from the list below.

2.4 TOP FLUE VERTICAL OFFSET KIT (8530/8530AN)

Used with kit 8524. A minimum rise of 500mm (19¹/₂) is required to the first bend, see Diagram 1D.

2.5 EXTRA FLUE LENGTHS

All flue components are 150mm diameter (6")

NOMINAL LENGTH	ACTUAL LENGTH	STAINLESS FINISH	ANTHRACITE FINISH
200mm	140mm	8527	8527AN
500mm	440mm	8528	8528AN
1000mm	940mm	8529	8529AN
40° Bend	N/A	8507	8507AN
90° Bend	N/A	8508	8508AN

NOTE - Carefully consider:

- a) Terminal positions
- b) Flue supports
- c) Weatherproofing
- d) Fire precautions

For all the above options, you must conform to local and national codes of practice.

3. Gas Supply

THIS APPLIANCE IS INTENDED FOR USE ON A GAS INSTALLATION WITH A GOVERNED METER.

- 3.1 Before installation, ensure that the local distribution conditions (identification of the type of gas and pressure) and the adjustment of the appliance are compatible.
- 3.2 Ensure the gas supply delivers the required amount of gas and is in accordance with the rules in force.
- 3.3 You can use soft copper tubing on the installation and soft soldered joints outside the appliance and below the firebed.
- 3.4 A factory fitted isolation device is part of the inlet connection; no further isolation device is required.
- 3.5 All supply gas pipes must be purged of any debris that may have entered prior to connection to the appliance.

- 3.6 The gas supply enters through the silicone panel located on the LEFT-HAND side of the outer box. Slit with a sharp knife before passing the supply pipe through
- 3.7 The gas supply must be installed in a way that does not restrict the removal of the appliance for servicing and inspection.

4. Ventilation

- 4.1 This appliance requires no additional ventilation.

5. Appliance Location

- 5.1 Please note this appliance has been designed for studwork installations. There are three decorative finishing options that can be used on both sides or in a combination with another depending on individual preference.
IMPORTANT: These finishing methods will effect the construction of the studwork so the relevant sections must be consulted before beginning the installation.

The three decorative finishing options are:

**Frame (see Installation Instructions, Section 4).
Edge (see Installation Instructions, Section 5).
Cool Wall (see Installation Instructions, Section 6).**

- 5.2 This appliance must stand on a non-combustible platform that is at least 12mm thick.

NOTE: If you intend to construct the fascia of the fireplace opening from natural materials it is recommended you cut this into three or more sections to prevent cracking. Resin-based materials may not be suitable. This appliance is an effective heat producer and attention must be paid to the construction and finish of the fireplace.

- 5.3 A combustible shelf must be:
 - Maximum 150mm in depth.
 - Minimum 400mm high above the appliance.

A combustible side wall must be a minimum of 150mm from the appliance.

- 5.4 This appliance can be installed with an up and out flue (vertical wall - horizontal flue) or with a vertical flue with roof termination (see Site Requirements, Section 2, Flue Options).
- 5.5 This appliance is not suitable for installation onto a combustible wall. Remove all combustible material from the area shown, see Installation, Section 3.1.

Installation Instructions

1. Safety Precautions

- 1.1 For your own and other's safety, you must install this appliance according to local and national codes of practice. Failure to install the appliance correctly could lead to prosecution. **Read these instructions before installing and using this appliance.**
- 1.2 These instructions must be left intact with the user.
- 1.3 Do not attempt to burn rubbish on this appliance.
- 1.4 Keep all plastic bags away from young children.
- 1.5 Do not place any object on or near to the appliance and allow adequate clearance above the appliance.

IF THE APPLIANCE IS EXTINGUISHED OR GOES OUT IN USE, WAIT 3 MINUTES BEFORE ATTEMPTING TO RELIGHT THE APPLIANCE.

i **IMPORTANT: REFER TO DATA BADGE AND TECHNICAL SPECIFICATION AT THE FRONT OF THE MANUAL TO ENSURE THE APPLIANCE IS CORRECTLY ADJUSTED FOR THE GAS TYPE AND CATEGORY APPLICABLE IN THE COUNTRY OF USE.**

FOR DETAILS OF CHANGING BETWEEN GAS TYPES REFER TO SERVICING, SECTION 15, REPLACING PARTS.

Unpacking

- 1.6 Remove the appliance from its packaging, and check that it is complete and undamaged.

Put the loose ceramic parts to one side so that they are not damaged during installation.

2. Installation of the Appliance

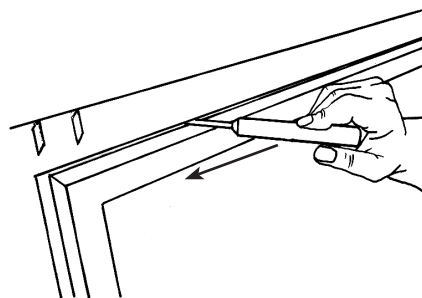
GAZCO RECOMMENDS THIS APPLIANCE IS INSTALLED INTO A STUDWORK CONSTRUCTION.

This method of installation will require the attachment of frame fixing brackets prior to the installation of the outer box see Section 4.9.

i **THERE IS AN OPTIONAL DUCT KIT, CODE No. 8572 WHICH CAN BE FITTED AT THE SAME TIME AS THE APPLIANCE INSTALLATION**

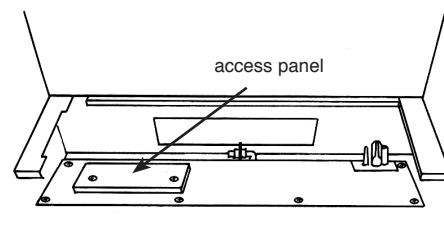
- 2.1 To open the glass door, use the hexagon key provided:
- 2.2 Release the window locks moving each from shut to open towards the outer edge of the glass door, see Diagram 1.

1



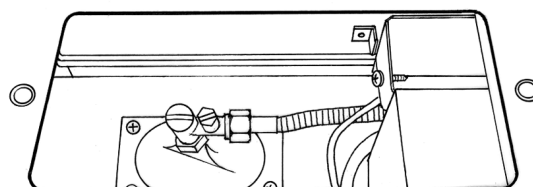
- 2.3 Remove all the liners where necessary, see Replacing Parts, Section 5.
- 2.4 Remove the Main Burner, see Replacing Parts, Section 7.
- 2.5 The gas supply enters the appliance through a silicon panel on the floor under the access panel, see Diagram 2.

2



- 2.6 Slit with a sharp knife before bringing through the supply pipe, see Diagram 3.

3



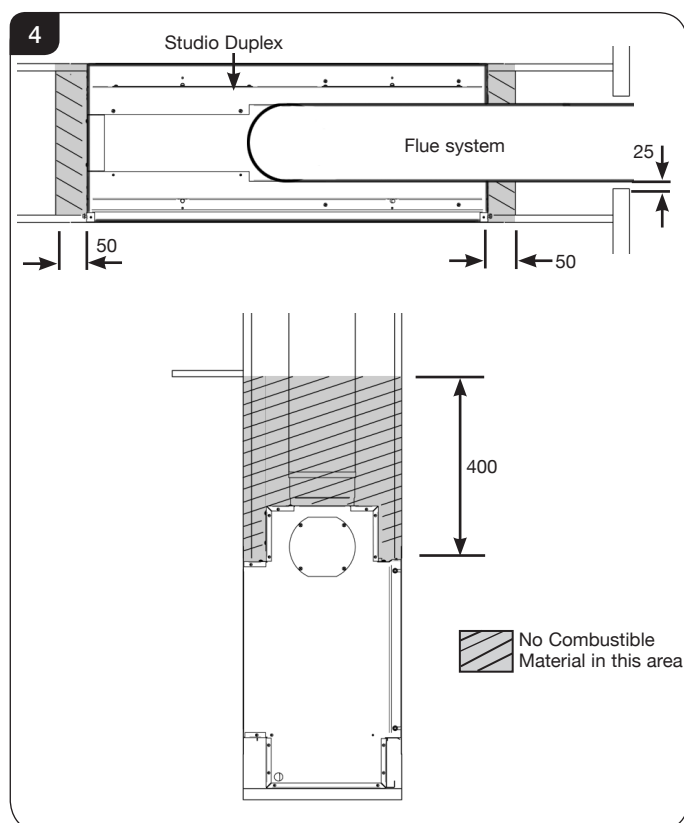
3. Studwork Installation

THERE ARE THREE TYPES OF INSTALLATION INTO STUDWORK DESCRIBED IN THE FOLLOWING PAGES:

- 1) FOR DUPLEX WITH A DECORATIVE FRONT, SEE SECTION 4.
- 2) FOR AN INSTALLATION WHERE THE DUPLEX SITS FLUSH TO THE FINISHED 'EDGE' OF THE WALL, SEE SECTION 5.
- 3) FOR A FURTHER 'EDGE' INSTALLATION PROVIDING A COOL WALL ABOVE THE APPLIANCE TO ALLOW CUSTOMERS TO HANG PICTURES ETC, SEE SECTION 6.

3.1 DISTANCE TO COMBUSTIBLE MATERIAL

COMBUSTIBLE PARTS OF THE STUDWORK MUST BE KEPT BEYOND THE MINIMUM DIMENSIONS SHOWN IN DIAGRAM 4. EVEN IF THE FRAMEWORK IS PROTECTED BY NON-COMBUSTIBLE MATERIAL, YOU MUST MAINTAIN THESE DIMENSIONS, SEE DIAGRAM 4.



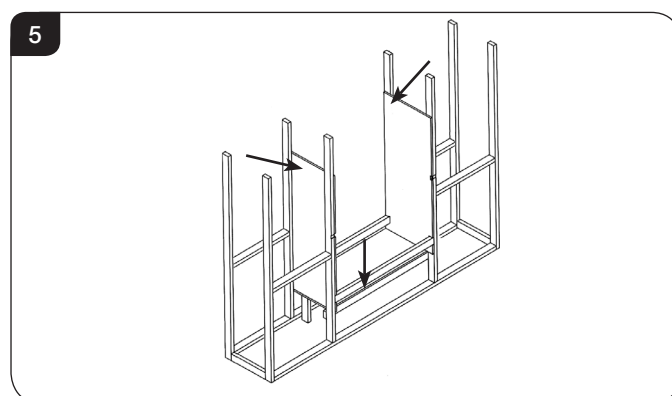
- 3.2 DO NOT PACK THE VOID AROUND OR ABOVE THE APPLIANCE WITH INSULATION MATERIALS SUCH AS MINERAL WOOL.
- 3.3 THE VOID BUILT FOR THE CASSETTE MUST BE VENTILATED TO PREVENT A BUILD-UP OF HEAT. IF THE VOID IS SEALED, THEN YOU MUST FIT VENTS AT BOTH LOW AND HIGH LEVELS OF APPROXIMATELY 50CM² EACH. THESE VENTS MUST TAKE COLD AIR FROM THE ROOM AND RETURN WARM AIR BACK INTO THE ROOM.

Installation Instructions

- 3.4 AN ACCESS HATCH MUST BE LEFT IN THE SIDE OF THE CHIMNEY BREAST FOR FUTURE SERVICING AND INSPECTION OF THE FLUE AND APPLIANCE.

4. Studwork Installation for Studio with frames

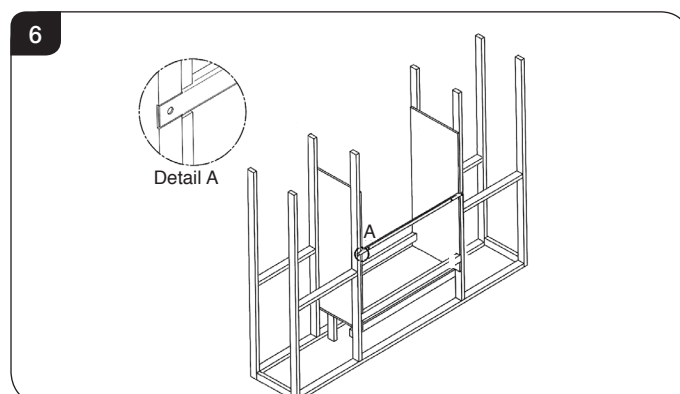
- 4.1 Build the studwork chimney breast and enclosures to the desired size to include the protected platform at the required height.
- 4.2 Line the aperture for the appliance with 12mm thick non-combustible material as shown, see Diagram 5.



- 4.3 Ensure the clearances are maintained, see Diagram 4.
- 4.4 Site the appliance and decide on flue requirements.
- 4.5 Provide gas and electric services into the cassette void on the left-hand side.

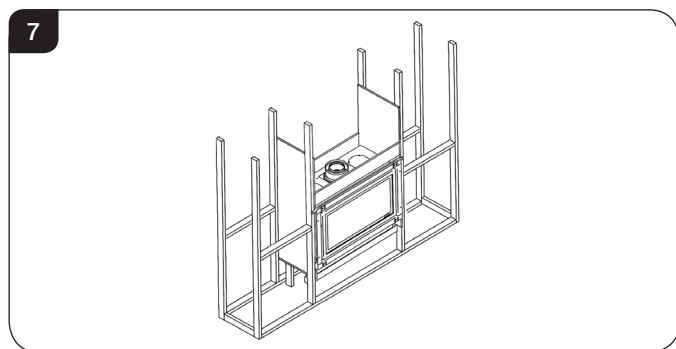
Because no combustible material can be used above the appliance, we provide a support bar:

- 4.6 Mark out the position to fit the supplied top support bar into the studwork at the correct height. This bar needs to be recessed into the studwork, see Diagram 6.

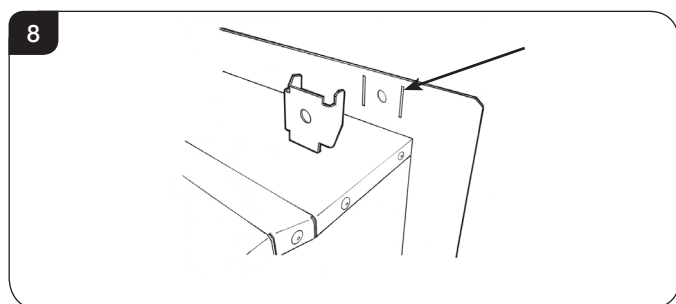


- 4.7 Fit the support bar into the studwork at the correct height, see Diagram 7.

Installation Instructions



- 4.8 Attach the 4 x frame fixing brackets to the appliance, see Diagram 8.



- 4.9 Fix foam seal to the rear of the outer flange of the appliance.
- 4.10 Position the appliance in the studwork.
- 4.11 There is an adjustable flange on one side of the appliance that allows the depth to be adjusted up to an extra 8mm to aid with the installation.
- 4.12 Fit non-combustible board to the studwork on the opposite side to the adjustable flange. This should extend a minimum of 400mm above the appliance and at least 50mm to the sides of the appliance (from the outer box, not the flanges).
- 4.13 Apply plasterboard to the remainder of the studwork.
- 4.14 Secure the back of the appliance to the studwork using four screws through flange, bracket and support bar.
- 4.15 Apply a plaster finish to the chimney breast.
- 4.16 Connect the flue system from the open side of the studwork, see Installation Section 8.
- 4.17 Apply plasterboard to the open side of the chimney breast and use the adjustable flange to ensure that there are no gaps in the installation.

Slips

Because of the high temperatures this appliance achieves, it is advisable to use marble slips or similar material between the appliance and the plasterboard.

Never use a one-piece slip as expansion (even cracking) can occur.

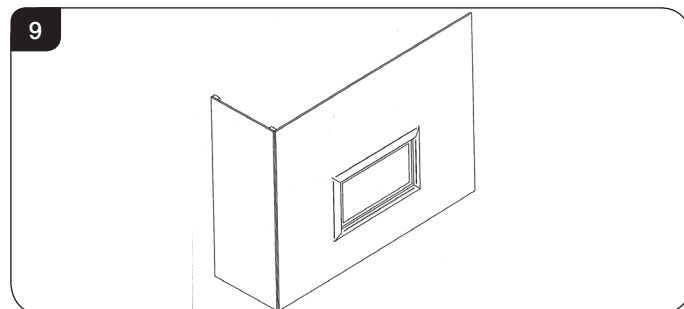
Note: If a slip is used, longer screws are needed to secure the appliance.

To finish this installation:

- 4.18 Connect the wall box and batteries following the instructions in Section 7 below.
- 4.19 Connect:
— Gas services, see Installation, Section 2, using the opening in the side of the chimney breast for access.

After commissioning:

- 4.20 Finish the sides of the chimney breast, see Diagram 9.

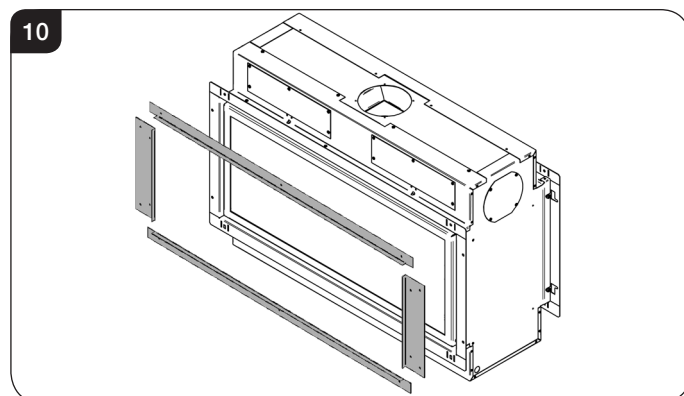


5. Studwork for Studio Edge installation kit

There is an optional Studio Edge Installation Kit available for installing the appliance without a frame: Studio Code No. 8727BF EK02.

Using the installation kit:

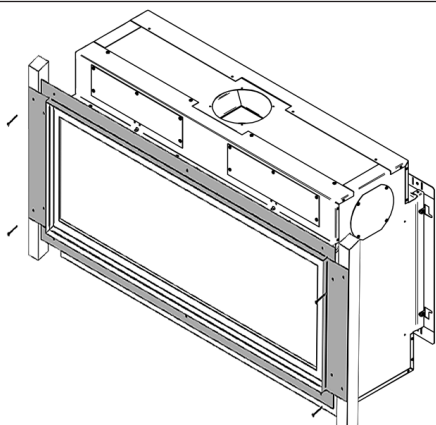
- 5.1 Fit the four metal brackets of the kit to the appliance, see Diagram 10.



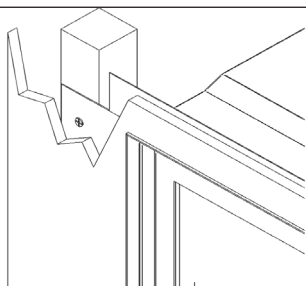
- 5.2 Put vertical studwork at minimum clearance to the side of the appliance (50mm).
- 5.3 Secure to the vertical studwork through the holes in the metal brackets fitted to the appliance.
- 5.4 The kit has been designed so that non-combustible board can be taken right up to the edge of the four brackets, see Diagrams 11 & 12.

Installation Instructions

11

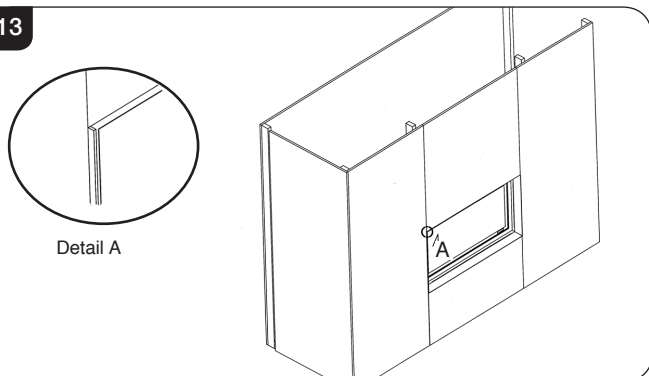


12



- 5.5 Build the studwork chimney breast to the desired size.
- 5.6 Ensure all clearances to combustible material are maintained (see Section 3.1 above).
- 5.7 Decide on flue requirements.
- 5.8 Fit non-combustible board to the studwork above the appliance. This should extend a minimum of 400mm above the appliance.
- 5.9 Fit plasterboard to the remaining chimney breast front.
- 5.10 Connect the flue system and gas services using the opening in the side of the chimney breast for access.
- 5.11 After commissioning, finish the sides of the chimney breast, see Diagram 13.

13



- 5.12 Apply a plaster finish to the chimney breast using heat resistant plaster in the area directly above the appliance.

6. Studwork for Cool Wall installation kit

For this cool-wall installation, the convected heat produced by the appliance is channelled into the chimney cavity and vented at the top.

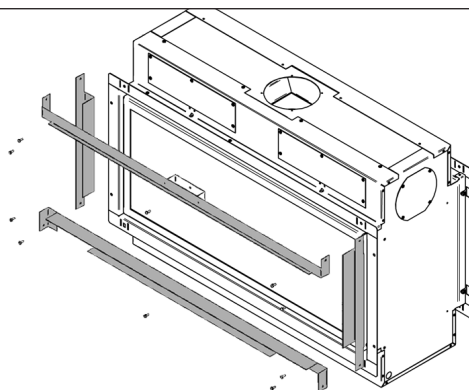
The cool wall installation kit is provided unfinished. This allows the kit to be finished to match the front face decor.

There is an optional Studio Cool Wall Installation Kit available for installing the appliance without a frame: Studio Code No. 8727BFCW02.

Using the fixing kit:

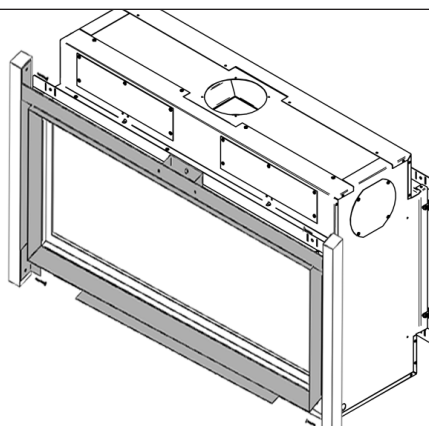
- 6.1 Fit the four metal brackets of the kit to the appliance, see Diagram 14. There is a deliberate gap at the top for convected heat.

14

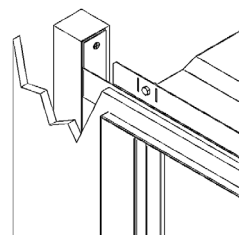


- 6.2 This now determines the width of your two vertical studwork supports. The kit has been designed so that non-combustible board can be taken right up to the edge of the four brackets, see Diagrams 15 & 16.

15

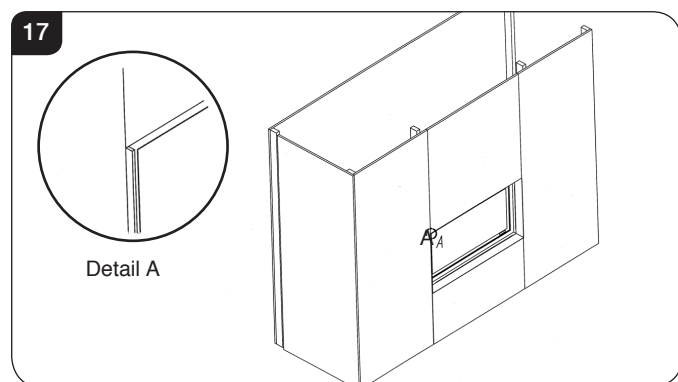


16



Installation Instructions

- 6.3 Fix the left and right metal brackets into the studwork. Build the studwork chimney breast to the desired size.
- 6.4 Ensure all clearances to combustible material are maintained, see Section 3.1.
- 6.5 Decide on flue requirements.
- 6.6 Fit non-combustible board to the studwork above the appliance. This should extend a minimum of 400mm above the appliance.
- 6.7 Fit plasterboard to the remaining chimney breast front.
- 6.8 Connect the flue system and gas services using the opening in the side of the chimney breast for access.
- 6.9 After commissioning, finish the sides of the chimney breast, see Diagram 17.



- 6.10 The top of the chimney breast must have a minimum 200cm² vent.
- 6.11 Apply a plaster finish to the chimney breast.

7. All types of installation into Studwork - Wall Box & Batteries

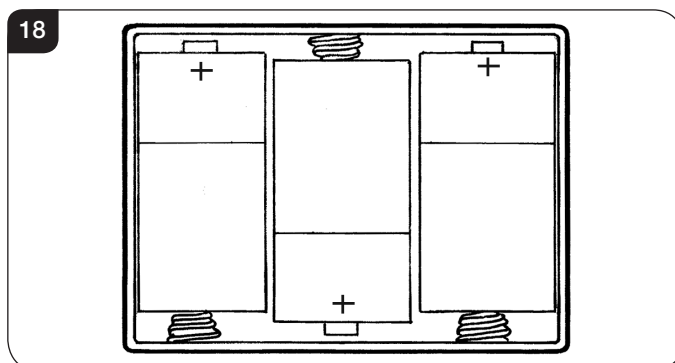
- 7.1 Decide on the position for the wall box containing the batteries and wall switch.

NOTE:

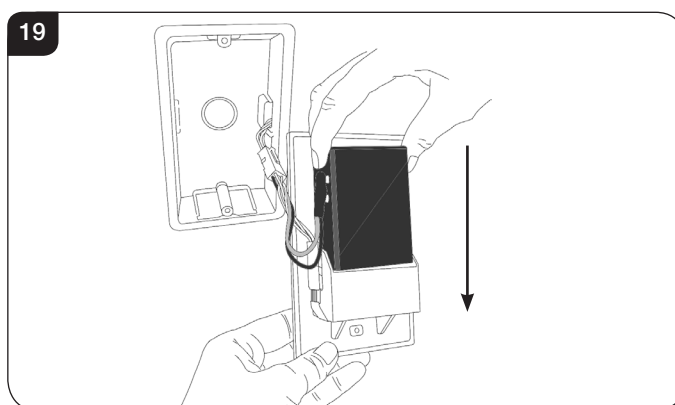
A combined battery power supply and touch control cable is supplied and pre-fitted to the appliance control. Provision is made for the cable to exit either the left or right of the appliance through the grommet. The cable is 3 metres long.

When deciding the route of the cables consideration must be given to avoiding contact with the appliance and the flue system.

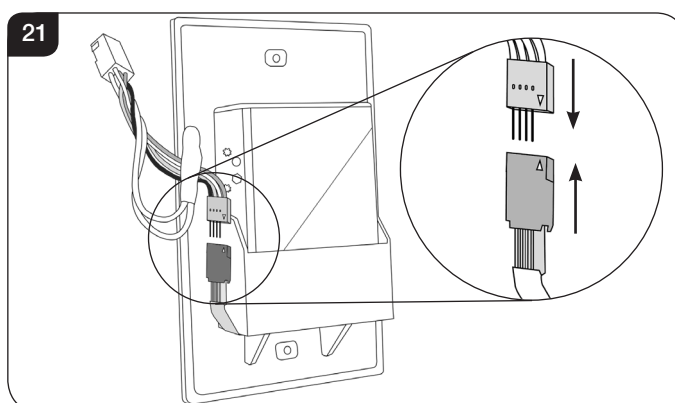
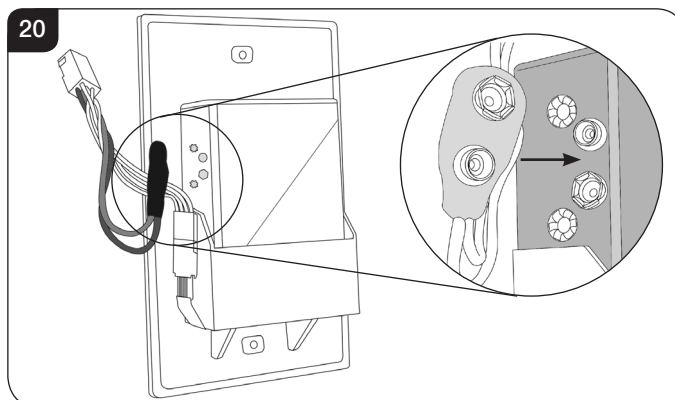
- 7.2 Correctly position the three new high quality (Duracell or similar) size C / HR14 batteries into the battery holder. Replace the cover by sliding it on to the battery holder.



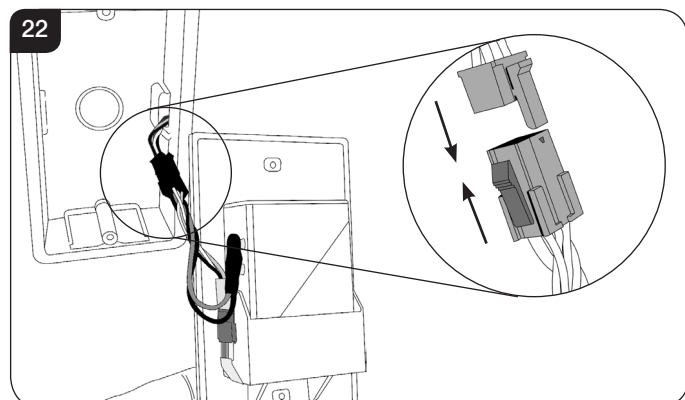
- 7.3 Slide the battery box into its housing in the back of the wall plate, see Diagram 19.



- 7.4 Ensure both sets of wires are connected, see Diagrams 20 & 21. **When replacing the 4 pronged connector ensure that the arrows are aligned.**

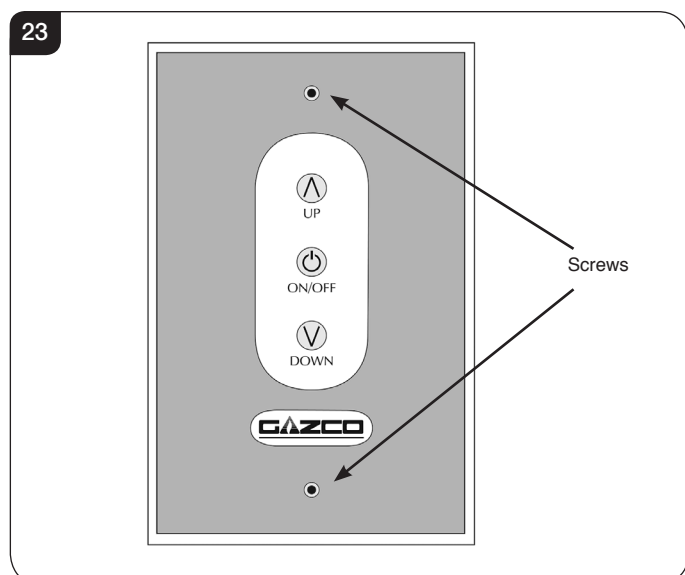


- 7.5 Connect the cable from the appliance to the touch pad cable, see Diagram 22.



- 7.6 **IMPORTANT: THE WALL SWITCH MUST BE INSTALLED USING THE PLASTIC DRY LINING BOX SUPPLIED.**

Secure the wall plate to the dry lining box with the 2 x screws provided, see Diagram 23.



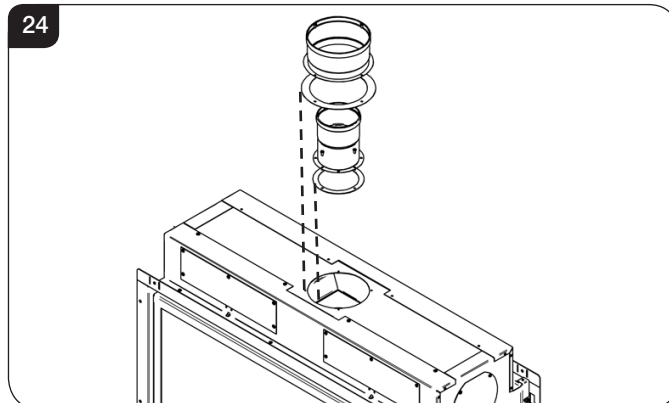
PLEASE ENSURE NO WIRES ARE TRAPPED BEFORE REPLACING THE WALL PLATE. THE TOUCH PAD LEAD IS EASILY DAMAGED.

8. Flue Assembly

- 8.1 See Site Requirements, Section 2, Flue Options.

TAKE CARE WHEN MARKING OUT FOR THE FLUE AS IT IS DIFFICULT TO MOVE AFTER INSTALLATION. IF A RESTRICTOR IS REQUIRED FIT THIS BETWEEN THE SMALL OUTLET SPIGOT AND THE AIR DUCT, SEE DIAGRAM 24. REFER TO TECHNICAL SPECIFICATIONS FOR RESTRICTOR SIZE.

Installation Instructions



- 8.2 A 152mm (6") diameter hole in the wall is required to install the flue. This can be achieved by using either:

- a) Core drill
- b) Hammer and chisel

- 8.3 Drill small holes around the circumference when using method b). Make good both ends of the hole.

- 8.4 Allow enough room either above or to the side of the appliance to assemble the flue on top.

- 8.5 Assemble a horizontal flue in the following order:

- Vertical section
- 90° elbow
- Horizontal plus terminal

- 8.6 Support the opening of a masonry installation with a lintel.

- 8.7 Only the horizontal terminal section can be reduced in size.

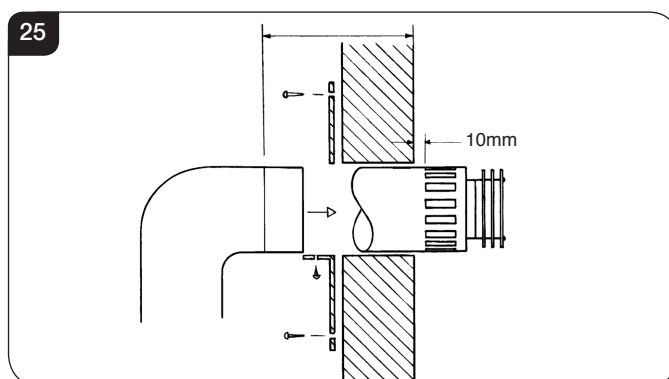
To find the length:

- 8.8 Measure from the outside of the wall to the stop on the 90° elbow.

- 8.9 **Add 10mm to the outlet end.**

- 8.10 Measure from the edge of the slots closest to the wall.

- 8.11 Mark around the flue, see Diagram 25.

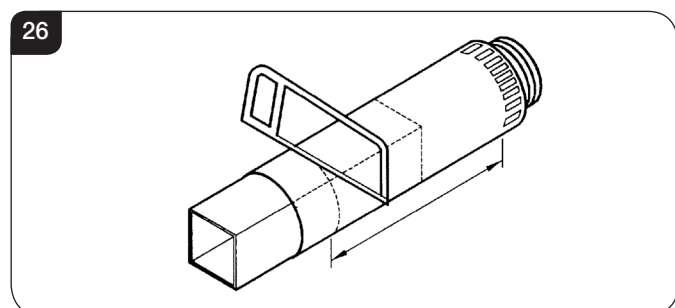


A wall plate is supplied to fix the flue to the wall:

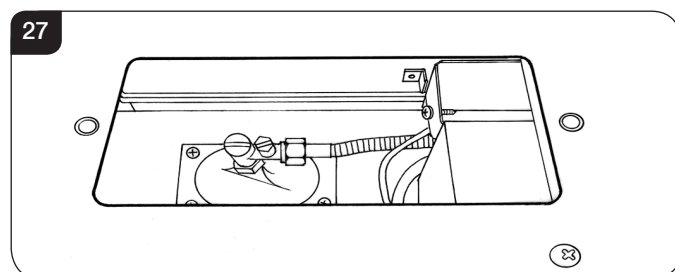
- 8.12 Bend the tab to 90°.

Installation Instructions

- 8.13 Assemble the plate onto the flue but do not secure to wall until the flue is fully assembled, see Diagram 27.
- 8.14 The cardboard fitment in the terminal is used to support the flue whilst it is cut to length. **ONCE CUT TO SIZE REMOVE THE CARDBOARD REMNANT**, see Diagram 26.



- 8.15 Remove the compression elbow from the appliance and connect it to the gas supply pipe.
- As the appliance is fitted into the enclosure:
- 8.16 Pass the elbow and supply pipe through the silicone panel on the LEFT HAND side.
- 8.17 **PURGE THE SUPPLY PIPE.** This is essential to expel any debris that may block the gas controls.
- 8.18 Connect the elbow to the appliance inlet pipe, see Diagram 27.



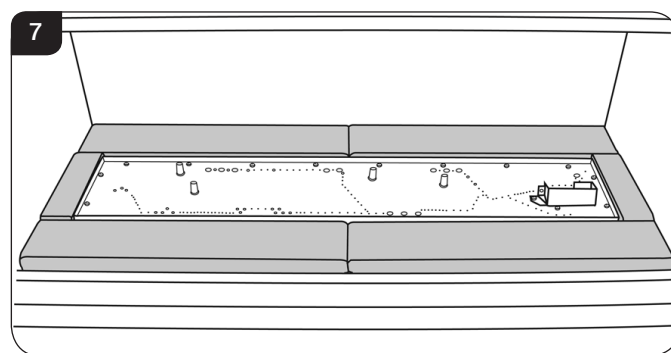
- 8.19 Connect a suitable pressure gauge to the test point located on the inlet fitting.
- 8.20 Turn on the gas.
- 8.21 Light the appliance and check for leaks.
- 8.22 Turn the appliance to maximum and check that the supply pressure is as stated on the data badge.
- 8.23 Turn off the gas and replace the test point screw.
- 8.24 Turn the gas back on and check the test point for leaks.

9. Assembling the Appliance

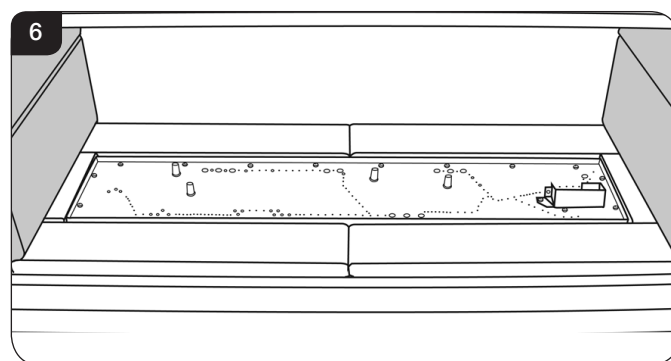
The Log Effect Studio Duplex has the option of two different liner finishes:

Vermiculite
Black Reeded

- 9.1 Fit the lower liners around the burner tray, see Diagram 7.



- 9.2 Fit the side liners, see Diagram 6.



10. Arrangement of the fuel bed

Advice on handling and disposal of fire ceramics



The black reeded liners are made from Refractory Ceramic Fibre (RCF), a material which is commonly used for this application.

Protective clothing is not required when handling these articles, but we recommend you follow normal hygiene rules of not smoking, eating or drinking in the work area and always wash your hands before eating or drinking.

To ensure that the release of RCF fibres are kept to a minimum, during installation and servicing a HEPA filtered vacuum is recommended to remove any dust accumulated in and around the appliance before and after working on it. When servicing the appliance it is recommended that the replaced items are not broken up, but are sealed within heavy duty polythene bags and labelled as RCF waste.

RCF waste is classed as stable, non-reactive hazardous waste and may be disposed of at a licensed landfill site.

Excessive exposure to these materials may cause temporary irritation to eyes, skin and respiratory tract; wash hands thoroughly after handling the material.

Installation Instructions

- 10.1 **Vermiculite for Log Layout:** Use the entire bag of supplied Vermiculite.

TAKE CARE NOT TO SPILL THE VERMICULITE INTO THE PILOT AREA. ONLY USE THE FUEL EFFECT SUPPLIED BY GAZCO IN THIS APPLIANCE.

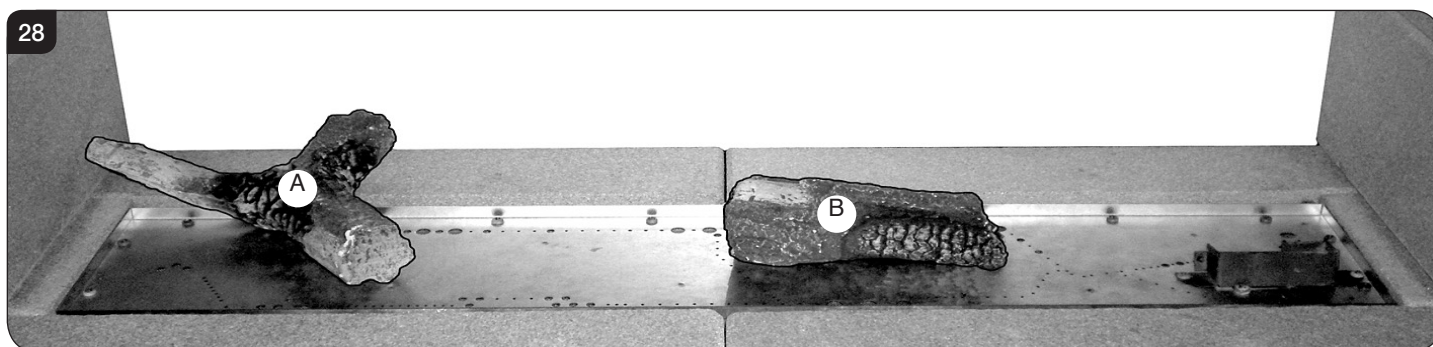
11. Log Layout

LOGS MUST BE POSITIONED ACCORDING TO THE FOLLOWING INSTRUCTIONS TO GIVE THE CORRECT FLAME EFFECT

- 11.1 In order to install the correct log layout the pilot burner must be situated on the bottom right hand side of the appliance, see Diagram 28.

All logs can be identified by a letter (A - I) on their underside. The first 2 logs, A and B, also have holes to locate each onto a burner stud.

- 11.2 Working from left to right place logs A and B onto their studs on the burner tray, see Diagram 28.



- 11.3 Use all the vermiculite to fill the burner tray between Logs A and B. Spread evenly across between the logs, so the whole burner is covered, see Diagram 29.

Ensure not to drop vermiculite down the edges of the burner tray.

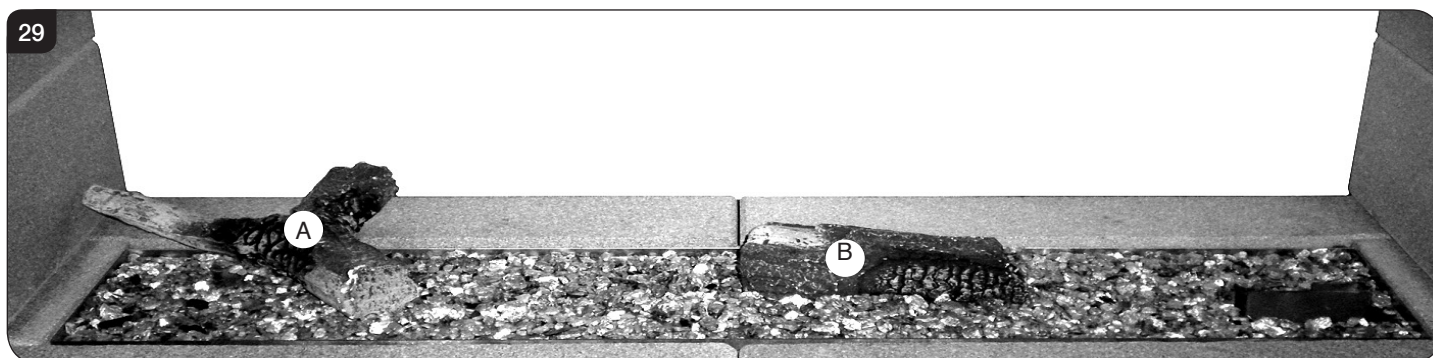
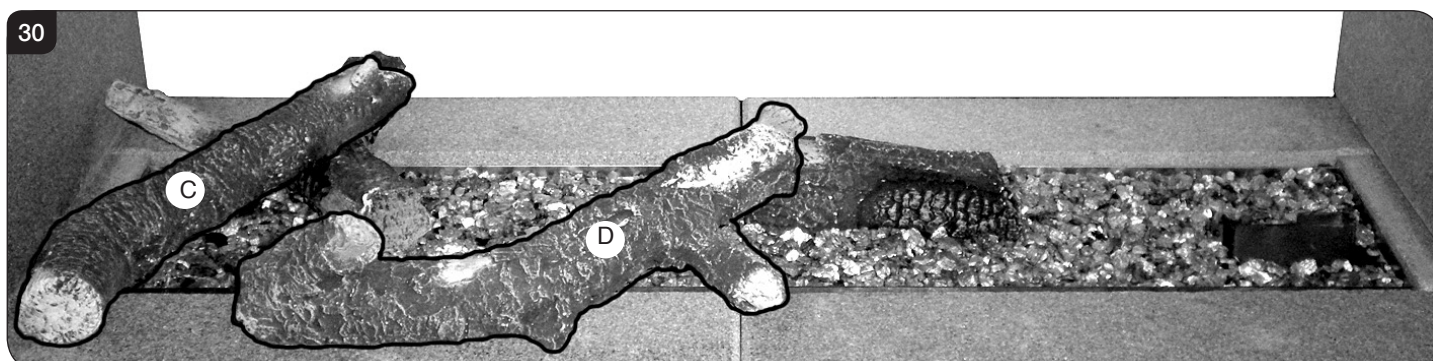


Diagram 30 shows the layout of logs C and D.

- 11.4 Place the front end of Log C on the front left panel and rest the rear end across Log A.

- 11.5 Place the front end of Log D along the front panel with the bend curving backwards with the rear end resting on Log B.



Installation Instructions

Diagram 31 shows the layout of logs E and F.

- 11.6 Place the back end of Log E on the back panel and rest the front end across Log D.

- 11.7 Place the front end of Log F onto the front right panel and rest the back end across Log B.

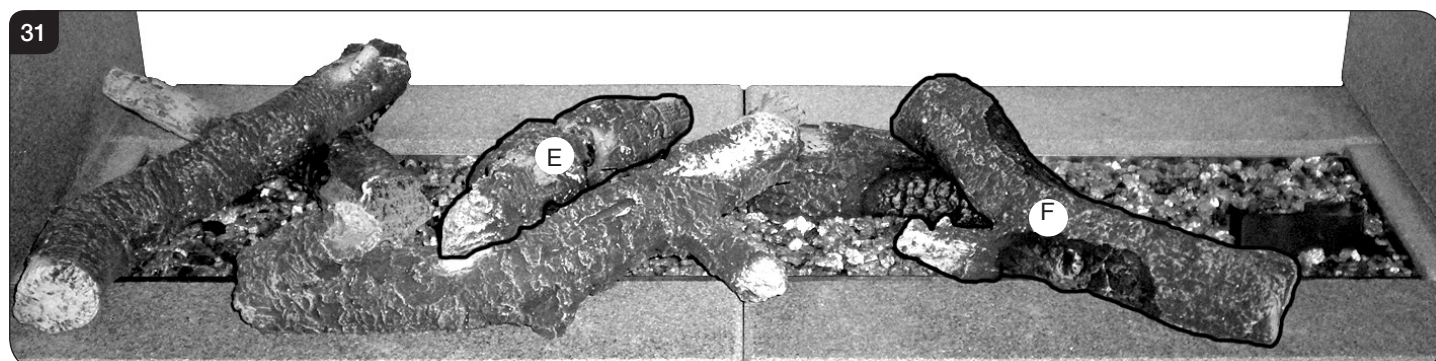


Diagram 32 shows the layout of log G.

- 11.8 Place the back end of Log G on the back right hand panel and rest the front end onto Log F.

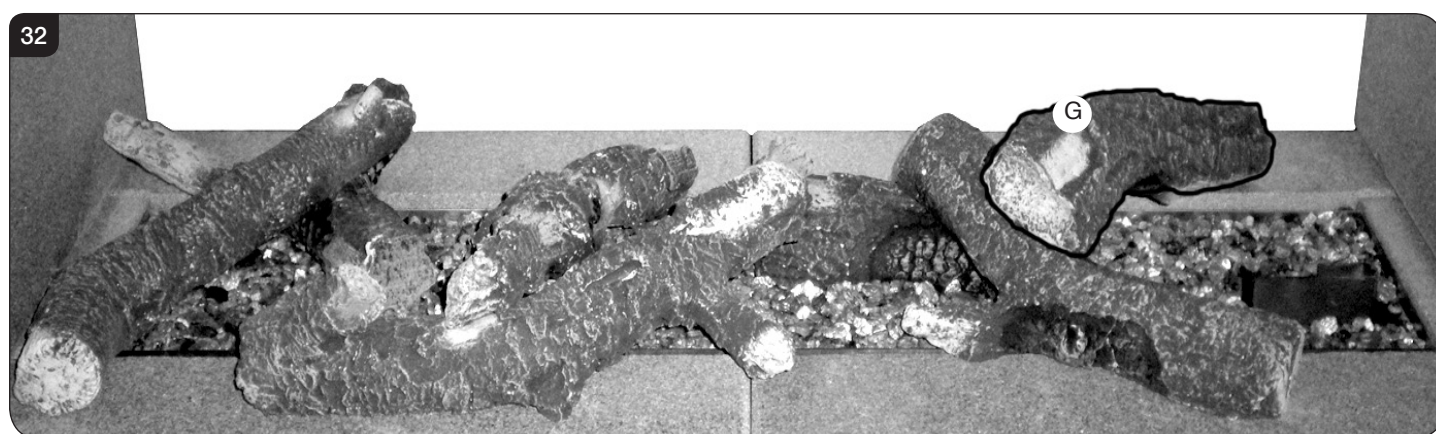
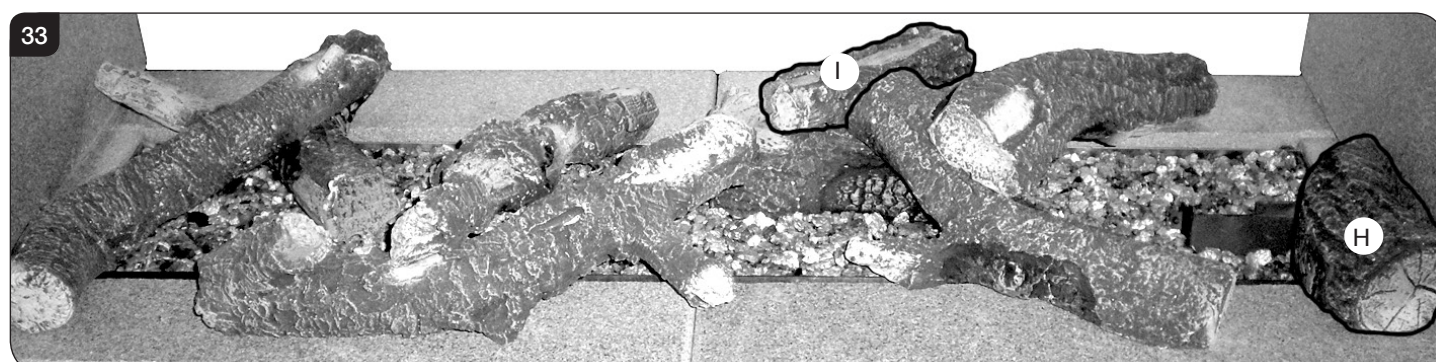


Diagram 33 shows the layout of logs H and I.

- 11.9 Place the front end of Log H onto the front right panel and against the right side panel.

- 11.10 Place the back end of Log I on the back right hand panel and rest the front end onto Log B.



- 9.11 Separate the Embaglow material into smaller pieces and pull into shape to create a fine layer.

glow and ensure the final effect is achieved.

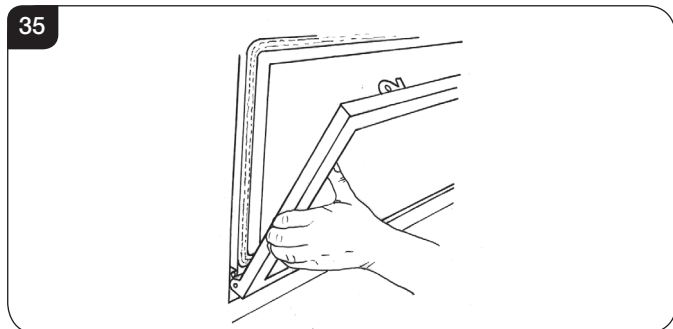
- 9.12 Place the pieces of Embaglow between the logs, in the highlighted area show in Diagram 34, to produce a random

Installation Instructions

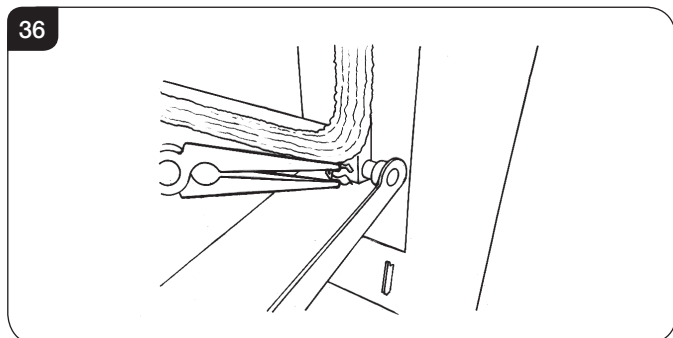


12. Completion of assembly

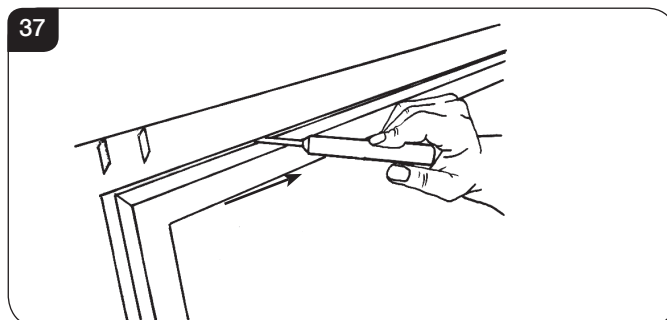
- 12.1 To fit the window frame keep the frame in the upright position with the locks uppermost.
- 12.2 Offer the frame to the foot of the opening.
- 12.3 Slide the frame to the right to locate the right hinge pin.



- 12.4 Manoeuvre the frame up towards the left side to locate the left hinge pin.
- 12.5 Slide onto the hinge with a right movement.
- 12.6 Secure in place with a spring clip at the right hinge pin, see Diagram 36.



- 12.7 Close the window.
- 12.8 Using the hexagon key provided close the window locks by moving from open to shut towards the window centre, see Diagram 37.

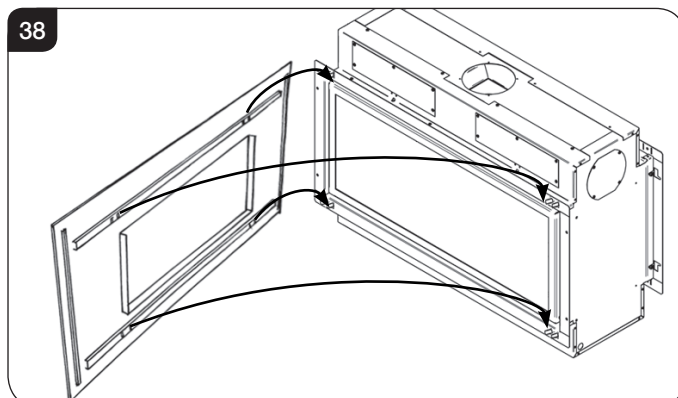


13. Decorative Frame

The fitting of the frame requires 2 people

To attach the frame:

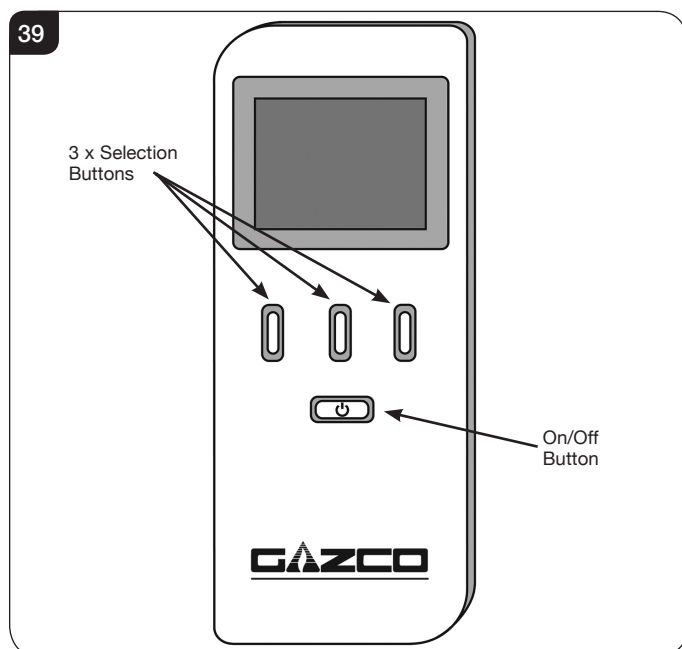
- 13.1 Rest the lower fixing angle of the frame onto the bottom brackets attached to the appliance flange.
- 13.2 Lift the upper angle onto the top brackets and lower, see Diagram 38.



Installation Instructions

14. Operating the Appliance

- 14.1 The appliance has 4 flame settings:
1. High.
 2. Medium.
 3. Low.
 4. Standby (Pilot only).
- 14.2 Both touch pad and handset allow you to manually switch between flame settings.
- 14.3 The Thermostatic handset also allows you to set the appliance to automatically regulate the room temperature.

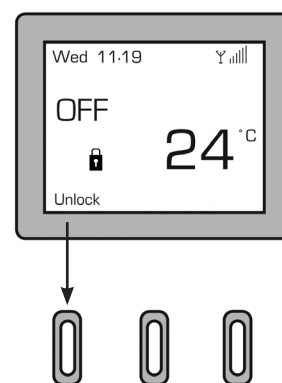


Before using the remote control:

- 14.4 If there is no display on the LCD screen press any key.
- 14.5 When first powered, the handset displays the OFF screen. The handset may be locked as indicated by the padlock symbol (🔒), see Diagram 40.

NOTE: To select a function from the options displayed at the bottom of the screen press the button directly below the desired function.

40



- 14.6 To unlock the handset select Unlock followed by OK - the symbol will change to an open padlock (🔓).
- 14.7 There are 3 different modes available for controlling and operating the appliance:
1. Manual Mode
 2. Automatic Mode
 3. Program Mode

Manual mode can be used to turn the appliance on or off and adjust the flame height. Gazco recommend using the handset in manual mode until familiar with operating the appliance.

Switching the Appliance ON:

- 14.8 Select On followed by OK. The appliance will emit a single beep and light on **pilot only**.
- If the pilot fails to light, press the ON/OFF button to switch the appliance OFF. Wait for at least 30 seconds before attempting to relight.
- 14.9 Select Manual and the screen will highlight the current flame setting (Pilot).

Increasing the Flame Height:

- 14.10 To light the main burner press UP (↑). The screen will highlight the next flame setting (Low) and the main burner will light on the **low** setting.
- 14.11 From the **low** setting press UP (↑) once to increase the flame setting to **medium**.
- 14.12 From the **medium** setting press UP (↑) once to increase the flame setting to **high**.

Decreasing the Flame Height:

- 14.13 From the **high** setting press DOWN (↓) once to decrease the flame setting to **medium**. The screen will highlight the next flame setting (Med) and the main burner will change to the **medium** setting.
- 14.14 From the **medium** setting press DOWN (↓) once to decrease the flame setting to **low**.
- 14.15 From the **low** flame setting press DOWN (↓) once to put the appliance in **Standby** mode (Pilot only).

Installation Instructions

Switching the Appliance OFF:

- 14.16 To turn the appliance **OFF** press the ON/OFF button once, see Diagram 39.

FOR FULL OPERATING INSTRUCTIONS AND TROUBLESHOOTING SEE USER SECTION.

15. Touch Pad Control

41



The touch pad control is located on the front of the wall switch and allows manual operation of the appliance, see Diagram 41.

With the touch pad it is possible to turn the appliance ON, OFF and control the flame setting.

NOTE: When using the touch pad buttons a beep will be emitted from the appliance to indicate an accepted command.

To Switch ON:

- 15.1 To turn the appliance ON press the ON/OFF button once. The ignition sequence will commence. This may take up to 20 seconds. The pilot will be lit once the start up sequence has completed.
- 15.2 If the pilot fails to light, press the ON/OFF button again to switch OFF. Wait for at least 30 seconds before attempting to switch on again.

To change the flame level:

- 15.3 With the Pilot lit the appliance is in Standby mode.
- 15.4 Press the Up button (↑). The main burner will be ignited on the Low flame setting.
- 15.5 Press the Up button (↑) again to increase the flame setting to the Medium position.
- 15.6 Press Up button (↑) once more to increase the flame setting to the High position.

- 15.7 To reduce the flame, press the Down Button (↓). At the lowest setting only the Pilot will be lit and the appliance will be in Standby mode.

To Switch OFF:

- 15.8 To turn the appliance OFF press the ON/OFF button. The pilot flame will be extinguished.

NOTE: Following main burner operation do not attempt to switch on the appliance again for at least 3 minutes.

TOUCH PAD CONTROL NOT WORKING

If the appliance is not operating with the touch pad control:

- 15.9 In accordance with User Instructions, Section 6, replace the batteries in the wall switch unit.
- 15.10 If the appliance still fails to operate consult your installer or Gazco retailer.

Commissioning

1. Commissioning

- 1.1 Complete the Commissioning Checklist at the front of this manual covering:
 - Flue checks
 - Gas checks
 - Log/fuel effect layout - flame picture

For working pressure test, use the access panel at the gas connection ensuring the burner is in position. Refer to Replacement Parts, Section 17.
- 1.2 Upon completion of the commissioning and testing of the installation and correct operation of the appliance, the installer must instruct the user how to operate the appliance.
- 1.3 Guide the user through the User Instructions paying particular attention to:
 - a) Regular servicing (Section 12 of the User Instructions).
 - b) Ventilation (Section 13 of the User Instructions) - point out the ventilation positions where applicable.
 - c) Hot surfaces (Section 15 of the User Instructions).
 - d) How the appliance works with the touch pad control (Section 5 of the User Instructions).
 - e) How the appliance works with the remote control handset and the modes of operation (Section 2 of the User Instructions).
 - f) How to change settings in the auto mode and program modes of operation.
 - g) What to do if the appliance fails to operate (Section 16 of the User Instructions).

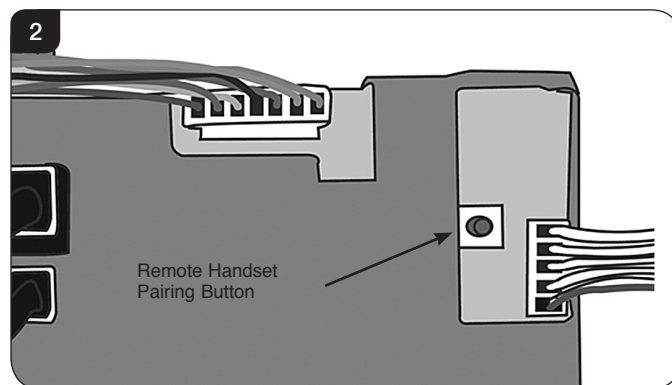
2. Pairing the appliance

If there is no communication between the remote control and the appliance after replacing the control box or the handset, it will be necessary to pair the two together.

Before starting the pairing process ensure the handset is programmed to Channel 'A' see Section 3.

- 2.1 To access the control box remove the main control assembly, see Servicing, Section 7.
- 2.2 Ensure batteries are fitted and working in the handset.
- 2.3 Check all leads and cables are connected correctly.
- 2.4 Ensure the handset is unlocked. To unlock the handset select Unlock followed by OK - the symbol will change to (⏏).
- 2.5 Press the ON/OFF button (⏏) on the handset and keep it depressed until the screen changes to the configuration menu. This may take up to 30 seconds and the screen may go blank before changing to the configuration screen.

- 2.6 When the configuration menu screen appears change the Pairing option to ON using the Change button.
- 2.7 Within 20 seconds press the yellow button on the control unit repeatedly until a single beep is heard confirming the pairing operation has been successful, see Diagram 2. This may be easier using a pencil, ball point pen or similar.



- 2.8 The remote handset will display a signal level in the top right hand corner. This may take up to 4 minutes.
- 2.9 Press the back button on the handset to return to the configuration menu and then again to return to the main menu.

3. Changing channel



WHEN ATTEMPTING A NEW PAIRING PROCEDURE THE HANDSET SHOULD BE SET TO CHANNEL 'A'. IF THE APPLIANCE IS ALREADY SET TO CHANNEL 'A' BUT NO COMMUNICATION SIGNAL STRENGTH IS SHOWN ON THE HANDSET, IT WILL BE NECESSARY TO CHANGE THE COMMUNICATION CHANNEL USING THE FOLLOWING PROCEDURE.

- 3.1 Ensure the handset is unlocked. To unlock the handset select Unlock followed by OK - the symbol will change to (⏏).
- 3.2 Press the ON/OFF button (⏏) on the handset and keep it depressed until the screen changes to the configuration menu. This may take up to 30 seconds and the screen may go blank before changing to the configuration screen.
- 3.3 Press the button below the down arrow (↓) to scroll through the menu until 'Channel' is displayed.
- 3.4 The channel is normally pre-set to A. Press the button below 'Select' and then use the down arrow (↓) to set the handset to channel B or C.
- 3.5 Disconnect the batteries from the control box and reconnect after 10 seconds.
- 3.6 The remote handset will display a signal level in the top right hand corner. This may take up to 4 minutes.

Servicing Instructions

Servicing/Fault Finding Charts

1. Servicing Requirements

IMPORTANT – The glass panels on this appliance should be checked for any signs of damage on the front face of the glass panels (scratches, scores, cracks or other surface defects). If damage is observed, the glass panel must be replaced and the appliance must not be used until a replacement is installed. Under no circumstances should the appliance be used if any damage is observed. Please isolate the appliance until a replacement glass panel has been obtained and installed. Replacement glass panels can be purchased from Gazco via the retailer from which the appliance was purchased or any other Gazco distributor.

This appliance must be serviced at least once a year by a competent person.

All tests must be carried out in accordance with current National recommendations.

1.1 Before Testing:

- Conduct a gas soundness test for the property ensuring there are no leaks before servicing.
- Check the operation of the appliance before testing.

1.2 Special checks:

- Clean away lint or fluff from the pilot.
- Clean away lint or fluff from under the burner.
- Check the spark gap on the pilot is correct.

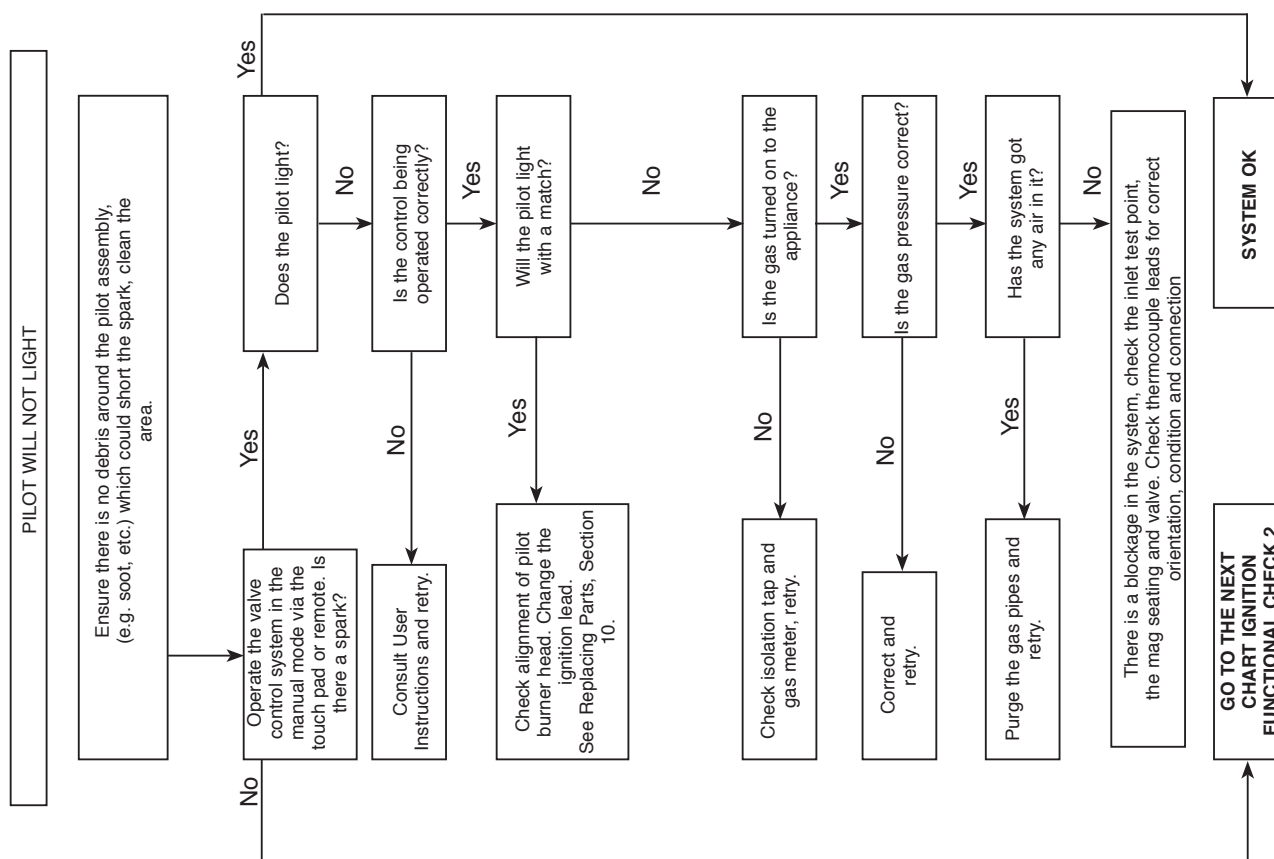
1.3 Correct any faults found during the initial test.

1.4 Re-commission the appliance in accordance with Commissioning Procedures of these instructions.

1.5 Advise the customer of any remedial work undertaken.

REPLACE BATTERIES BEFORE ATTEMPTING TO RECTIFY ANY FAULTS.

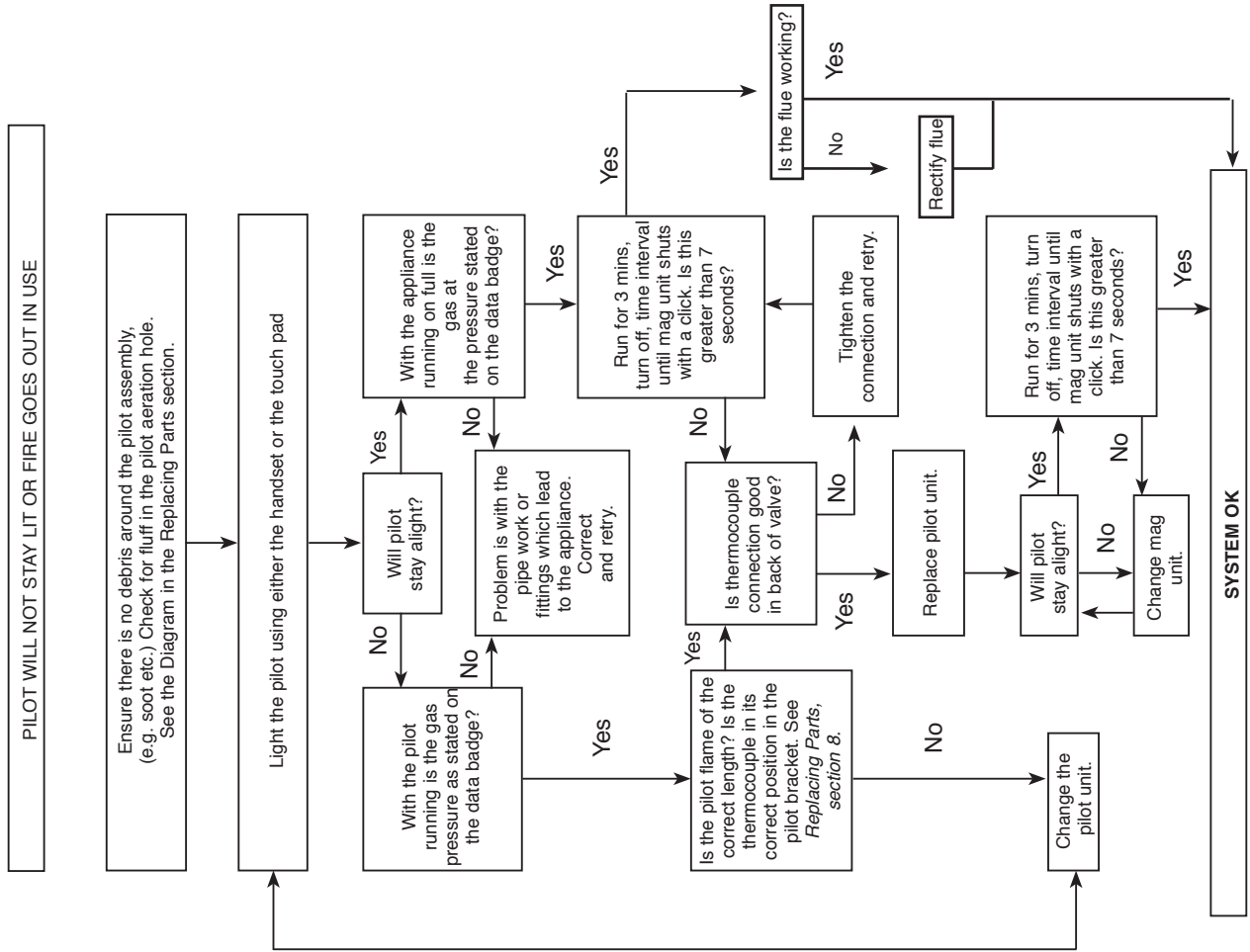
IGNITION FUNCTIONAL CHECK 1



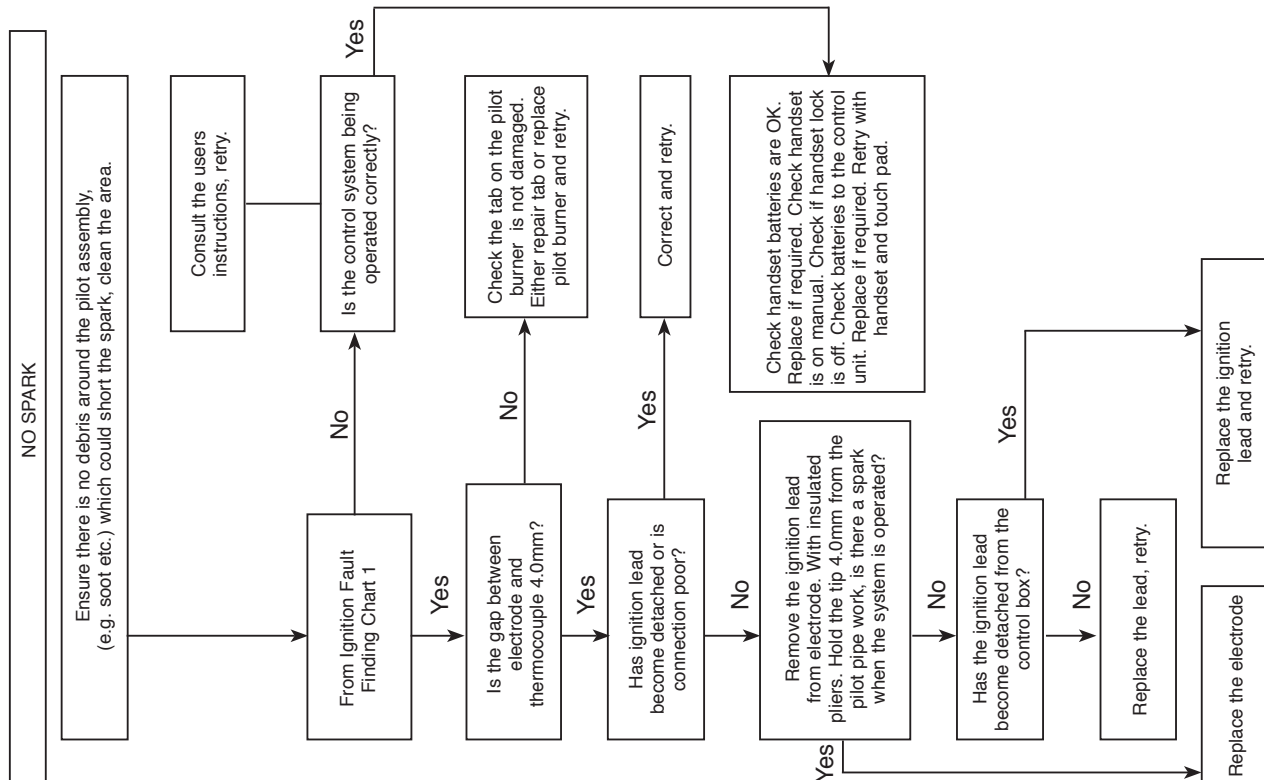
Servicing Instructions

Fault Finding Charts

FLAME FAILURE FUNCTIONAL CHECK 3



IGNITION FUNCTIONAL CHECK 2



Servicing Instructions

Fault Finding Charts

ELECTRONIC CONTROL VALVE FAULT ANALYSIS

Problem	Cause	Error Message	LCD Display	Solution
Does not ignite	No batteries or flat batteries in battery box	10 beeps	BATTERY ERROR	Place new batteries in battery box
	ROM error	2 cycles of 3 beeps	ROM ERROR	Change control unit
	Support test error	2 cycles of 5 beeps	SUPPORT ERROR	Connect earth cable from control box to valve
	Bad reception of remote handset signal			Change batteries in the remote handset
				Check the reception of signal from a shorter distance
				Try pairing again
				Try changing the channel in the configuration menu
	No response to touch control buttons	If LED is continuously on, the cable is connected the wrong way round		Ensure the touch control cable is correctly connected (see installation manual)
	Cable loose or broken or connected wrong way round			Change touch control
Sparks but no pilot ignition	Supply cable to valve disconnected or broken	2 cycles of 5 beeps	SUPPORT ERROR	Reconnect or replace valve cable
	Ignition cable disconnected or broken			Connect ignition cable
	Gas valve supply off or no gas			Check gas installation. Open gas valve
Pilot ignites but does not stay on	Valve cable disconnected or broken			Connect valve cable correctly
	Interrupter cable disconnected or broken			Connect correctly or replace pilot cable
	Pilot is not warmed up			Check pilot flame and verify that it heats the pilot
Ignites from remote handset but not from touch pad	Interrupter cable badly connected			Change polarity of pilot cable
	Interrupter cable disconnected or broken			Connect pilot cable
	Touch control cable disconnected or broken			Connect or replace touch control cable
Ignites from touch pad but not from remote	Defective touch control buttons			Change touch control
				Check batteries in handset
				Check reception of signal from a shorter distance
				Try pairing again
Switches off after 6 seconds	Short circuit in touch control	5 beeps	BUTTON ERROR	Change touch control wiring
Low batteries on remote			Low battery	Change the batteries in the remote
Appliance switches off		2 cycles of 3 beeps	CONFIG ERROR	Change control unit
		2 cycles of 3 beeps	EEPROM ERROR	Try pairing again
				Change control unit
	Loss of communication between appliance and remote for 18min	20 beeps		The remote is too far from the appliance
				Replace batteries in handset
	High temperature on control unit	1 long beep	TEMP ERROR	If this occurs more than once call the technical service
	Ambient temperature higher than configured		Over Temperature	Check the correct configuration of safety temperature

Servicing Instructions - Replacing Parts

1. General

- 1.1 All main components can be replaced without removing the appliance from its installation.

IT IS ESSENTIAL THAT THE GAS SUPPLY TO THE APPLIANCE IS TURNED OFF AT THE ISOLATION DEVICE BEFORE PROCEEDING FURTHER.

- 1.2 **DISCONNECT BATTERIES BEFORE SERVICING THE APPLIANCE.**

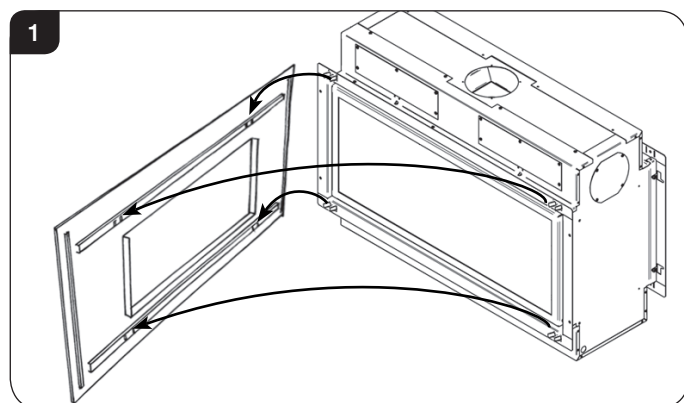
Removal of Flue

- 1.3 **If, for any reason, the flue has to be removed from the appliance, the seal must be replaced in the inner spigot.**
- 1.4 Access to the controls is restricted and the whole control assembly must be removed as one unit (see Section 8 below).

2. Decorative Frame

The same method is used to remove each frame.

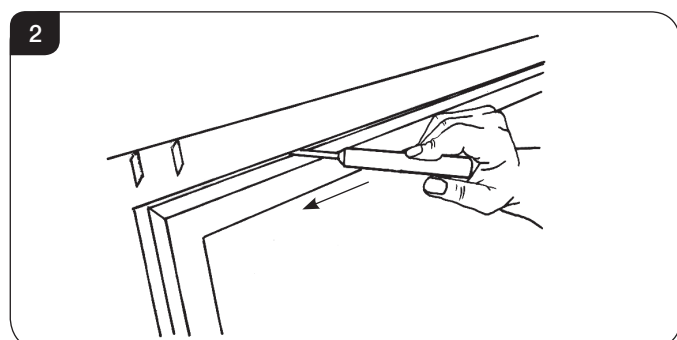
- 2.1 Lift the frame upwards off the four support brackets, see Diagram 1.



NOTE: THE STEEL FRAME IS HEAVY. TAKE CARE WHEN LIFTING.

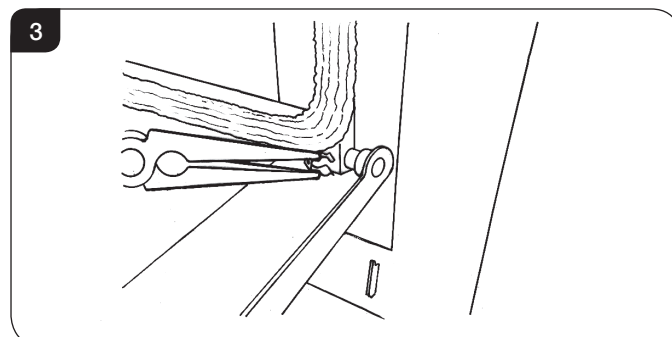
3. Window Frame Assembly

- 3.1 To open the glass door use the hexagon key provided.
- 3.2 Release the window locks by moving them from shut to open towards the outer edges, see Diagram 2.

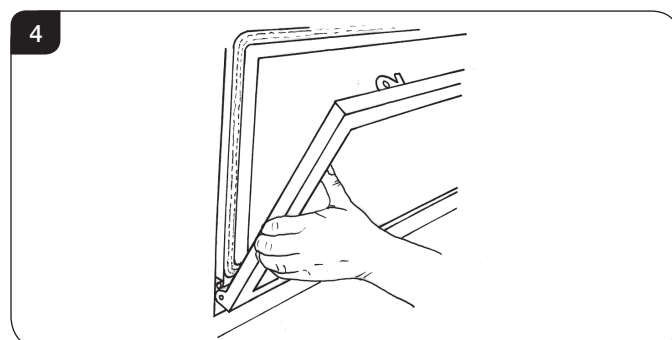


To completely remove the glass front:

- 3.3 Remove the securing spring clip from the bottom-right of the window frame, see Diagram 3.



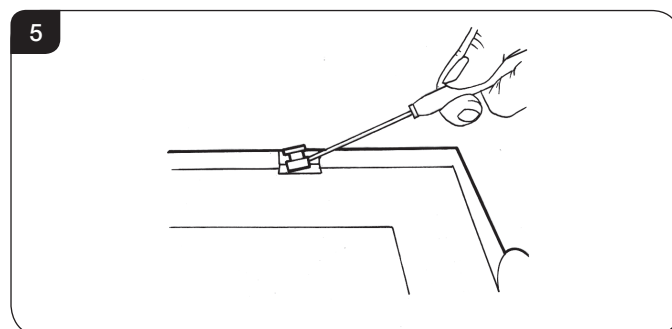
- 3.4 With the window frame in an upright position slide the frame to the left so that it comes off the left hinge pin.
- 3.5 Still keeping the frame upright drop the left side down and forward slightly, see Diagram 4.



- 3.6 Slide the frame to the right so it comes off the right hinge pin. The window frame should now be free.
- 3.7 Refit in reverse order.

4. Glass Window

- 4.1 Remove the two clips and brackets from either side of the frame, see Diagram 5.



- 4.2 Lift the glass clear from the lock bracket at the top of the frame and slide out.

Servicing Instructions - Replacing Parts

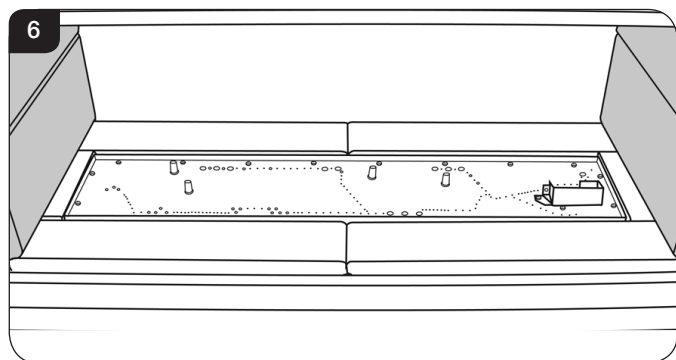
5A. Liners for Studio Duplex

5a.1 Removing of the Liners

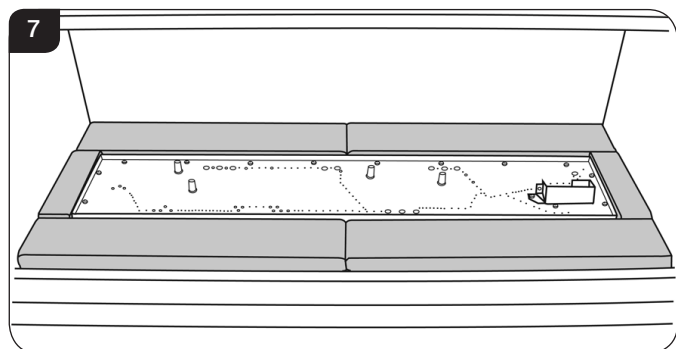
The Log Effect Studio Duplex has the option of two different liner finishes:

Vermiculite
Black Reeded

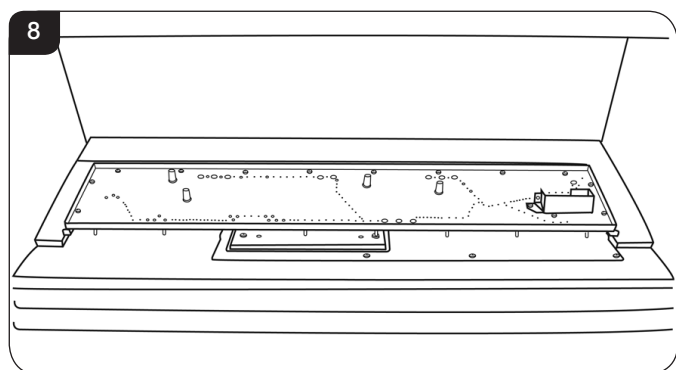
5a.2 Remove the side liners, see Diagram 6.



5a.3 Remove the lower liners around the burner tray, see Diagram 7.



5a.4 This allows access to the main burner, see Diagram 8.



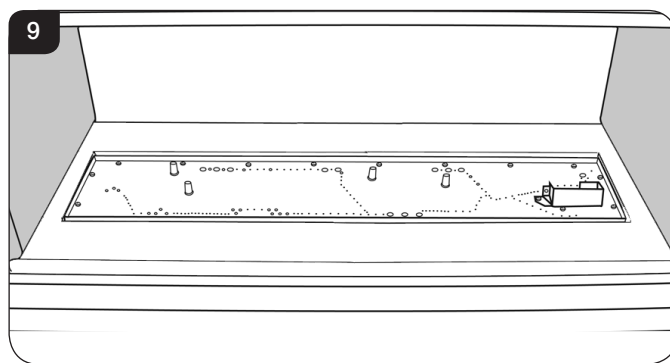
5a.5 Replace in reverse order.

5B. Enamel Panels for Studio Duplex

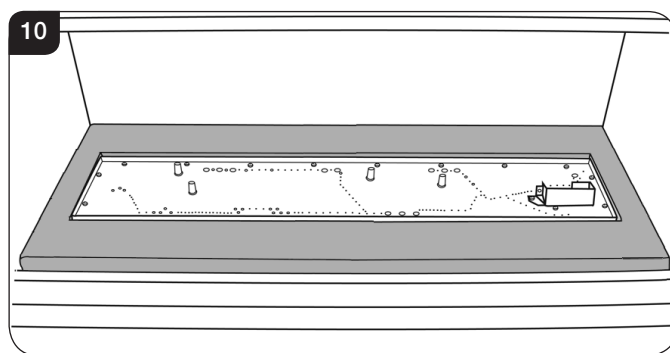
5b.1 Removing of the Enamel Panels

The Stone Chippings Effect Studio Duplex is lined with Enamel Panels.

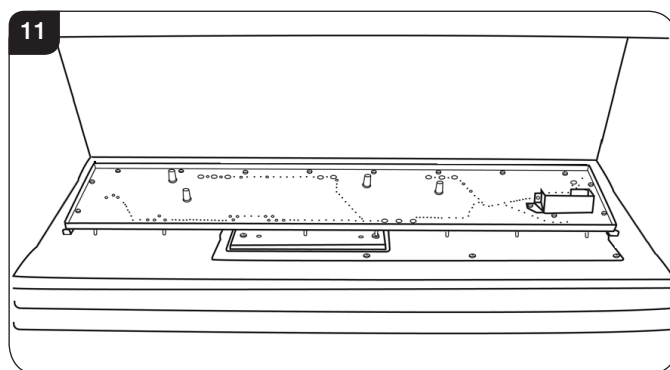
5b.2 Remove the side panels, see Diagram 9.



5b.3 Remove the lower panel - this is a complete piece that locates around the burner tray, see Diagram 10.



5b.4 This allows access to the main burner, see Diagram 11.



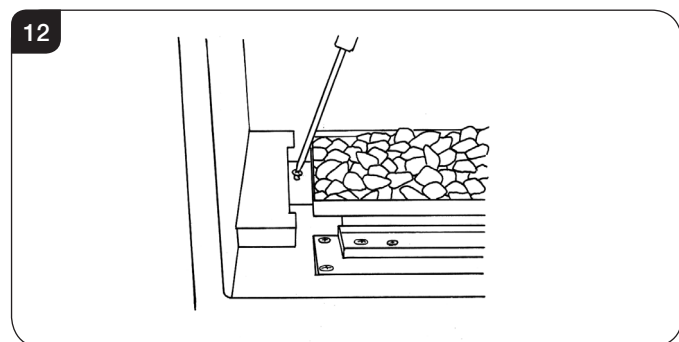
5b.5 Replace in reverse order.

Servicing Instructions - Replacing Parts

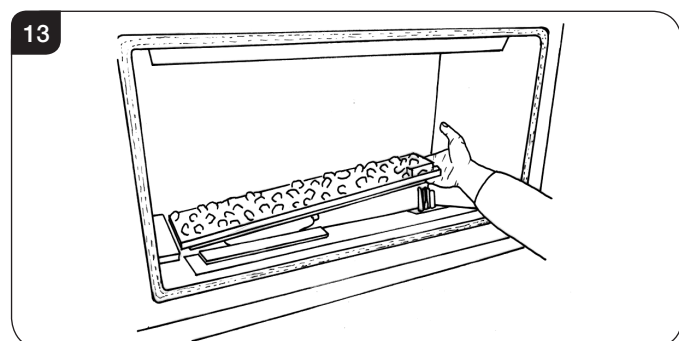
6. Main Burner

To replace the main burner:

- 6.1 Remove the fuel effect from the burner (optional).
- 6.2 Remove the liners/panels.
- 6.3 Remove the burner securing screw from the left side of the burner, see Diagram 12.



- 6.4 Slide the burner fully to the left and lift the right side clear of the pilot, see Diagram 13.



- 6.5 Slide the burner to the right and out of its location.
- 6.6 Refit in reverse order.

Ensure no fuel effect falls into the pilot area.

7. Main Control Assembly

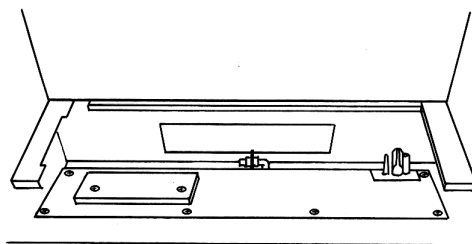
- 7.1 To access the main control assembly first remove:

- The decorative frame
- Window frame
- Liners
- Main burner

To remove the access panel:

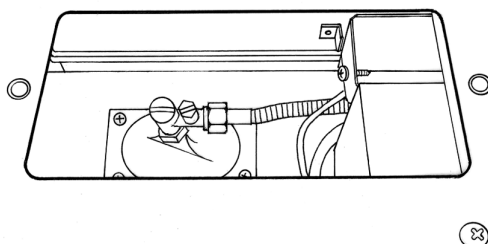
- 7.2 Undo the two screws, see Diagram 14.
- 7.3 **Note the orientation of the access panel with the return edges facing forward.**

14



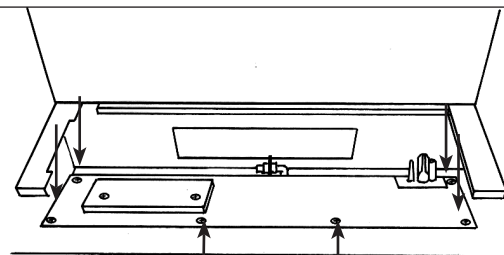
- 7.4 Isolate the gas supply at the isolation device and disconnect the gas inlet, see Diagram 15.

15



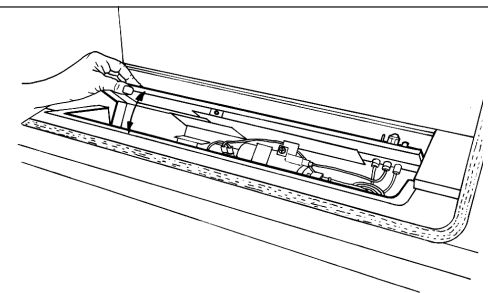
- 7.5 Remove the six screws securing the control assembly, see Diagram 16.

16



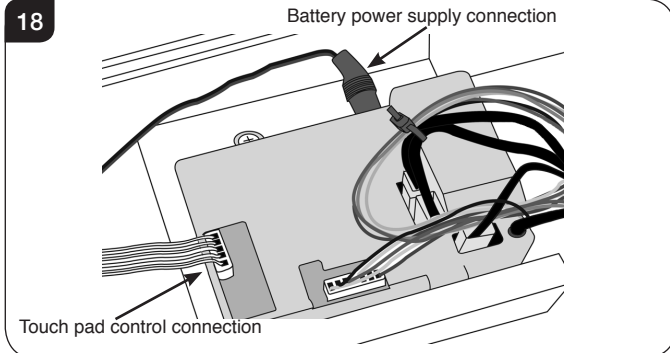
- 7.6 The control panel can now be tilted back to reveal the controls, see Diagram 17.

17



- 7.7 Disconnect the battery supply cable and the touch pad control cable from the control unit.

Servicing Instructions - Replacing Parts



- 7.8 The control assembly can now be lifted up and removed.
7.9 Reassemble in reverse order.

8. Pilot Unit

The pilot assembly consists of four components which can be individually changed:

- 8a) Pilot burner bracket.
- 8b) Electrode
- 8c) Pilot Injector
- 8d) Thermocouple.

- 8.1 Before commencing work on the pilot the Main Control Assembly must be removed (see Section 8 above).

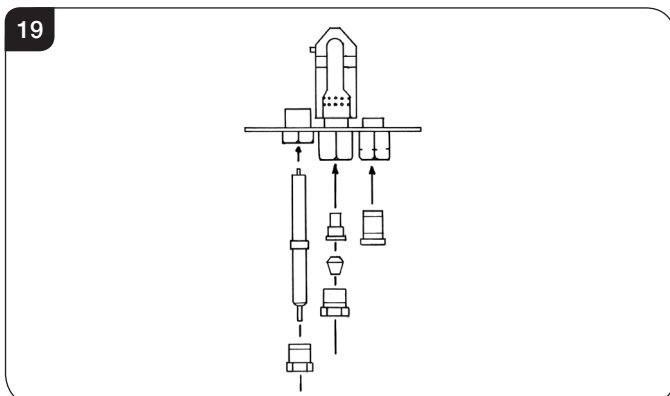
8a Pilot Burner Bracket

To remove the Pilot Burner Bracket:

- 8.2 **First remove the electrode, pilot pipe and thermocouple following points 8.6 - 8.17 below.**
- 8.3 Remove the two screws securing the bracket. The pilot burner bracket can now be removed.
- 8.4 Check the pilot gasket and if damaged, replace with a new one.
- 8.5 Replace in reverse order.

8b Electrode

- 8.6 Pull the ignition lead off the electrode and undo the retaining nut, see Diagram 19.

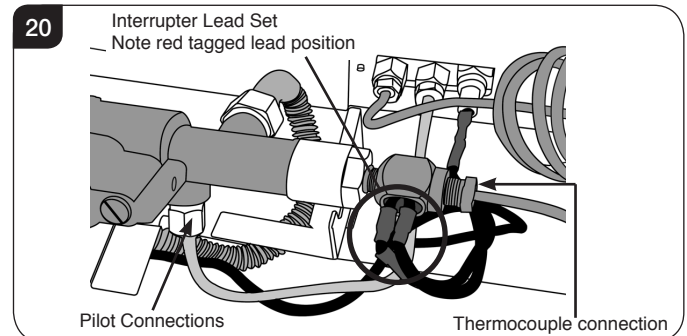


- 8.7 Replace with a new electrode. Do not over-tighten the nut; this could break the component.

- 8.8 Replace the ignition lead.

8c Pilot Injector

- 8.9 Undo the pilot pipe from the gas valve and from the underside of the pilot burner, see Diagram 20, Pilot Connections.



- 8.10 Remove the pipe and the injector drops out from the burner.

8d Thermocouple

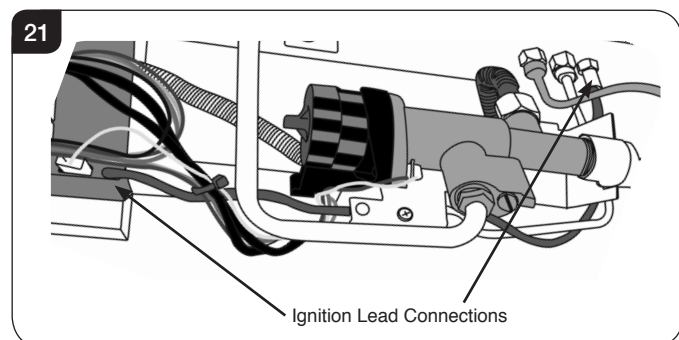
- 8.11 Disconnect the thermocouple from the gas valve/interrupter, see Diagram 20.
- 8.12 Note the position of the interrupter leads. The lead with the red tag **MUST** be placed closest to the gas valve.
- 8.13 Undo the thermocouple nut in the back of the pilot bracket half a turn. This releases the thermocouple.
- 8.14 When replacing with a new thermocouple, take care to bend the new component to the same shape as the thermocouple just removed.
- 8.15 To refit the thermocouple into the pilot bracket, ensure it is pushed fully into the hole. There is a stop on the thermocouple to set the height.
- 8.16 Lock the retaining nut just enough to grip the thermocouple.
- 8.17 Connect the thermocouple to the valve/interrupter **taking care not to over-tighten.**

Servicing Instructions - Replacing Parts

9. Ignition Lead

To replace the ignition lead:

- 9.1 Release the Main Control Assembly and tilt backwards, see Section 8 above.
- 9.2 Remove the ignition lead from the control box, see Diagram 21.

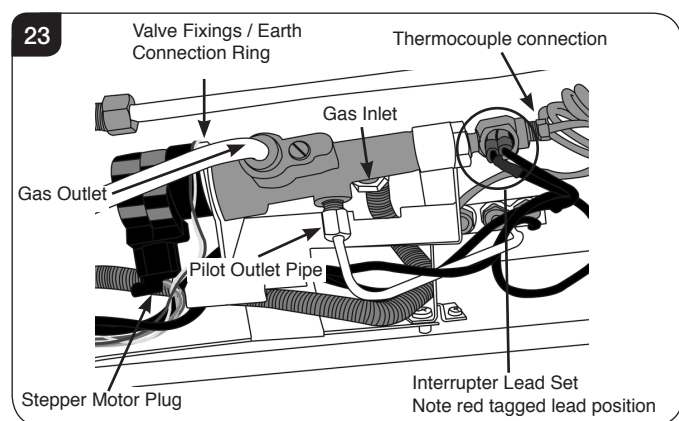


- 9.3 Remove the ignition lead from the electrode, see Diagram 22, removing cable ties where necessary.
- 9.4 **Note the direction of the lead. The new lead must follow exactly the same route. Replace cable ties where necessary.**

10. Gas Valve

To change the gas valve:

- 10.1 Remove the control assembly, see Section 7.
- 10.2 Release the gas inlet pipe, see Diagram 23.



- 10.3 Remove the thermocouple from the interrupter block.
- 10.4 Release the pilot pipe, see Diagram 23.
- 10.5 Release the gas outlet pipe, see Diagram 23.
- 10.6 Disconnect the stepper motor cable plug. Push in the latching clip on the plug to withdraw, see Diagram 23.

- 10.7 Remove the two nuts securing the valve to the support bracket and withdraw the valve.
- 10.8 Replace in reverse order.
- 10.9 Ensure that the earth cable ring tag is positioned between the valve body and the bracket.
- 10.10 Ensure the interrupter leads are connected correctly with the red tag lead nearest to the gas valve body.

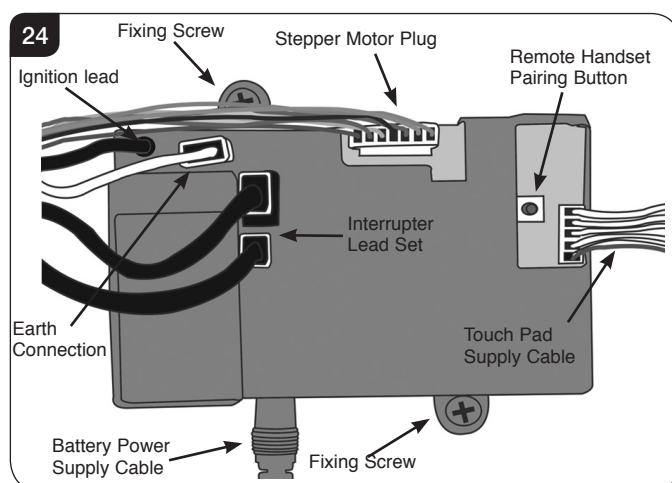
11. Magnetic Safety Valve

To replace the magnetic safety valve:

- 11.1 Undo the thermocouple from the interrupter block and remove the two interrupter leads.
- 11.2 Unscrew the interrupter block from the back of the valve.
- 11.3 Undo the silver magnetic valve retaining nut on the back of the valve.
- 11.4 Gently tap out the mag valve.
- 11.5 Replace with a new unit.
- 11.6 Reassemble in reverse order ensuring that the interrupter leads are connected correctly with the red tag lead nearest to the gas valve body.

12. Control Box

- 12.1 Disconnect from the control box:
 1. Ignition lead
 2. Interrupter leads
 3. Earth connection
 4. 7-way stepper motor plug, see Diagram 24.

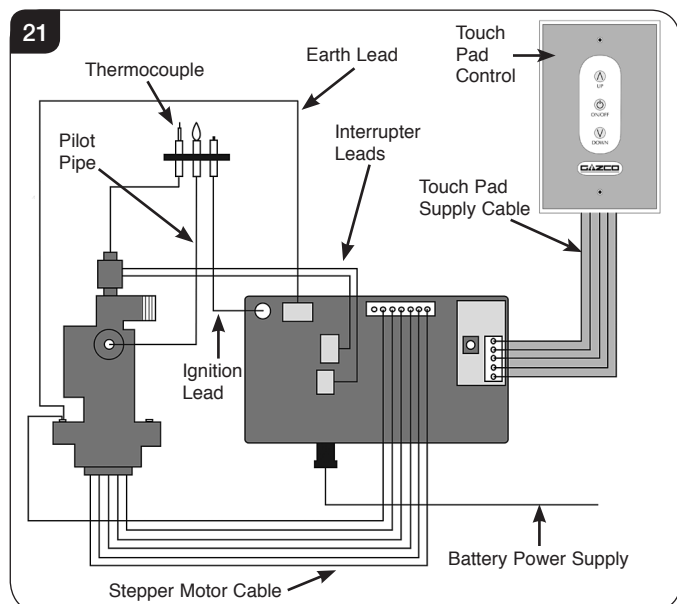


- 12.2 Remove the battery extension cable, see Diagram 24.
- 12.3 Remove the touch pad extension cable.

Servicing Instructions - Replacing Parts

The control box can now be replaced.

- 12.4 After replacing the control box ensure all connections are refitted, see Diagram 25.



- 12.5 Prior to re-connection of the control box to the appliance, if there is no communication between the remote handset and the appliance, or if the handset is replaced, it will be necessary to pair the handset with the appliance, see Commissioning Section 2.
- 12.6 Ensure batteries are fitted and working in the handset.
- 12.7 Re-fit the touch pad control cable and the battery power supply cable to the control box.

13. Main Injector

To change the main injector:

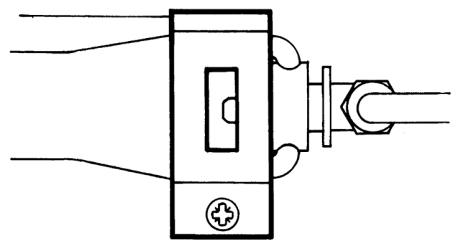
- 13.1 Undo the injector fee pipe.
- 13.2 Undo the lock nut from the injector.
- 13.3 Replace with the correct size injector.

14. Primary Aeration Plate

NOT ALL MODELS HAVE AERATION PLATES. REFER TO TECHNICAL SPECIFICATIONS, PAGES 16 & 17.

- 14.1 Remove the burner module as described in Servicing, Section 7.
- 14.2 Remove the fixing screw and slide the plate off the venturi.
- 14.3 Replace with the correct size plate and secure with the screw. Ensure the lower edge of the plate is located over the venturi flange, see Diagram 26.

26



15. Changing Between Gas Types

In order to change between gas types it will be necessary to change both the burner assembly and the complete control assembly.

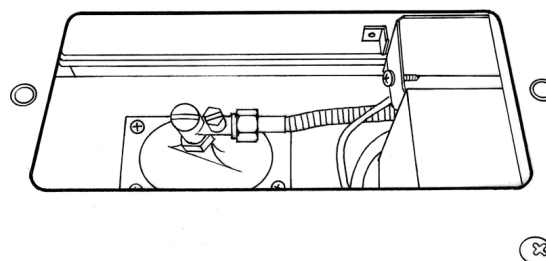
Contact your Gazco retailer for further information.

A kit of parts is available for this. Always quote the Model number and Serial number when ordering any spare parts.

16. Pressure and leak testing the appliance

- 16.1 To gain access to the pressure test point, see Diagram 27 and Section 8, Main Control Assembly.

27



- 16.2 To leak test any gas joints on the appliance the control assembly must be undone and tilted backwards, see Section 7.4, Diagram 13.
- 16.3 Because there is now no burner fitted to perform a leak test, place a manometer tube over the injector tip.
- 16.4 Light the appliance and spray any joints with leak detector fluid.
- 16.5 Tighten joints or replace as required.
- 16.6 To check the inlet working pressure, replace the control assembly and connect a manometer to the pressure test point, see Diagram 26.
- 16.7 Replace the burner and relight the appliance.
- 16.8 Operate the appliance at highest flame setting and check that the inlet pressure is in accordance with specifications detailed on pages 16 & 17.

Servicing Instructions - Replacing Parts

19. Short Spares List

LOG VERSIONS

COMPONENT	STUDIO DUPLEX	
	NG	LPG
PILOT INJECTOR	PI0069	PI0070
MAIN INJECTOR	IN0072	IN0073
BURNER ASSEMBLY	GZ10487	GZ10544
AERATION PLATE	G20 - GZ2025	G30/G31 - N/A
ELECTRODE	PI0075	
THERMOCOUPLE	PI0077	
MAG UNIT	GC0109	
IGNITION LEAD	GC0508	
GAS VALVE	GC0107	
CONTROL BOX	EL0506	EL0516
REMOTE CONTROL	EL0500	
INTERRUPTER BLOCK	GC0026	
INTERRUPTER LEADS	EL0499	
TOUCH PAD/WALL PLATE ASSEMBLY	EL0501	
TOUCH PAD LEAD	EL0502	
BATTERY HOLDER	EL0503	
BATTERY CABLE	EL0504	
CONTROL BOX/VALVE CABLE	EL0505	
	VERMICULITE	BLACK REEDED
LINING SET	923-538	923-696
LINER BASE SIDE PIECE (2 PER APPLIANCE)	CE1206	CE1200
LINER BASE FRONT L/H PIECE (2 PER APPLIANCE)	CE0689	CE1201
LINER BASE FRONT R/H PIECE (2 PER APPLIANCE)	CE0707	CE1202
LINER SIDE PANEL (2 PER APPLIANCE)	CE1003	CE1203
VERMICULITE (LOOSE)	CE0746	
LOG SET	CE1208	
EMBAGLOW PACK	GZ8471	

Service Records

1ST SERVICE

Date of Service:.....

Next Service Due:.....

Signed:.....

Retailer's Stamp/Gas Safe Registration Number

3RD SERVICE

Date of Service:.....

Next Service Due:.....

Signed:.....

Retailer's Stamp/Gas Safe Registration Number

5TH SERVICE

Date of Service:.....

Next Service Due:.....

Signed:.....

Retailer's Stamp/Gas Safe Registration Number

7TH SERVICE

Date of Service:.....

Next Service Due:.....

Signed:.....

Retailer's Stamp/Gas Safe Registration Number

9TH SERVICE

Date of Service:.....

Next Service Due:.....

Signed:.....

Retailer's Stamp/Gas Safe Registration Number

2ND SERVICE

Date of Service:.....

Next Service Due:.....

Signed:.....

Retailer's Stamp/Gas Safe Registration Number

4TH SERVICE

Date of Service:.....

Next Service Due:.....

Signed:.....

Retailer's Stamp/Gas Safe Registration Number

6TH SERVICE

Date of Service:.....

Next Service Due:.....

Signed:.....

Retailer's Stamp/Gas Safe Registration Number

8TH SERVICE

Date of Service:.....

Next Service Due:.....

Signed:.....

Retailer's Stamp/Gas Safe Registration Number

10TH SERVICE

Date of Service:.....

Next Service Due:.....

Signed:.....

Retailer's Stamp/Gas Safe Registration Number

Distributed by



The Fireplace

0800 843 347 | 0800 The Fire

www.thefireplace.co.nz

MANUFACTURED BY

Gazco Limited, Osprey Road, Sowton Industrial Estate, Exeter, Devon, England EX2 7JG

Technical Customer Services (01392) 261950 Fax: (01392) 261951

E-mail: technicalservices@gazco.com

A member of the Stovax Group
Translated from English Issue 2



PR1766NZ