

Verve & Verve XS Frames

For use with the Riva2 500, 530 & 670 and Riva2 670 Electric



Instructions for Use and Installation
For use in GB, IE (Great Britain and Republic of Ireland)

Installation Instructions

Covering frame model numbers:

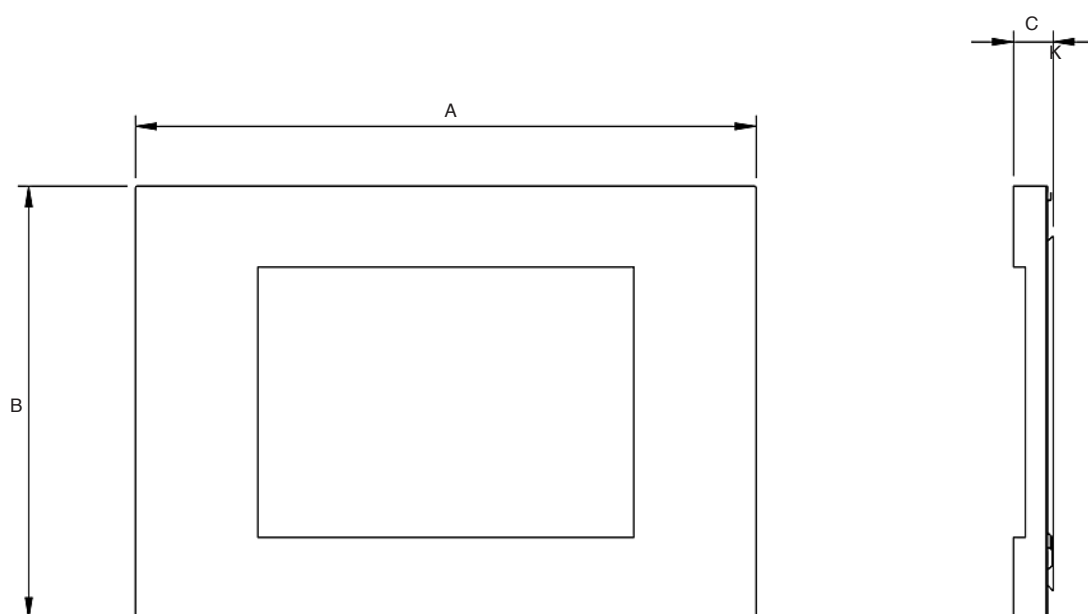
Verve Frame	
Riva2 530	Riva2 670
934-441	934-156

Verve XS		
Colour	Riva2 670	Riva2 500
Graphite	934-143	934-721
Metallic Blue	934-143BL	934-721BL
Metallic Red	934-143RD	934-721RD
Metallic Bronze	934-143BZ	934-721BZ
Ivory	934-143IV	934-721IV

1. General

1.1 These instructions are supplementary to, and must be read in conjunction with, the instructions supplied with the appliance. Read both thoroughly before installation.

1.2 Fitting of this decorative front should be carried out after the appliance has been installed and commissioning tests completed.



All dimensions in mm

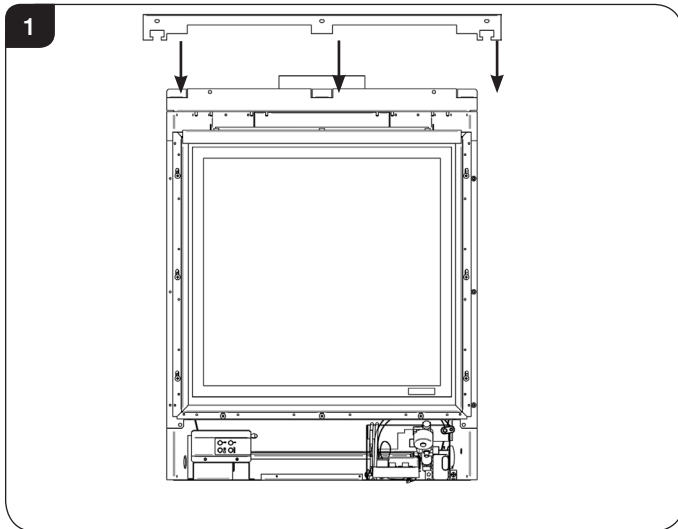
Verve Frame			
Model	A	B	C
Riva2 530	690	835	59
Riva2 670	1325	621	57

Verve XS Frame			
Model	A	B	C
Riva2 670	1000	621	56
Riva2 500	890	621	57

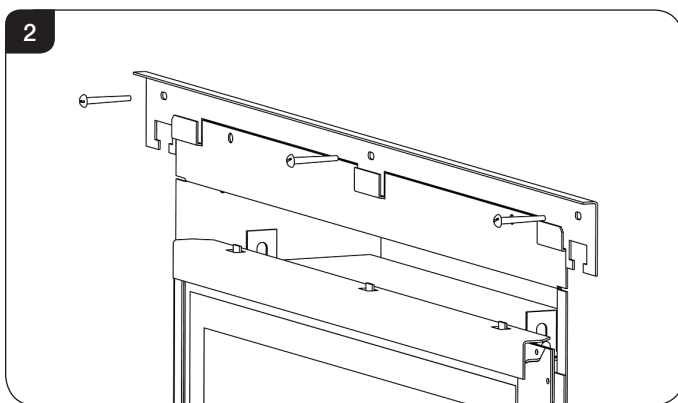
Riva2 530 & 670

2. Fitting the Sub-Frame

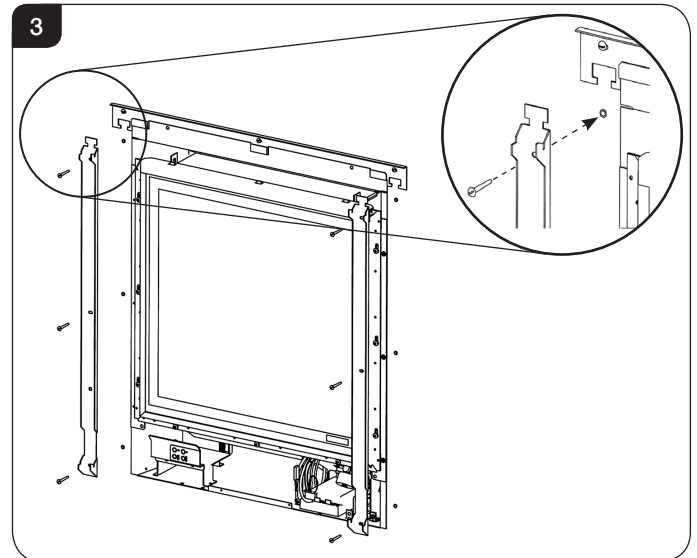
- 2.1 Complete the installation of the Riva2 530 or 670 by following the installation instructions supplied with the appliance.
- 2.2 Locate the wall mounting bracket so that the tabs locate in the lugs on the top flange and the bracket rests against the top edge of the top flange. Ensure the bracket is resting centrally and mark the location of the fixing holes (see Diagram 1).



- 2.3 Remove the mounting bracket and drill the fixing holes (making sure the debris does not fall into the firebox). Push the wall plugs into the holes, securing the bracket to the wall with the screws supplied (see Diagram 2).

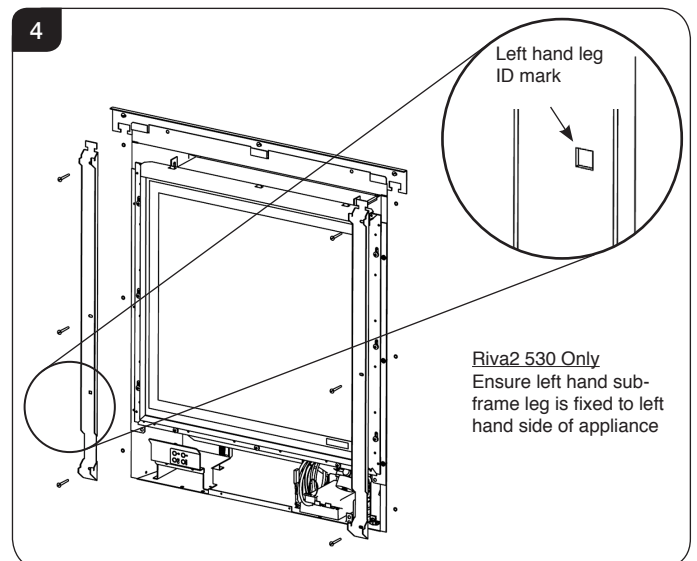


- 2.4 Position the left hand leg so that it interlocks with the T-shaped cutout in the upper wall mounting bracket (see Diagram 3).



IMPORTANT NOTE:

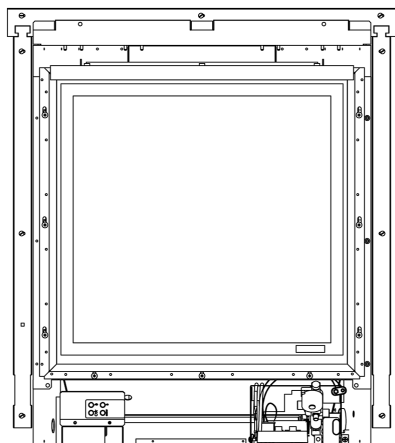
When installing the **Riva2 530** it is essential that the left and right hand legs are positioned to the correct side of the appliance. The left hand leg has a square cutout identification mark to differentiate it (see Diagram 4).



- 2.5 Ensure the leg is square to the appliance and mark the fixing holes. Remove leg, drill holes and insert wall plugs. Replace leg and fixing screws to secure.
- 2.6 Repeat this process for the right hand leg to complete the sub-frame installation (see Diagram 5).

Installation Instructions

5

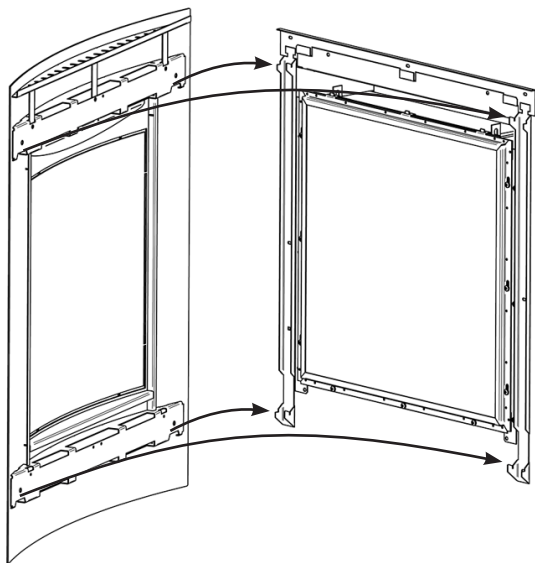


3. Securing Frame to the Appliance

IT IS RECOMMENDED THAT 2 PEOPLE FIT THIS FRAME FOR EASE OF INSTALLATION, PARTICULARLY LIFTING TO FINAL POSITION.

- 3.1 Rest the bottom fixing slots on the bottom locating hooks. Lift the upper frame fixing slots onto the top locating hooks and lower into final position (see Diagram 6)

6



4. Cleaning the Frame

Ensure the appliance is cold before attempting to clean the frame.

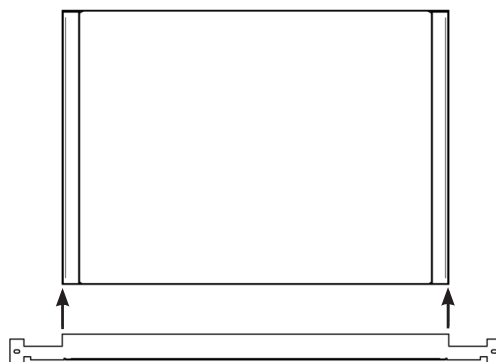
- 4.1 The painted finish should be cleaned using a damp cloth and buffed with a lint free duster.

Riva2 500

5. Fitting the Sub-Frame

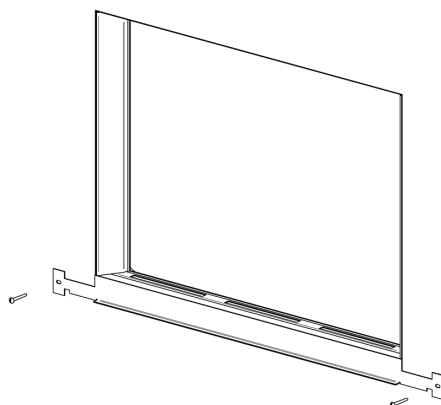
- 5.1 Complete the installation of the Riva2 500 by following the installation instructions supplied with the appliance.
- 5.2 Locate the wall mounting bracket by aligning the top of the bracket with the bottom edge of the appliance. Ensure the bracket is central and that the side edges are aligned. Mark the location of the fixing holes (see Diagram 7).

7



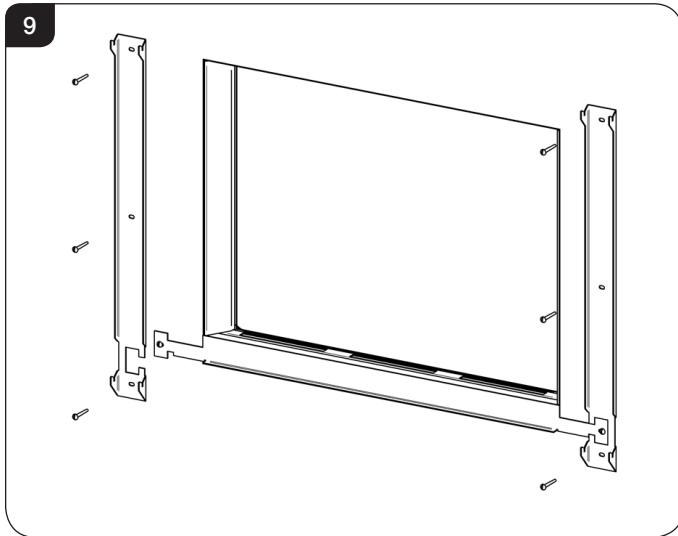
- 5.3 Remove the mounting bracket and drill the fixing holes (making sure the debris does not fall into the firebox). Push the wall plugs into the holes, securing the bracket to the wall with the screws supplied (see Diagram 8).

8

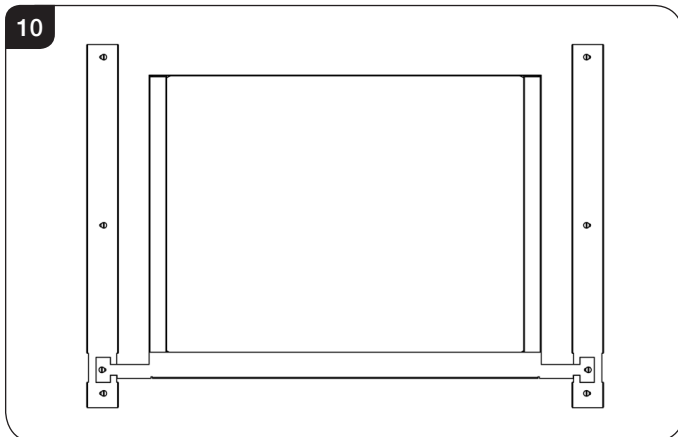


Installation Instructions

- 5.4 Position the right hand leg so that it interlocks with the T-shaped cutout in the wall mounting bracket (see Diagram 9).



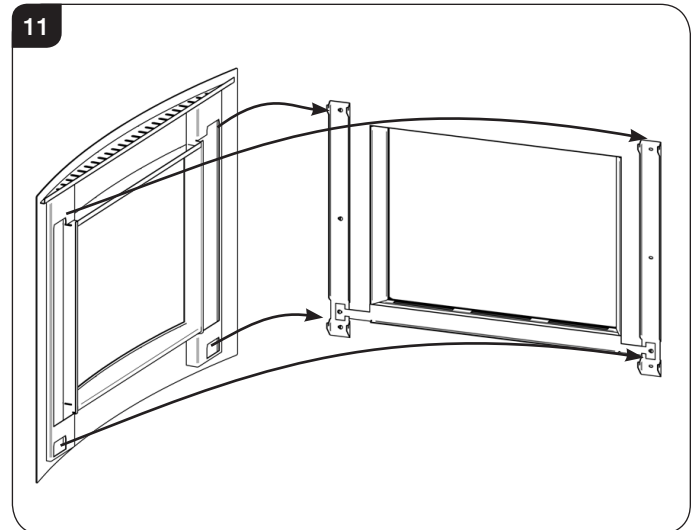
- 5.5 Ensure the leg is square to the appliance and mark the fixing holes. Remove leg, drill holes and insert wall plugs. Replace leg and fixing screws to secure, see Diagram 9.
- 5.6 Repeat this process for the left hand leg to complete the sub-frame installation (see Diagram 10).



6. Securing Frame to the Appliance

IT IS RECOMMENDED THAT 2 PEOPLE FIT THIS FRAME FOR EASE OF INSTALLATION, PARTICULARLY LIFTING TO FINAL POSITION.

- 6.1 Rest the bottom fixing slots on the bottom locating hooks. Lift the upper frame fixing slots onto the top locating hooks and lower into final position (see Diagram 11)



7. Cleaning the Frame

Ensure the appliance is cold before attempting to clean the frame.

- 7.1 The painted finish should be cleaned using a damp cloth and buffed with a lint free duster.

Distributed by



The Fireplace

0800 843 347 | 0800 The Fire

www.thefireplace.co.nz

Gazco Limited, Osprey Road, Sowton Industrial Estate, Exeter, Devon, England EX2 7JG

Technical Customer Services (01392) 261950 Fax: (01392) 261951

E-mail: technicalservices@gazco.com

A member of the Stovax Group